





ARTIST RENDERING FOR ILLUSTRATION PURPOSES ONLY

Contents:
Bosa Properties–09
Concept–15
Amenities–25
Residences–43
Central Park District–
53



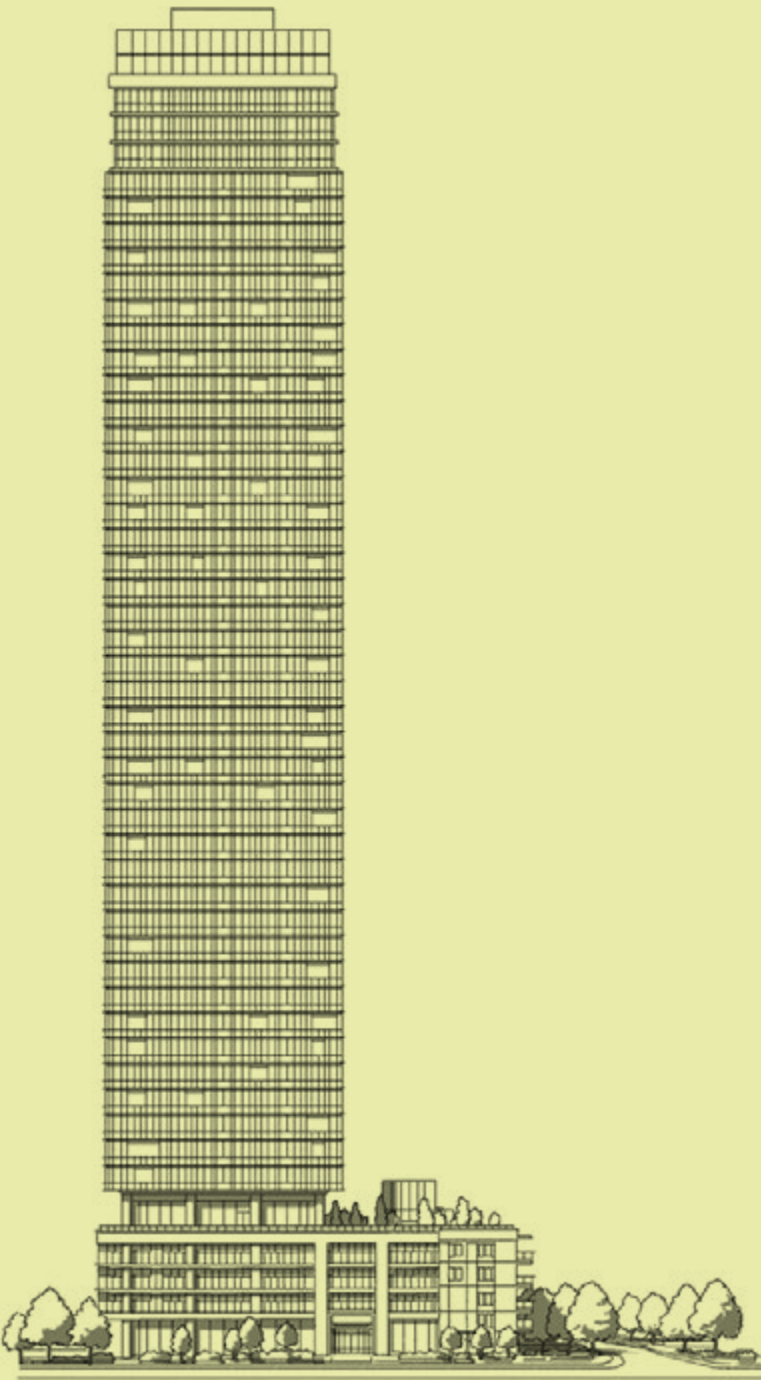
Designed to bring nature into your home, Solhouse brings together indoor and outdoor living, offering a retreat from modern life.

We are proud to bring this collection of homes to Metrotown. As our third project in this neighbourhood, we know this pocket of Burnaby is truly special. The breathtaking views, access to nature, and central location within a thriving urban community make it a remarkable place to call home.

Solhouse has been envisioned in partnership with Gensler, a renowned architecture firm that shares our passion for creating human-centred spaces that inspire better living. Together, we have created a unique offering that reflects our shared commitment to craftsmanship and detailed design.

We are delighted by your interest in Solhouse—we trust you'll feel right at home.

Colin Bosa
CEO, Bosa Properties



ARTIST RENDERING FOR ILLUSTRATION PURPOSES ONLY.



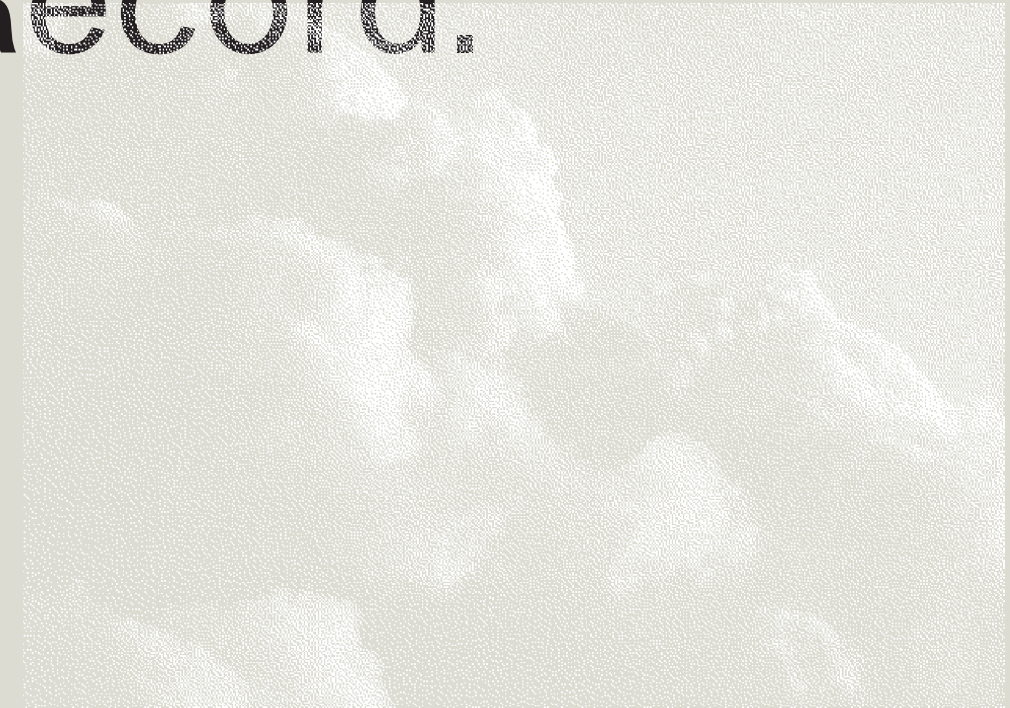
4 Looking across the city to the rugged beauty of British Columbia's wilderness.



ARTIST RENDERING FOR ILLUSTRATION PURPOSES ONLY.



Bosa Properties: Who We Are, History, Values, Track Record.



Bosa Properties crafts human-centred solutions for property development and management. Every day, our team of experts comes together to create extraordinary spaces where people can thrive.

Ours is a story of evolution. It all began when Robert Bosa, with his siblings and parents, left Italy and immigrated to Vancouver in the late 1950s—inspired by the belief that opportunity awaited them.

Through hard work and fair dealings, Robert Bosa became a symbol for excellence in construction—with a focus on delivering for people. Over the years, the company's reputation, commitment to quality, and relentless pursuit of progress enabled its growth into new divisions.

Today, we are an end-to-end real estate company working across residential, commercial, and master-planned projects. Our unwavering commitment to quality and integrity has cemented our reputation as a trusted partner, builder, and industry leader.



Bosa Properties' growing portfolio includes more than 20,000 homes that are built or in development. Each of these homes is thoughtfully designed to inspire better living. For over 35 years, we've put our homeowners and residents at the heart of every space we craft.

Jameson House

Designed by the Pritzker Prize-winning architecture firm Foster + Partners, Jameson House combines eight office levels and twenty-six storeys of condominium residences. The design for the thirty-seven storey tower, which cantilevers over two restored Art Deco buildings, incorporates numerous sustainable features, including natural ventilation, roof gardens irrigated by rainwater harvesting systems, chilled and heated apartment floors, and a mechanised valet parking system. Foster + Partners designed the residential interiors, which include Foster-designed kitchen and bathroom fittings.

LOCATION: Vancouver, BC



Cardero

Designed by the award-winning Vancouver-based architecture firm Henriquez Partners Architects, this unique building establishes a gateway into the downtown core. The slender twenty-six storey tower, located at the corner of West Georgia Street and Cardero Street, features distinctive origami-like screens inspired by its nautical surroundings.

LOCATION: Vancouver, BC



Central Park House

Envisioned with renowned architecture firm Gensler, this singular tower overlooking the vast beauty of Burnaby's Central Park will never be repeated. Located on a quiet tree-lined street, Central Park House will feature a double-height lobby and a cantilevered amenity pavilion offering residents an elevated oasis.

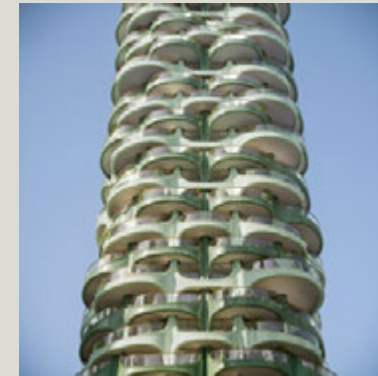
LOCATION: Burnaby, BC



1700 Alberni

Designed by Thomas Heatherwick and the visionaries at Heatherwick Studio, 1700 Alberni is built on a strong connection with nature and the landscape surrounding the two-tower residential development in Vancouver's Coal Harbour. 1700 Alberni will offer a truly indoor-outdoor lifestyle, with generous terraces and soaring views that stretch from Coal Harbour and the North Shore Mountains to English Bay and Vancouver Island.

LOCATION: Vancouver, BC



Fifteen Fifteen

Designed by the distinguished international architecture firm Büro Ole Scheeren, Fifteen Fifteen introduces horizontality to an urban tower with homes integrated into the extraordinary landscapes of one of the world's most livable cities. Strategically sited between Downtown Vancouver and Stanley Park, Fifteen Fifteen will occupy a prestigious location in Coal Harbour, Vancouver's most desirable waterfront neighbourhood, and command a distinctive presence on the Vancouver skyline. The forty-two storey tower introduces horizontality to vertical living with dramatic glass-enclosed cantilevers. Subtly elegant interiors emphasizing wood and other natural materials reinforce the connection between the residences and Vancouver's pristine environment.

LOCATION: Vancouver, BC



Concept:
Outside In, Gensler,
Architecture, Design
Ethos: Natural,
Crafted, Cultivated.



ARTIST RENDERING FOR ILLUSTRATION PURPOSES ONLY.

Solhouse brings to life a vision of home as a place of sanctuary and retreat, a place permeated by the calm of nature and enriched by the lively energy of the city.

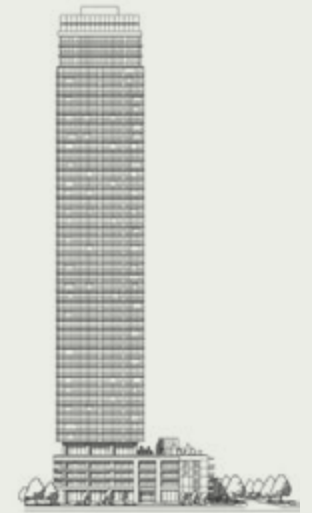


Situated in the heart of Metrotown, Solhouse will define the skyline and city living in Burnaby. Rising to a height of fifty storeys, this new residential building offers views of Central Park, Downtown Vancouver, and the North Shore Mountains. Designed by renowned global architecture firm Gensler, Solhouse marries metropolitan vibrancy with the serenity of the nearby forest and parklands in one truly remarkable building.

Drawing from an architectural philosophy that connects the outside world to the built experience, Solhouse is a unique project where nature, design, and the energy of the city come together. Taking cues from the beauty of the natural world, the residences of Solhouse embody a sense of calm and tranquility. Inside the light-filled homes, materials inspired by nature bring a sense of warmth and tactility while expansive windows provide sweeping views. Deep balconies extend the residential living spaces, and the outdoor amenity terrace with adjacent wellness circuit further emphasize the connection to well-being and proximity to nature. Here, sanctuary meets the convenience and energy of city living.

Every element of Solhouse has been meticulously designed to facilitate meaningful connections while enhancing daily life. Understanding that function should never forsake form, the human-centred approach to design manifests in ambient spaces that delight and inspire.

United by a desire to build a better world through architectural innovation, we—Bosa Properties—partnered with Gensler to bring Solhouse to life. Solhouse is emblematic of our unique approach to residential projects and illustrates our continued commitment to innovation and design excellence.



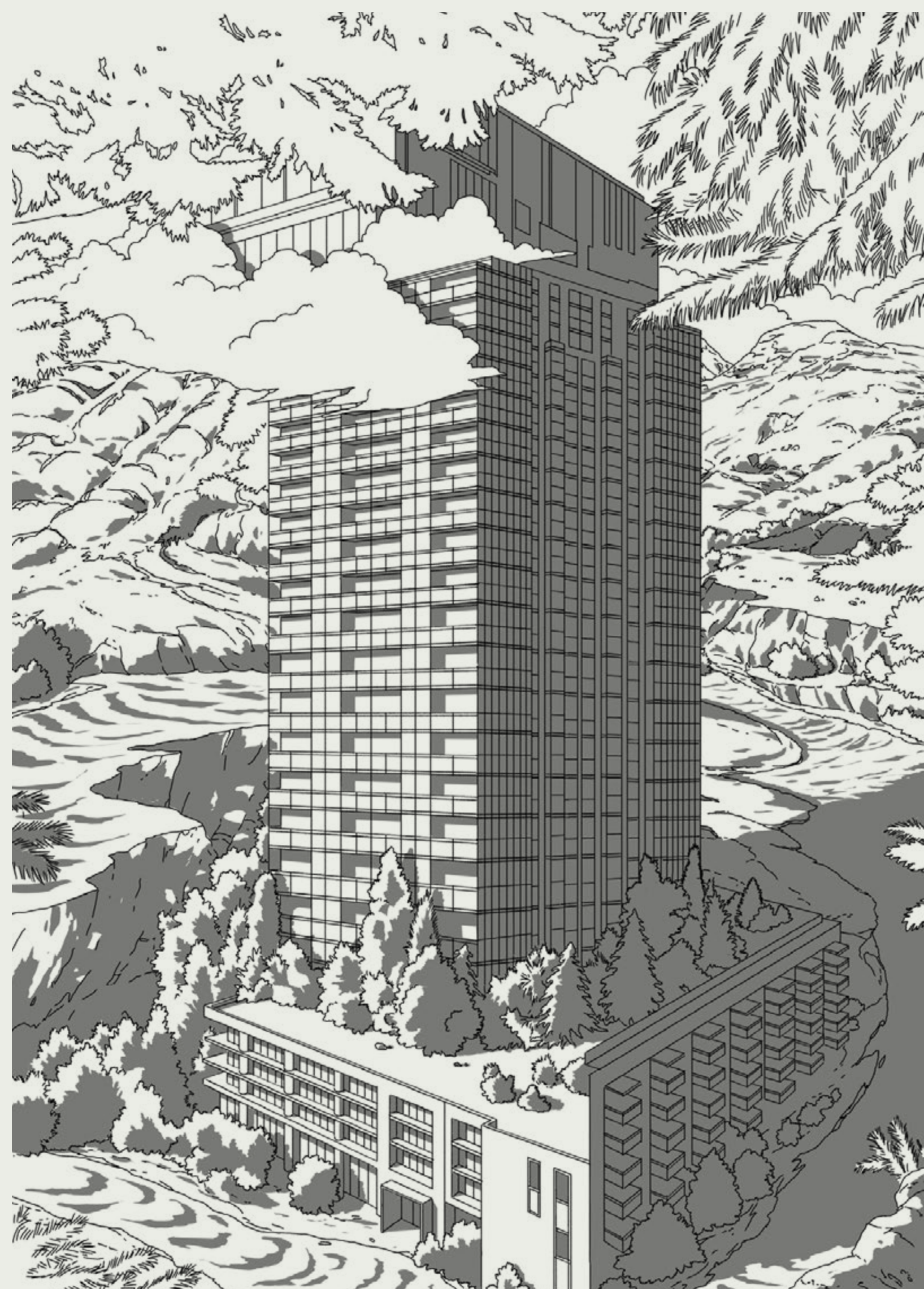
The Architects of Solhouse:
Gensler

Gensler is a global architecture, design, and planning firm with more than 7,000 professionals across the Americas, Europe, China, Asia Pacific, and the Middle East. Founded in 1965, the firm works globally across more than 29 practice areas spanning the work, lifestyle, community, and health sectors. As one of the world's largest and most renowned architecture firms, Gensler is guided by their desire to create a better world through the power of design.

Transformative, restorative,
contemplative. At Solhouse,
sophisticated residential
experiences meet the serenity
of nature.



Evolving the built experience, Solhouse draws the outdoors in. Reconnect to the natural world and discover a space of sanctuary in the heart of Metrotown.



↑ Kitchens in the Estate collection are completed with premium finishes and appliances.

ARTIST RENDITION FOR ILLUSTRATION PURPOSES ONLY.

Here, slow and inspired residences invite new ways to live in the city.

Conceived as a space of balance, Solhouse is an urban experience that provides an intentioned approach to living. Capturing the emotions, ideas, and energy of the city, it is both a place and a platform for a life with purpose.



- The relaxation lounge is an ideal setting to recharge.
- ↓ The indoor wellness studio is perfect for starting and ending a busy day.



With a thoughtful, purposeful, human-centred approach to design, Solhouse creates spaces that work and warm.

ARTIST RENDITION FOR ILLUSTRATION PURPOSES ONLY.



The city of Burnaby is surrounded by mountains, rivers, and vast stretches of wilderness; the centre of Metrotown is bustling and cosmopolitan. The architectural design of Solhouse merges the beauty of these two worlds to create remarkable residences for a new generation of slow and inspired living.

This meeting of the natural and built worlds draws inspiration from biophilic design: a new name for an ancient idea that has shaped how humans have designed their homes across the ages. The term refers to the replication of natural forms and sensations within built environments. At Solhouse, it has informed a design concept that combines the tranquility of the landscape with the amenities and high-end finishes befitting a coveted location.

To bring the outdoors in, the architects and designers of Solhouse paid great attention to site lines, using them to create focal points within rooms, frame views, and maximize natural light throughout the residences. The amenity level's expansive green outdoor terrace and the residential balconies that overlook Central Park, Downtown Vancouver, and the North Shore Mountains, further emphasize this connection to nature.

With a distinctive design philosophy that places human needs at its centre, the architects and designers have expertly balanced the aesthetic and functional elements of Solhouse, resulting in a residential experience that is inviting and warm. Solhouse has been carefully designed to elevate and enrich your daily life. It serves as both a physical place and a platform for the realization of your aspirations and desires.



Amenities: Self-Guided Wellness Circuit, Wellness Studio, Outdoor Terrace, Gathering and Co-Working Spaces.



Solhouse has curated a thoughtful range of amenities to elevate your every day. Indulge in relaxation and recovery in the heated and cold plunge pools, experience shower, steam room, and sauna. Embrace the quiet ambience of nature on the adjacent outdoor terrace or step into a new space of tranquility in the indoor relaxation room.

Spanning the sixth floor of Solhouse, the self-guided wellness circuit provides immersive experiences designed to enhance health and well-being. Here, invigoration and relaxation reign.

The hot and cold plunge pools offer experiences that benefit both body and mind. Designed for post-exercise immersion, the cold plunge pool helps decrease inflammation while improving sleep and mood and boosting injury recovery.

The carefully considered steam room and sauna lend themselves as much to healing and muscle recovery as they do to enjoyment and recalibration of the senses. Following the heat, enjoy the immersive and refreshing experience shower.

The self-guided wellness circuit is completed by indoor and outdoor relaxation areas designed to help you unwind. Finished with comfortably elegant furnishings, these areas speak to the restorative power of self-care and provide space for peaceful moments alone or shared with friends.

In addition to this exclusive suite of amenities, the sixth floor hosts a fully equipped gym and a wellness studio for yoga, meditation, and stretching. Here, residents can complete their health and wellness experience with a mindful workout.

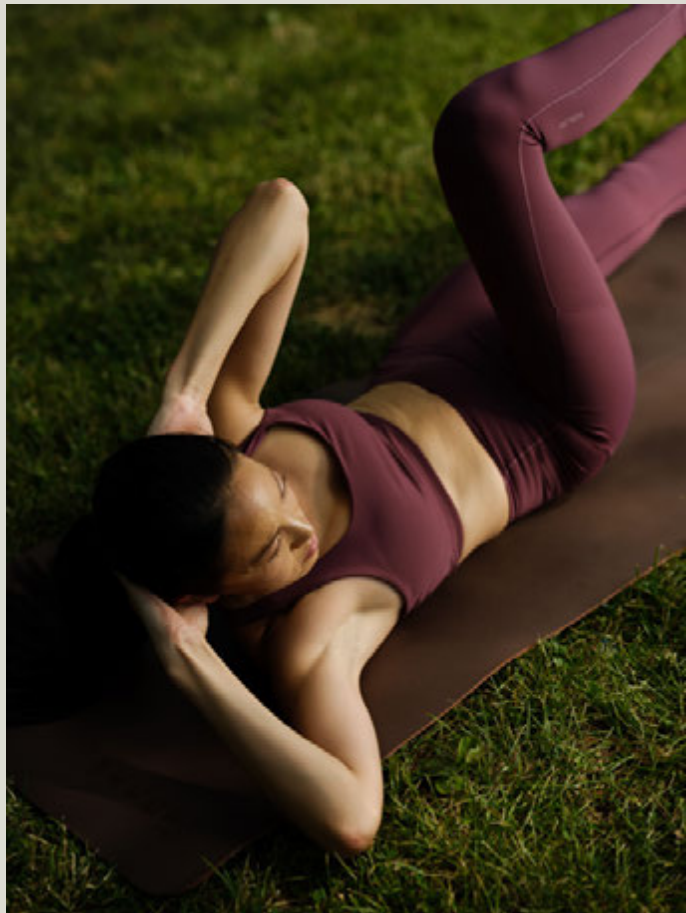


Self-Guided Wellness Circuit:
Hot and Cold Plunge Pools,
Relaxation Areas, Sauna, Steam
Room, Experience Shower.





↑ The sixth-floor amenity terrace provides an ideal space for immersive outdoor living.



Designed to reflect the dynamic nature of the city below whilst echoing the unrivaled natural beauty of the surrounding parklands, Solhouse's amenity terrace is a space for entertaining and unwinding. Here, considered landscaping creates spaces of serenity that reflect the park's rich botanical life and tranquil atmosphere. Breathe deeply and relax in the lounge areas, where comfortable seating arrangements invite conversation amongst friends and neighbours. As the sun sets, the terrace transforms into an ambient space for gatherings. Backdropped by the city's glittering skyline, the dining area and open-air fire pit are the perfect setting for social events.

ARTIST RENDITION FOR ILLUSTRATION PURPOSES ONLY.









36 Looking across Metrotown and into the landscape beyond.





ARTIST RENDITION FOR ILLUSTRATION PURPOSES ONLY.



The first-floor lobby is home to a range of spaces designed to make your daily life easy and enjoyable. Alongside a co-working space with hot desks and individual working spaces, the lobby also houses a social lounge for relaxing and mingling and a private dining area for gatherings and entertaining.



Residences: Sanctuary, Design Ethos, Outside In, Balconies, Light, Natural Interiors.



ARTIST RENDITION FOR ILLUSTRATION PURPOSES ONLY.



Where elegant design and natural harmonies inspire new ways of living. Solhouse offers a variety of floorplans including studios, one-, two-, and three-bedroom homes, and the Estate and Penthouse collections.



ARTIST RENDERING FOR ILLUSTRATION PURPOSES ONLY.

RESIDENCES:

The robust residence offering on levels 7-47 includes studios, one-, two-, and three-bedroom homes.

ESTATE HOMES:

Offered on levels 48 and 49, this exclusive collection of homes rises into Metrotown's skyline, boasting expansive living spaces and elevated finishes.

PENTHOUSES:

The Penthouse collection sits atop the exclusive 50th floor of Solhouse. Expansive views of British Columbia match the generous balconies and dramatic interiors.



Above the streets of Metrotown, a vertical streetscape emerges. Across the fifty storeys of Solhouse, balconies extend the interior living space and serve as a conduit to the natural beauty that so characterizes this part of British Columbia. Retractable glass panels transform the balconies into versatile living spaces that can be enjoyed all year round. These panels provide protection during the colder seasons, allowing the balconies to be opened up or closed off from the external elements—all without obstructing the views. Defined by their dynamic design, these sizable balconies transcend conventional purpose to become vibrant living spaces.



ARTIST RENDITION FOR ILLUSTRATION PURPOSES ONLY.

Across the fifty storeys of Solhouse, generous balconies with retractable glass panels extend the interior living space and connect residents to the natural landscape of British Columbia.



Floor-to-ceiling windows frame far-reaching views of Burnaby's Central Park, Downtown Vancouver, and the North Shore Mountains.

Rising above the centre of Metrotown, Solhouse provides a tailored expression of sanctuary in the heart of the city. The residences have been designed to offer respite and retreat from the energy of the streets below while embracing natural elements that define the wilderness of the area.



↑ Living areas blend seamlessly in the open-concept interiors of Solhouse residences.

Interiors are crafted to harmonize with the outside world. Materials inspired by nature capture the feeling of wood and stone, bringing the outside in.



ARTIST RENDITION FOR ILLUSTRATION PURPOSES ONLY.



Every interior element has been thoughtfully considered: materials inspired by nature and high-end finishes come together to create harmonious spaces that inspire a sense of serenity.

At Solhouse, cooking becomes both a ritual and a retreat in kitchens finished with premium appliances. In the luxurious bathrooms, luminous contemporary vanity units signal a new age in self-care.





Central Park District: Parks and Nature, Activities, Dining and Culture, Transportation.

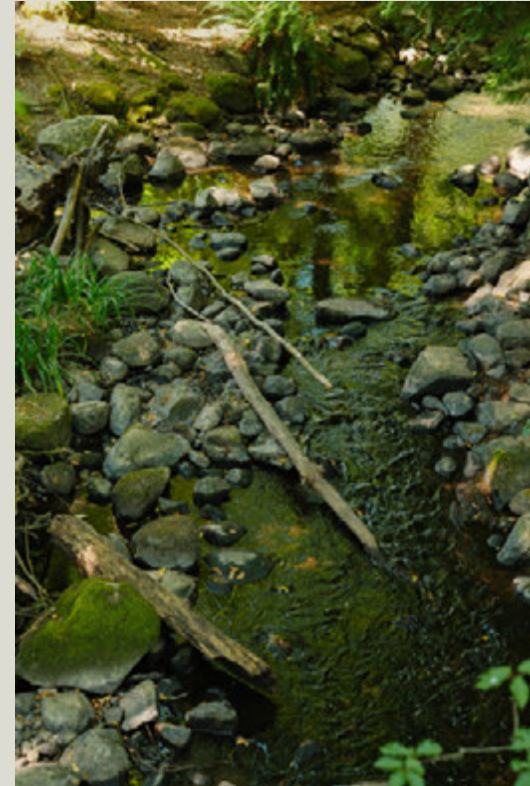


High-performance materials, premium appliances, and full-height cabinets elevate cooking to a ritual and retreat. Spacious kitchens with ample counter space and storage make culinary adventures a joy.



ARCHITECTURE FOR BUSINESS PURPOSES ONLY

Immerse yourself in the green expanse of Metrotown's many parks and gardens, just minutes from your door.



A short stroll from Solhouse lies Central Park, the green heart of Metrotown. The park consists of swathes of temperate rainforest, quiet gardens, and meadow-like grass clearings. Today, beneath the towering Douglas fir, cedar, and maple, you'll find spaces for sport and recreation, and the occasional inquisitive animal—amongst them, woodpeckers, sparrows, and squirrels.

Central Park's 86 hectares are filled with a suitably wide range of amenities. Whether it's tennis or pitch and putt, birdwatching or picnicking, reading a book or lawn bowling, the park hosts a range of spaces and annual events designed to meet your outdoor needs.

The park boasts several trails that are favoured by cyclists and runners alike. In addition, the park houses a volleyball court, 16 horseshoe pitches, 12 outdoor tennis courts, and Swangard Stadium, one of BC's premier athletic facilities.

The upcoming BC Parkway Enhancement Project will extend the beauty of Central Park and bring its vibrancy even closer to Solhouse. This City Council initiative will transform the parkway into a linear park where nature, recreation, arts, commerce, and culture combine.

With abundant green spaces and wilderness areas, Burnaby is defined equally by its natural beauty and its metropolitan feel. With Central Park, Kinnee Park, and Maywood Park all just minutes away from Solhouse on foot, and David Gray Park and Deer Lake Park a short drive or cycle, residents have the best of both worlds at their fingertips.



Burnaby's vibrant Central Park District is where the city's future unfolds. Positioned to embrace a significant share of the city's anticipated growth, this thriving neighbourhood is a hub of activity and opportunity.

Discover retailers, restaurants and cafes, grocery stores, schools, and universities. With extensive parklands and reserves, the natural world can be found around almost every corner. Well connected to Downtown Vancouver by public transport and car, and with striking views over the city towards the North Shore Mountains, Metrotown is a picturesque location where you'll find everything you need in close proximity.

In Metrotown, discover a range of dining options where the lively atmosphere extends beyond business hours. Retail offerings in the neighbourhood are similarly abundant. One of Burnaby's most iconic landmarks, Metropolis at Metrotown, is just minutes from Solhouse. The largest shopping centre in British Columbia, it houses 330+ fashion retailers, services, and eateries. Amongst them, Lululemon, Arc'teryx, Kiehl's, Muji, and T&T Supermarket. Metrotown is also home to Crystal Mall, which houses a food court, public market, and various stores.

The area is also home to the Burnaby Public Library, elementary schools, and nearby SFU and BCIT campuses. Neighbouring secondary schools are easily accessible by both public transport and car.

Metrotown is a central transit hub with access to Burnaby's best transport offerings. With the SkyTrain from Patterson, you can be in Downtown Vancouver in just 18 minutes. Hop on any of the bus routes to travel to SFU, BCIT, parks, schools, and more. For cyclists, the extensive BC Parkway passes directly by Solhouse; and for drivers, BC Highway 1 is in close proximity, making weekend getaways hassle-free.



↑ Discover the fresh food offerings at Crystal Mall.
← Patterson and Metrotown SkyTrain stations are a short walk from Solhouse.







62 Solhouse is a short walk from Patterson and Metrotown SkyTrain stations.



63 Discover a world of fresh produce and shopping at Crystal Mall.





ARTIST RENDITION FOR ILLUSTRATION PURPOSES ONLY.

solhouse@bosaproperties.com
solhouse6035.com

This is not an offering for sale. An offering for sale can only be made after filing a Disclosure Statement under the Real Estate Development Marketing Act (British Columbia). Renderings and illustrations contained herein have been prepared for and on behalf of the developer only and are not to be used, reproduced, copied, or distributed for any other purpose or project without first obtaining written permission from the developer. All statements in the developer's marketing materials are believed to be accurate and correct but are not to be regarded as warranties or assurances of any kind, express or implied, or representations of facts. While every reasonable care has been taken in preparing these materials, the developer, its subsidiaries, affiliates, and agents cannot be held responsible for any inaccuracies or artistic concepts which are subject to change. E. & O.E. For further clarity, to obtain further details, and/or to obtain a copy of the Disclosure Statement for the development, once filed, please contact the developer's agent/salesperson.



ARTIST RENDERING FOR ILLUSTRATION PURPOSES ONLY



ARTIST RENDITION FOR ILLUSTRATION PURPOSES ONLY.



