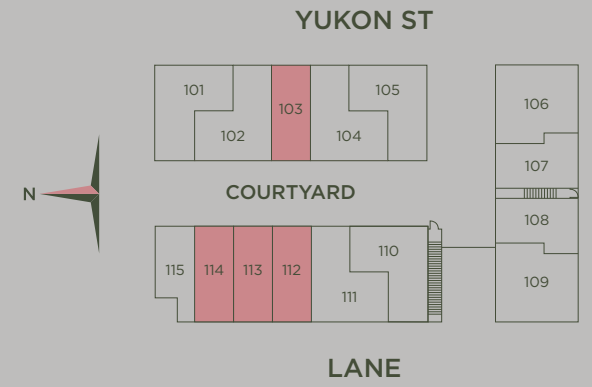
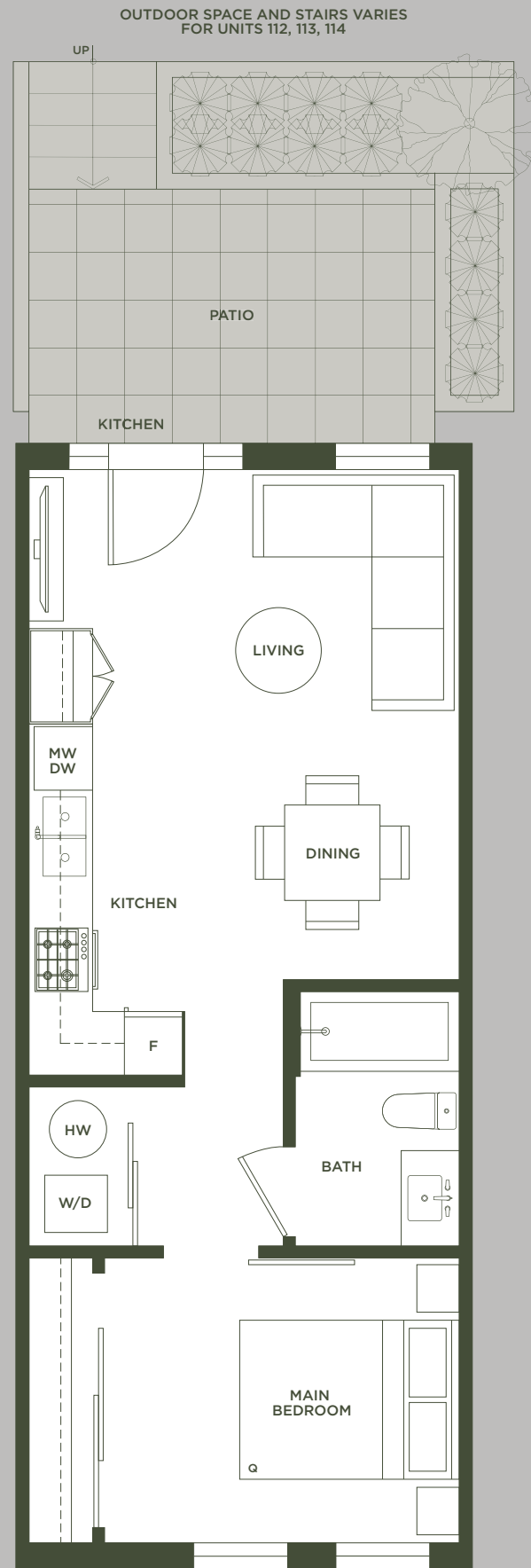


A2

GARDEN FLAT 1 BEDROOM | 1 BATHROOM

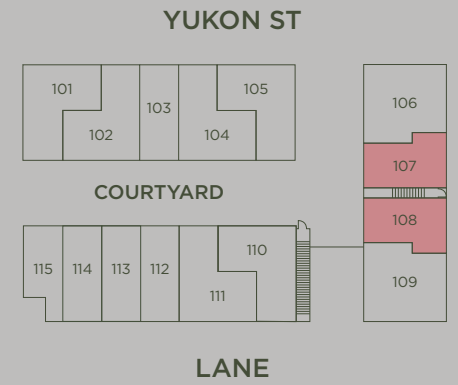
INTERIOR: 500 SQ FT
EXTERIOR: 90 - 100 SQ FT
TOTAL: 590 - 600 SQ FT



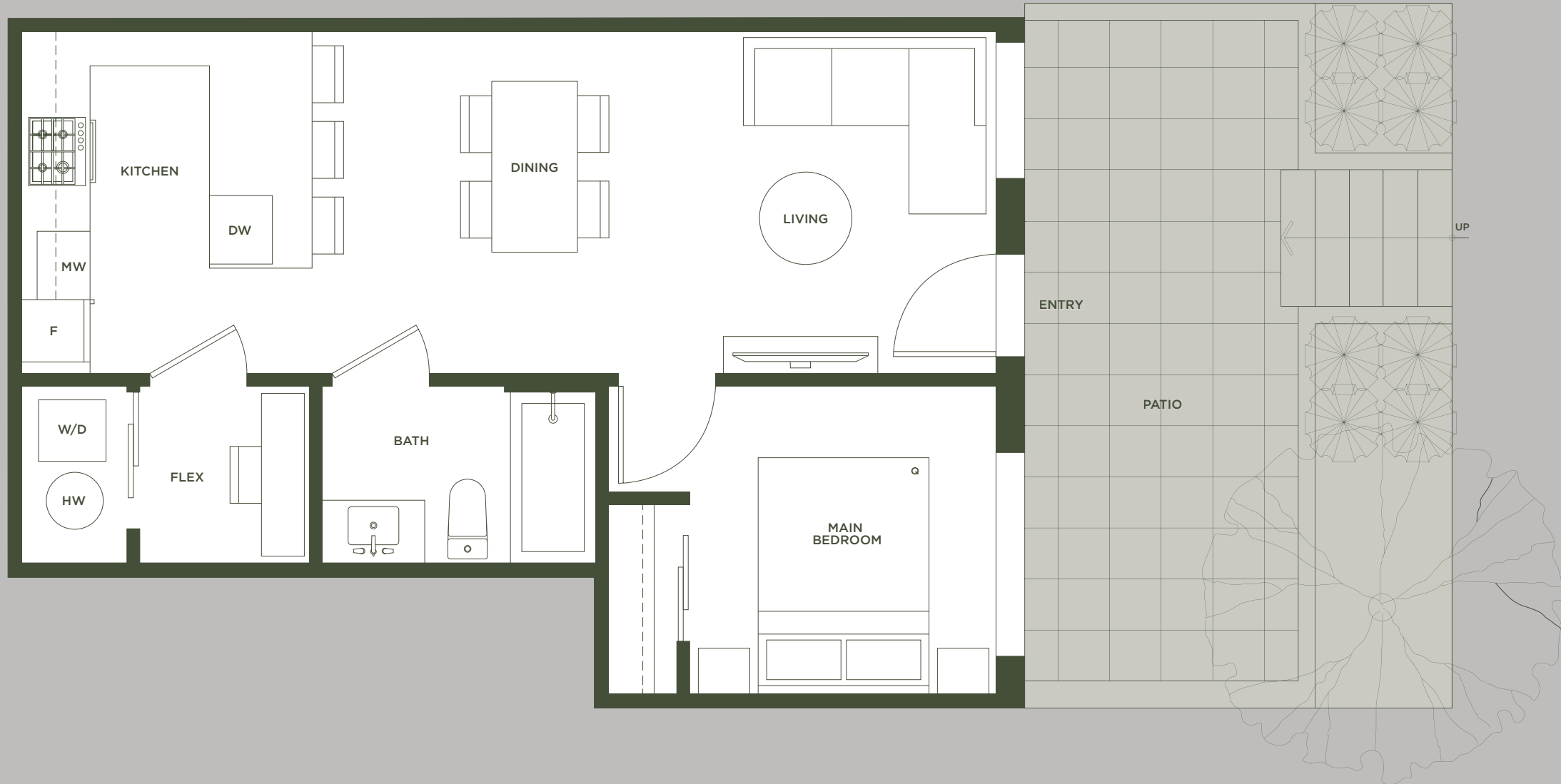
A3

GARDEN FLAT 1 BEDROOM + FLEX | 1 BATHROOM

INTERIOR: 540 SQ FT
EXTERIOR: 140 SQ FT
TOTAL: 680 SQ FT



FLOORPLANS | GARDEN FLAT

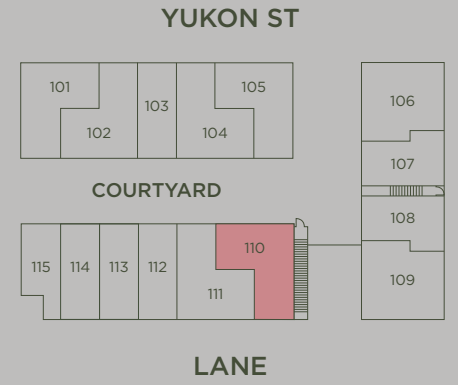
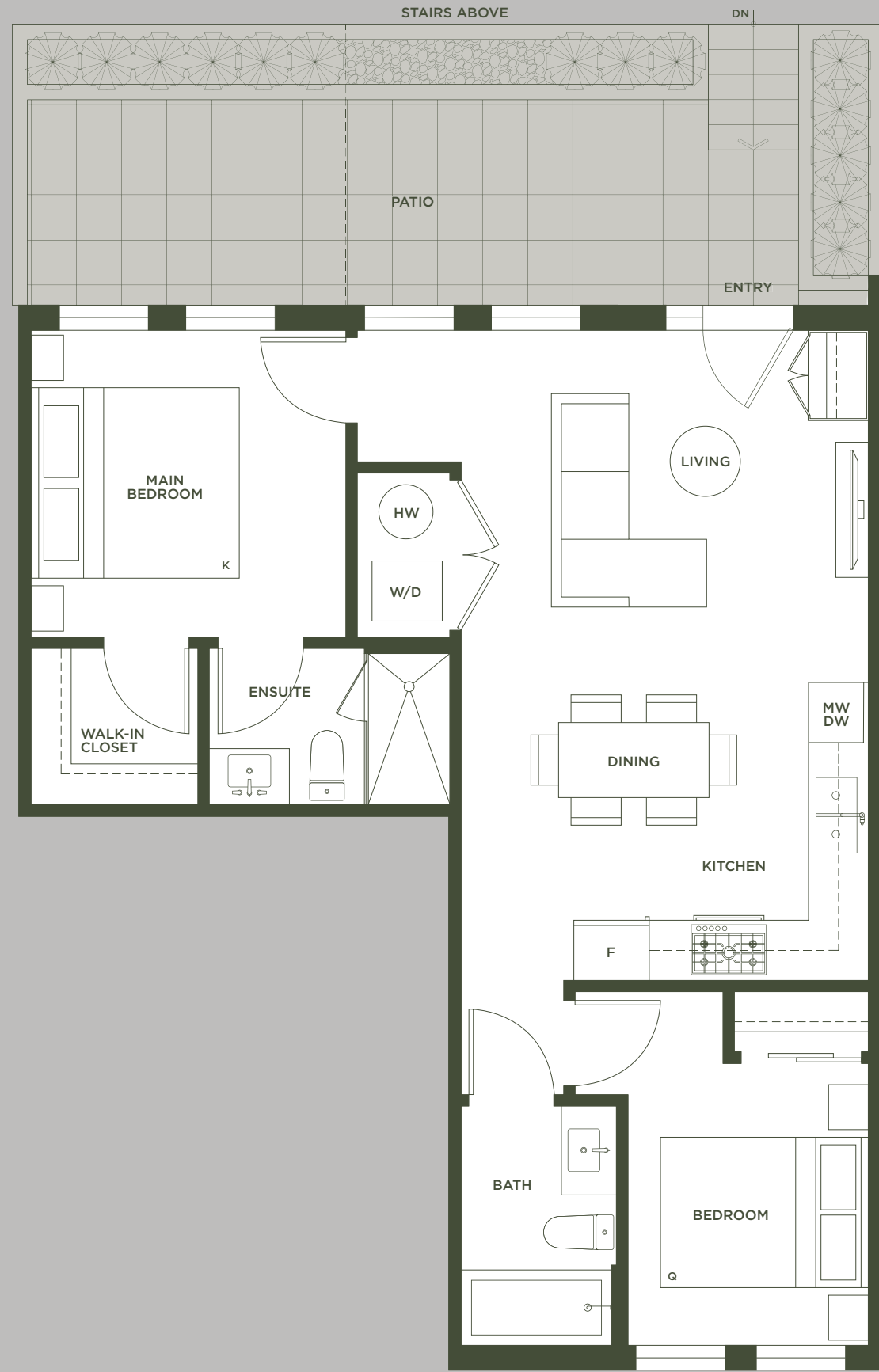


DRAFT

B1

GARDEN FLAT 2 BEDROOM | 2.5 BATHROOM

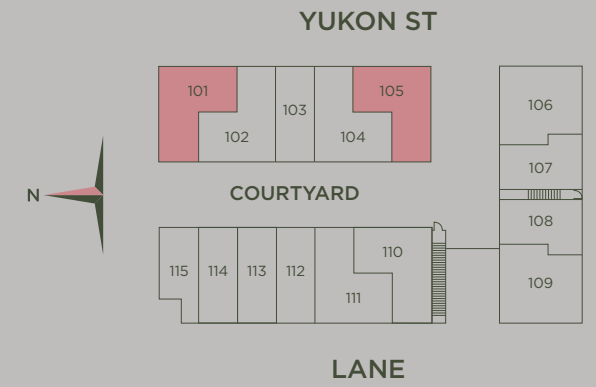
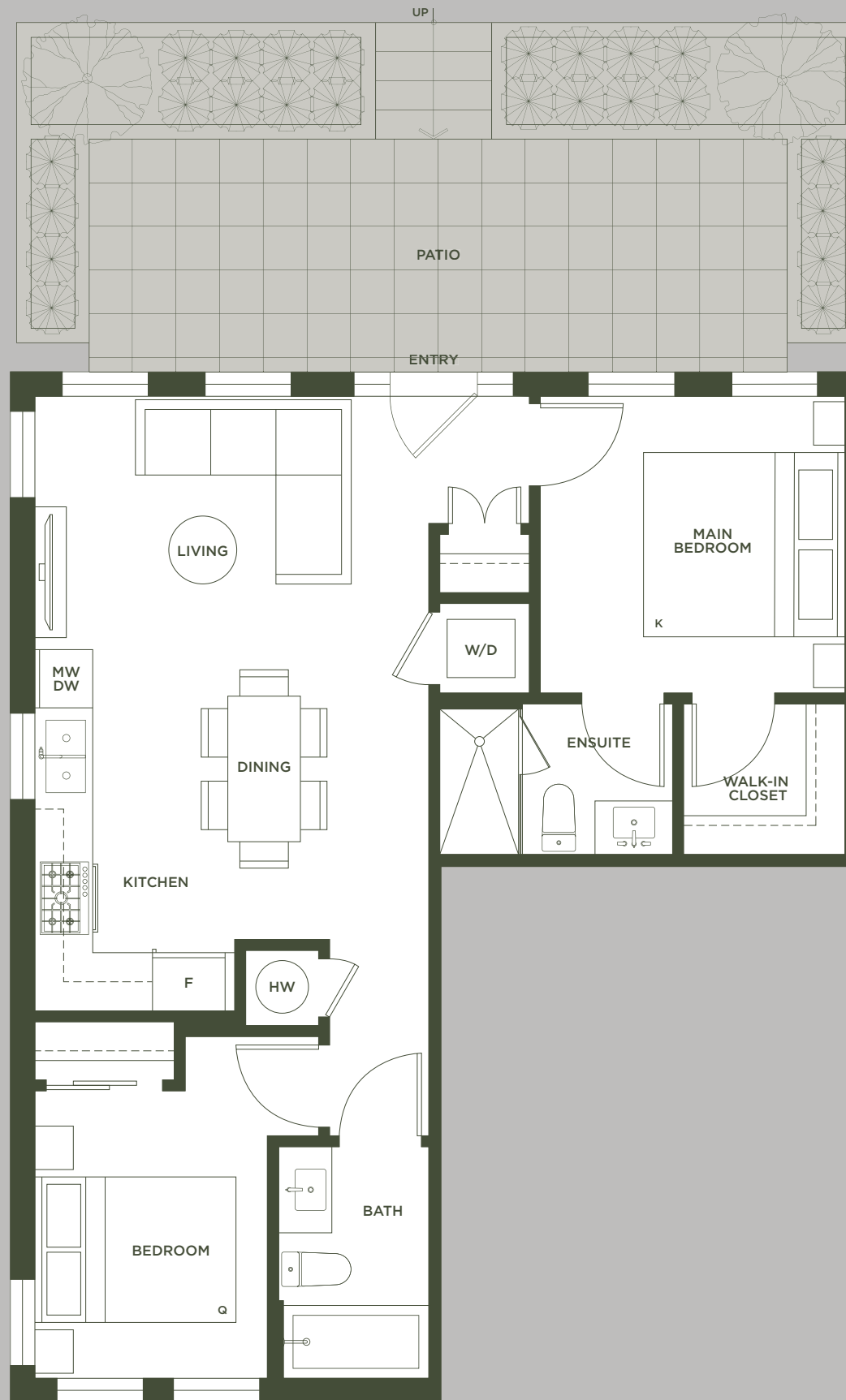
INTERIOR: 750 SQ FT
EXTERIOR: 170 SQ FT
TOTAL: 920 SQ FT



B2

GARDEN FLAT 2 BEDROOM | 2.5 BATHROOM

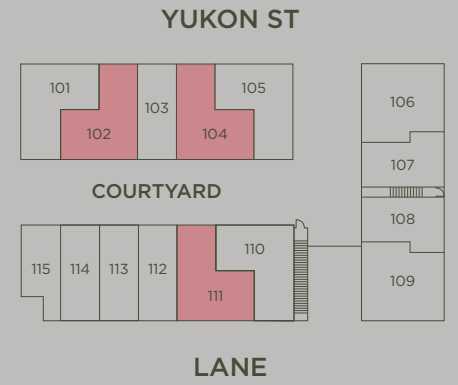
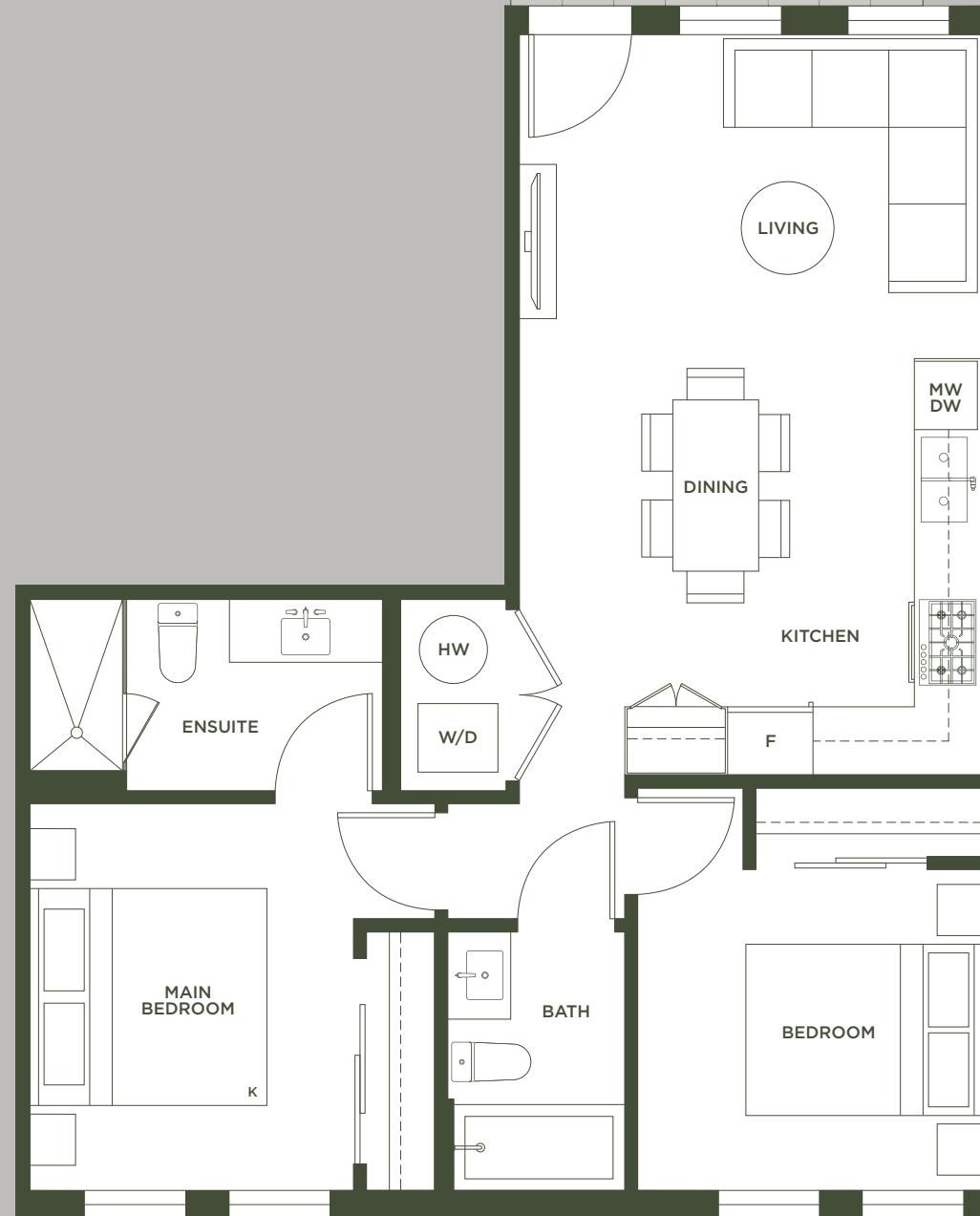
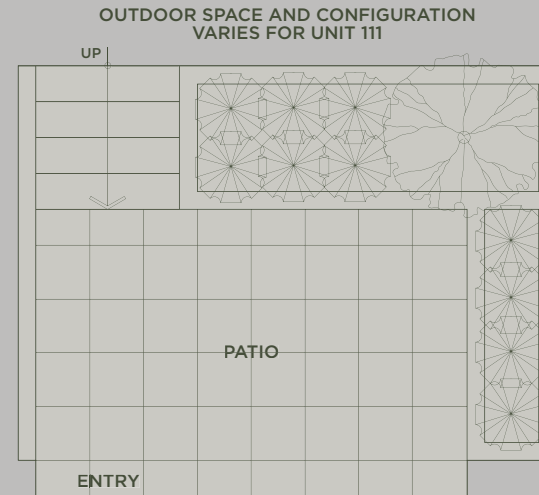
INTERIOR: 750 SQ FT
EXTERIOR: 190 - 200 SQ FT
TOTAL: 940 - 950 SQ FT



B3

GARDEN FLAT
2 BEDROOM | 2 BATHROOM

INTERIOR: 760 SQ FT
EXTERIOR: 85 - 100 SQ FT
TOTAL: 845 - 860 SQ FT



B4

GARDEN FLAT 2 BEDROOM + FLEX | 2 BATHROOM

INTERIOR: 815 SQ FT
EXTERIOR: 140 - 155 SQ FT
TOTAL: 955 - 970 SQ FT

