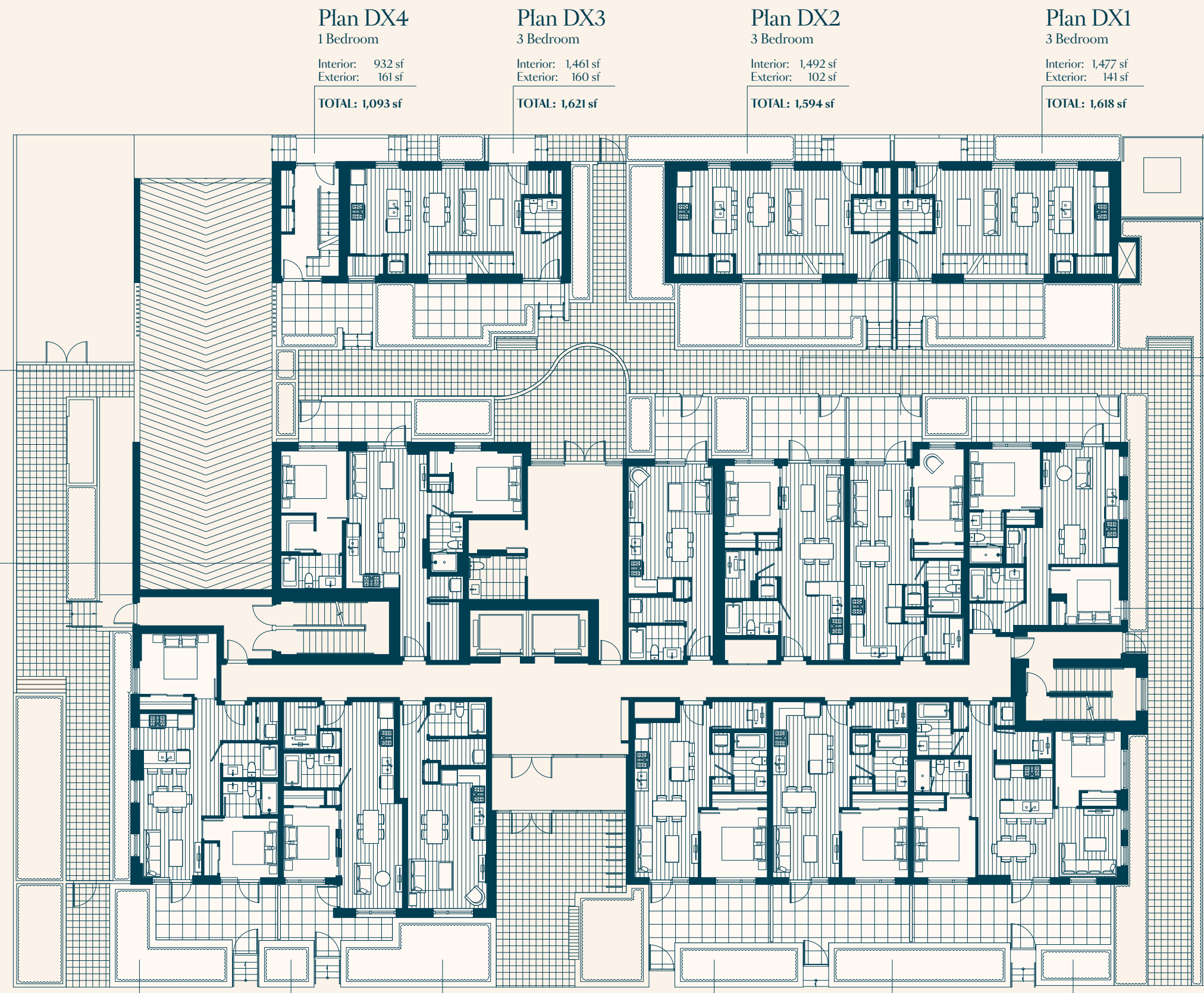




PARK
LANGARA
CAMBIE



Plan DX4
1 Bedroom
Interior: 932 sf
Exterior: 161 sf
TOTAL: 1,093 sf

Plan DX3
3 Bedroom
Interior: 1,461 sf
Exterior: 160 sf
TOTAL: 1,621 sf

Plan DX2
3 Bedroom
Interior: 1,492 sf
Exterior: 102 sf
TOTAL: 1,594 sf

Plan DX1
3 Bedroom
Interior: 1,477 sf
Exterior: 141 sf
TOTAL: 1,618 sf

106
Plan A1
Studio
Interior: 437 sf
Exterior: 77 sf
TOTAL: 514 sf

104
Plan C7
2 Bedroom + Den
Interior: 833 sf
Exterior: 111 sf
TOTAL: 944 sf

107
Plan B7
1 Bedroom + Den
Interior: 553 - 583 sf
Exterior: 55 - 129 sf
TOTAL: 608 - 712 sf

108
Plan B8
1 Bedroom + Den
Interior: 565 - 567 sf
Exterior: 58 - 98 sf
TOTAL: 623 - 665 sf

109
Plan C2
2 Bedroom
Interior: 676 sf
Exterior: 148 sf
TOTAL: 824 sf

103
Plan C5
2 Bedroom
Interior: 722 - 745 sf
Exterior: 131 - 167 sf
TOTAL: 853 - 912 sf

102
Plan B3
1 Bedroom + Den
Interior: 544 sf
Exterior: 47 - 111 sf
TOTAL: 591 - 655 sf

101
Plan A2
Studio
Interior: 428 - 438 sf
TOTAL: 428 - 438 sf

112
Plan B1a
1 Bedroom + Den
Interior: 552 - 561 sf
Exterior: 93 - 163 sf
TOTAL: 645 - 724 sf

111
Plan B1
1 Bedroom + Den
Interior: 587 sf
Exterior: 94 - 190 sf
TOTAL: 681 - 777 sf

110
Plan C1
2 Bedroom + Den
Interior: 812 sf
Exterior: 147 - 268 sf
TOTAL: 959 - 1,080 sf

Level 1
N

The developer reserves the right to substitute any material, fixture, appliance or finishing with an equivalent material, fixture, appliance or finishing at the developer's sole discretion. In our continuing effort to meet the challenge of product improvement, we reserve the right to modify or change plans, specifications, or prices without notice. Renderings are an artist's conception only and are intended as a general reference. All dimensions and sizes are approximate. As reverse plans occur throughout the project, please check architectural plans. Refer to disclosure statement for specific offering details. E. & O.E.

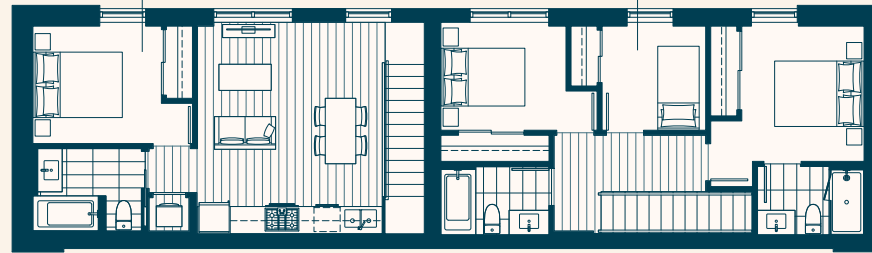


PARK
LANGARA
CAMBIE

Plan DX4
1 Bedroom

Interior: 932 sf
Exterior: 161 sf

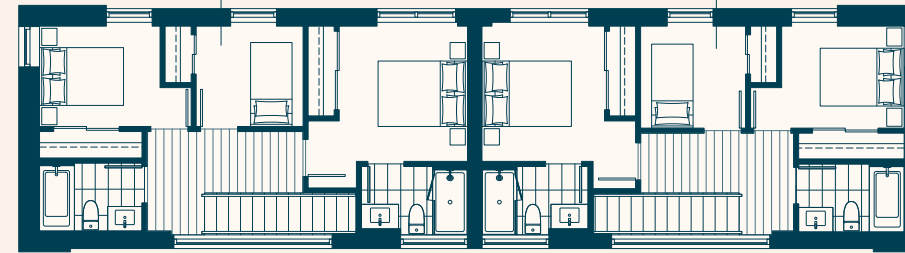
TOTAL: 1,093 sf



Plan DX3
3 Bedroom

Interior: 1,461 sf
Exterior: 160 sf

TOTAL: 1,621 sf



Plan DX2
3 Bedroom

Interior: 1,492 sf
Exterior: 102 sf

TOTAL: 1,594 sf

Plan DX1
3 Bedroom

Interior: 1,477 sf
Exterior: 141 sf

TOTAL: 1,618 sf

212
Plan C4
2 Bedroom

Interior: 767 sf
Exterior: 116 - 117 sf

TOTAL: 883 - 884 sf

213
Plan B2
1 Bedroom + Den

Interior: 531 sf
Exterior: 51 sf

TOTAL: 582 sf

201
Plan C6
2 Bedroom + Den

Interior: 915 sf
Exterior: 122 sf

TOTAL: 1,037 sf

202
Plan B7
1 Bedroom + Den

Interior: 553 - 583 sf
Exterior: 55 - 129 sf

TOTAL: 608 - 712 sf

203
Plan B8
1 Bedroom + Den

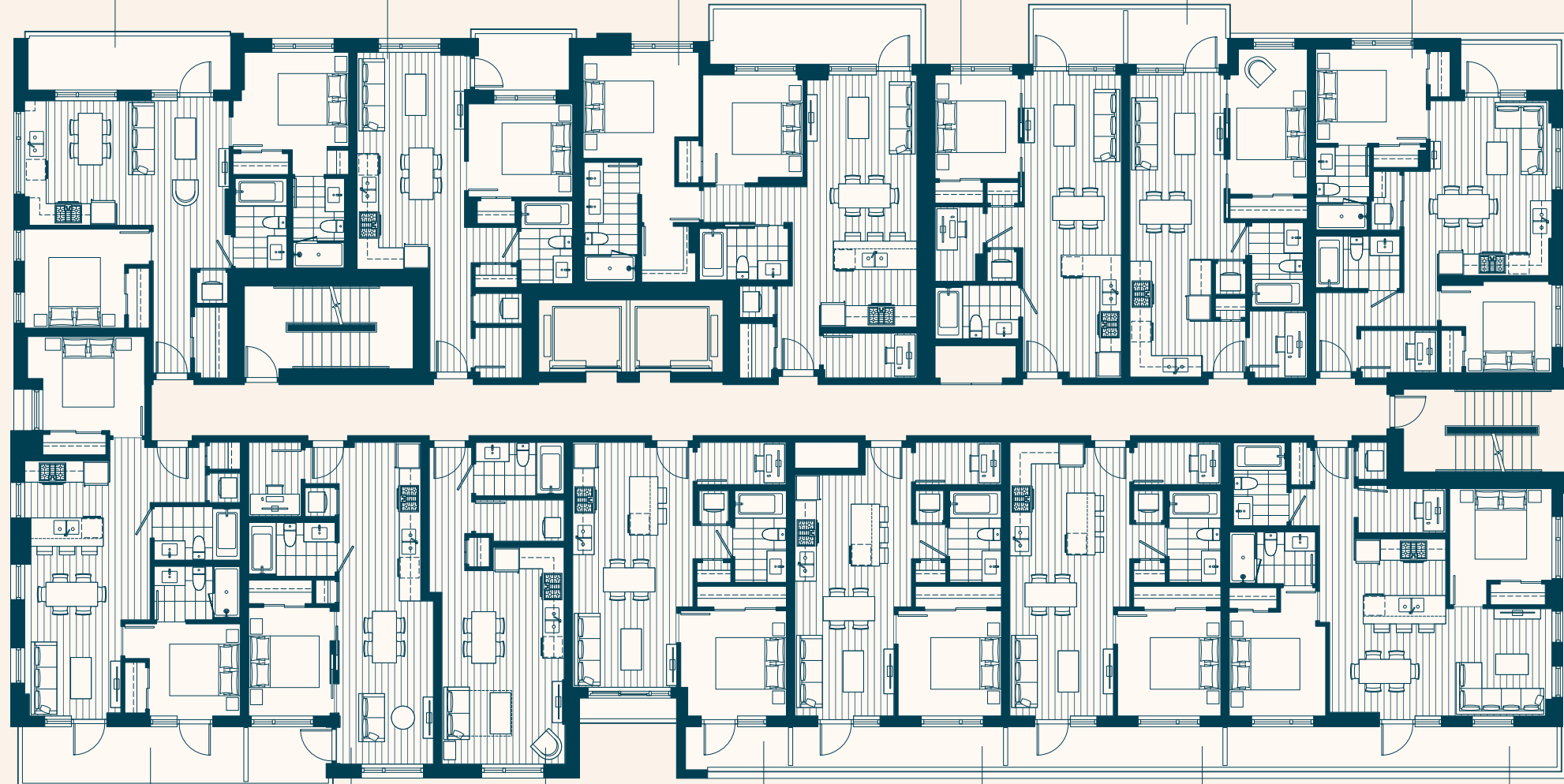
Interior: 565 - 567 sf
Exterior: 58 - 98 sf

TOTAL: 623 - 665 sf

204
Plan C3
2 Bedroom + Den

Interior: 724 sf
Exterior: 47 - 55 sf

TOTAL: 771 - 779 sf



211
Plan C5
2 Bedroom

Interior: 722 - 745 sf
Exterior: 131 - 167 sf

TOTAL: 853 - 912 sf

210
Plan B3
1 Bedroom + Den

Interior: 544 sf
Exterior: 47 - 111 sf

TOTAL: 591 - 655 sf

209
Plan A2
Studio

Interior: 428 - 438 sf

TOTAL: 428 - 438 sf

208
Plan B9
1 Bedroom + Den

Interior: 562 sf
Exterior: 73 - 74 sf

TOTAL: 635 - 636 sf

207
Plan B1a
1 Bedroom + Den

Interior: 552 - 561 sf
Exterior: 93 - 163 sf

TOTAL: 645 - 724 sf

206
Plan B1
1 Bedroom + Den

Interior: 587 sf
Exterior: 94 - 190 sf

TOTAL: 681 - 777 sf

205
Plan C1
2 Bedroom + Den

Interior: 812 sf
Exterior: 147 - 268 sf

TOTAL: 959 - 1,080 sf

Level 2
N

The developer reserves the right to substitute any material, fixture, appliance or finishing with an equivalent material, fixture, appliance or finishing at the developer's sole discretion. In our continuing effort to meet the challenge of product improvement, we reserve the right to modify or change plans, specifications, or prices without notice. Renderings are an artist's conception only and are intended as a general reference. All dimensions and sizes are approximate. As reverse plans occur throughout the project, please check architectural plans. Refer to disclosure statement for specific offering details. E. & O.E.

-12
Plan C4
 2 Bedroom

Interior: 767 sf
 Exterior: 116 - 117 sf

TOTAL: 883 - 884 sf

-13
Plan B2
 1 Bedroom + Den

Interior: 531 sf
 Exterior: 51 sf

TOTAL: 582 sf

-01
Plan C6
 2 Bedroom + Den

Interior: 915 sf
 Exterior: 122 sf

TOTAL: 1,037 sf

-02
Plan B7
 1 Bedroom + Den

Interior: 553 - 583 sf
 Exterior: 55 - 129 sf

TOTAL: 608 - 712 sf

-03
Plan B8
 1 Bedroom + Den

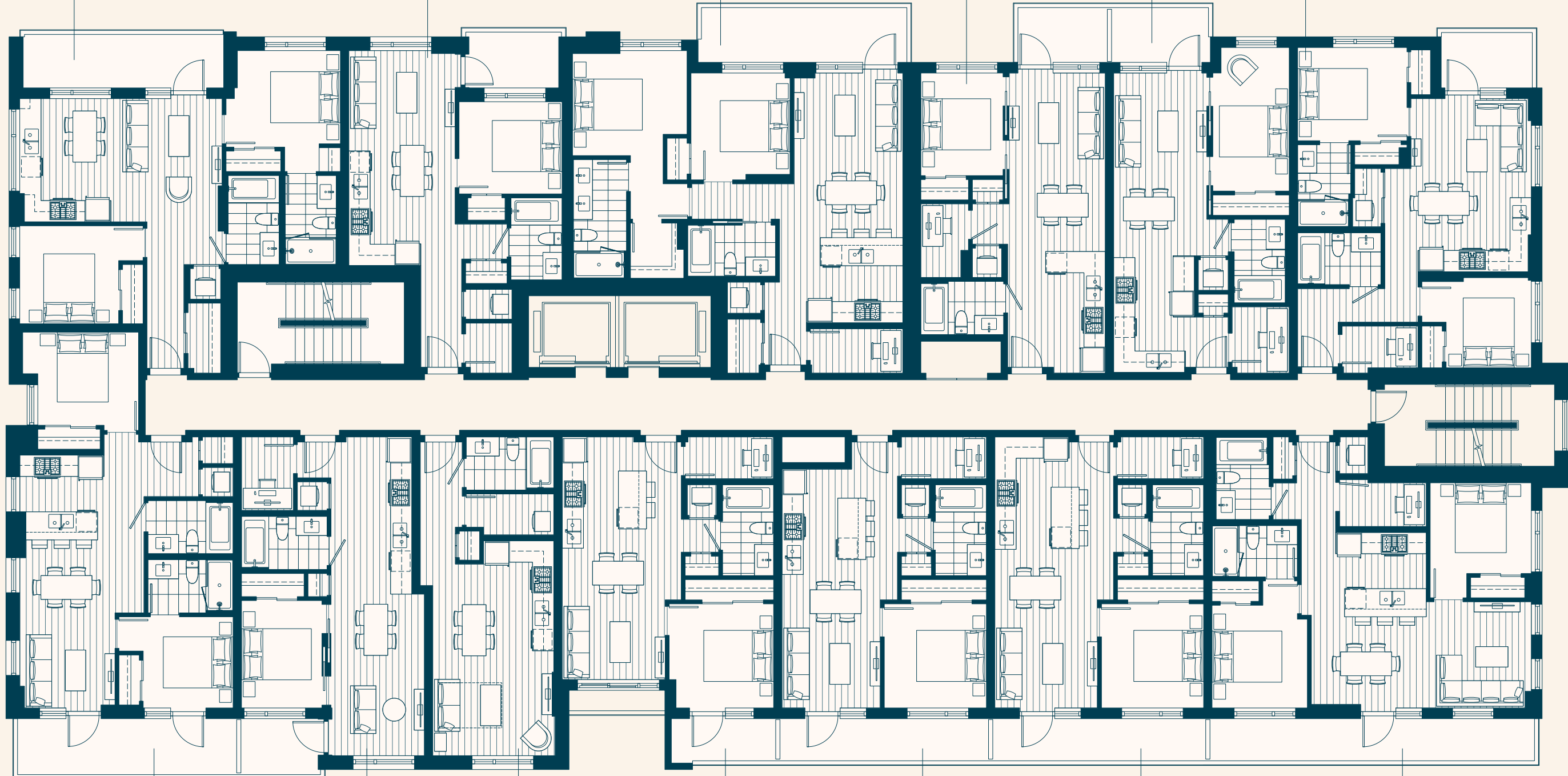
Interior: 565 - 567 sf
 Exterior: 58 - 98 sf

TOTAL: 623 - 665 sf

-04
Plan C3
 2 Bedroom + Den

Interior: 724 sf
 Exterior: 47 - 55 sf

TOTAL: 771 - 779 sf



-11
Plan C5
 2 Bedroom

Interior: 722 - 745 sf
 Exterior: 131 - 167 sf

TOTAL: 853 - 912 sf

-10
Plan B3
 1 Bedroom + Den

Interior: 544 sf
 Exterior: 47 - 111 sf

TOTAL: 591 - 655 sf

-09
Plan A2
 Studio

Interior: 428 - 438 sf

TOTAL: 428 - 438 sf

-08
Plan B9
 1 Bedroom + Den

Interior: 562 sf
 Exterior: 73 - 74 sf

TOTAL: 635 - 636 sf

-07
Plan B1a
 1 Bedroom + Den

Interior: 552 - 561 sf
 Exterior: 93 - 163 sf

TOTAL: 645 - 724 sf

-06
Plan B1
 1 Bedroom + Den

Interior: 587 sf
 Exterior: 94 - 190 sf

TOTAL: 681 - 777 sf

-05
Plan C1
 2 Bedroom + Den

Interior: 812 sf
 Exterior: 147 - 268 sf

TOTAL: 959 - 1,080 sf

Level 3-4



509
 Plan D2
 3 Bedroom + Den

Interior: 1,118 sf
 Exterior: 559 sf

TOTAL: 1,677 sf

501
 Plan B6
 1 Bedroom + Den

Interior: 596 sf
 Exterior: 194 sf

TOTAL: 790 sf

502
 Plan B5
 1 Bedroom + Flex

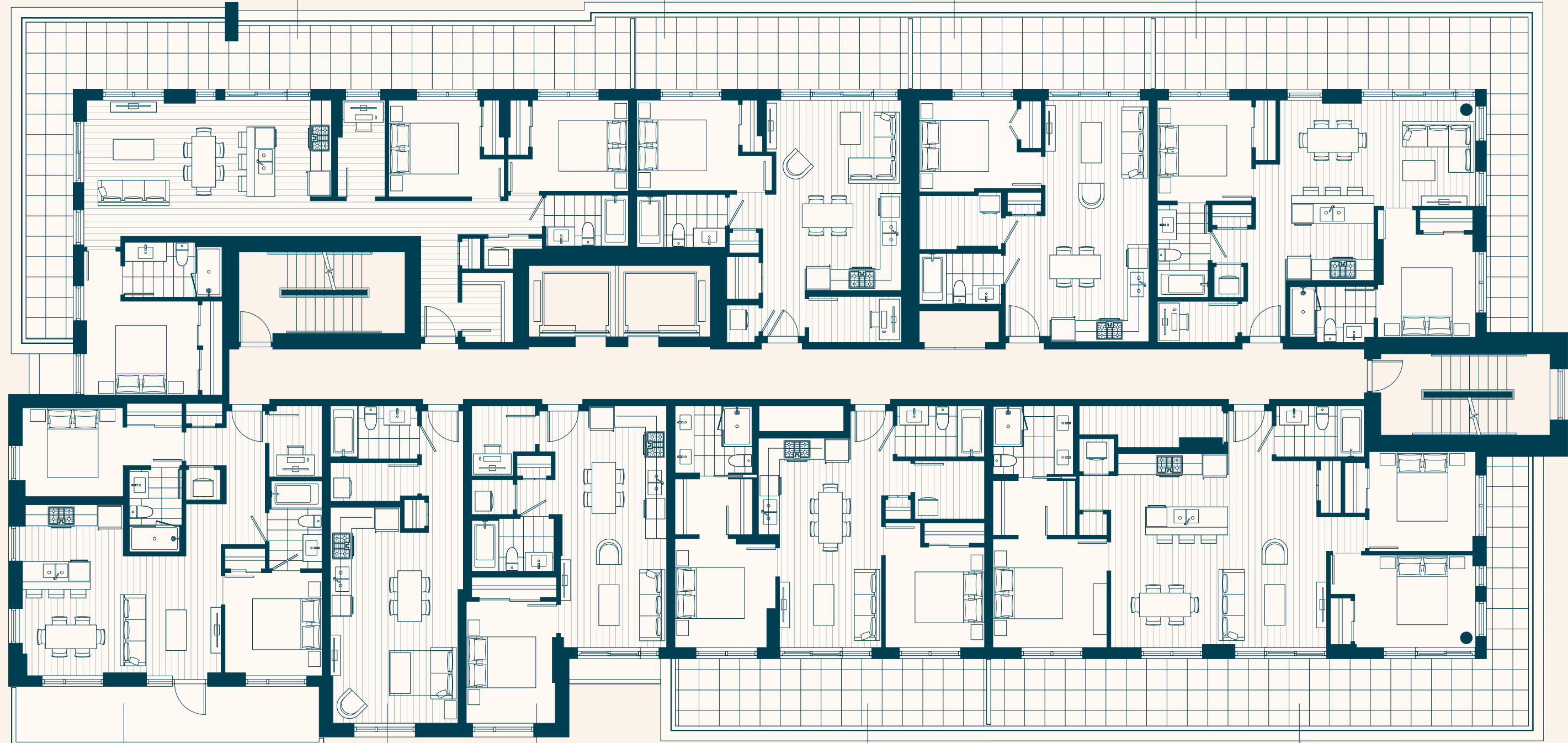
Interior: 560 sf
 Exterior: 171 sf

TOTAL: 731 sf

503
 Plan C8
 2 Bedroom + Den

Interior: 795 sf
 Exterior: 362 sf

TOTAL: 1,157 sf



508
 Plan C10
 2 Bedroom + Den

Interior: 840 sf
 Exterior: 177 sf

TOTAL: 1,017 sf

507
 Plan A3
 Studio

Interior: 440 sf

TOTAL: 440 sf

506
 Plan B4
 1 Bedroom + Den

Interior: 569 sf
 Exterior: 25 sf

TOTAL: 594 sf

505
 Plan C9
 2 Bedroom + Flex

Interior: 748 sf
 Exterior: 231 sf

TOTAL: 979sf

504
 Plan D1
 3 Bedroom + Den

Interior: 1,150 sf
 Exterior: 495 sf

TOTAL: 1,645 sf

Level 5



The developer reserves the right to substitute any material, fixture, appliance or finishing with an equivalent material, fixture, appliance or finishing at the developer's sole discretion. In our continuing effort to meet the challenge of product improvement, we reserve the right to modify or change plans, specifications, or prices without notice. Renderings are an artist's conception only and are intended as a general reference. All dimensions and sizes are approximate. As reverse plans occur throughout the project, please check architectural plans. Refer to disclosure statement for specific offering details, E. & O.E.

608
Plan PH5
3 Bedroom + Den

Interior: 1,179 sf
Exterior: 214 sf
Rooftop: 758 sf

TOTAL: 2,151 sf

601
Plan B6
1 Bedroom + Den

Interior: 596 sf
Exterior: 215 sf

TOTAL: 811 sf

602
Plan B5
1 Bedroom + Flex

Interior: 560 sf
Exterior: 108 sf

TOTAL: 668 sf

603
Plan PH1
2 Bedroom + Den

Interior: 795 sf
Exterior: 319 sf
Rooftop: 744 sf

TOTAL: 1,858 sf



607
Plan PH3
2 Bedroom + Den

Interior: 770 sf
Exterior: 278 sf

TOTAL: 1,048 sf

606
Plan C11
2 Bedroom + Den

Interior: 803 sf
Exterior: 79 sf

TOTAL: 882 sf

605
Plan PH2
2 Bedroom

Interior: 793 sf
Exterior: 178 sf
Rooftop: 580 sf

TOTAL: 1,551 sf

604
Plan PH4
3 Bedroom + Den

Interior: 1,203 sf
Exterior: 157 sf
Rooftop: 731 sf

TOTAL: 2,091 sf

Level 6

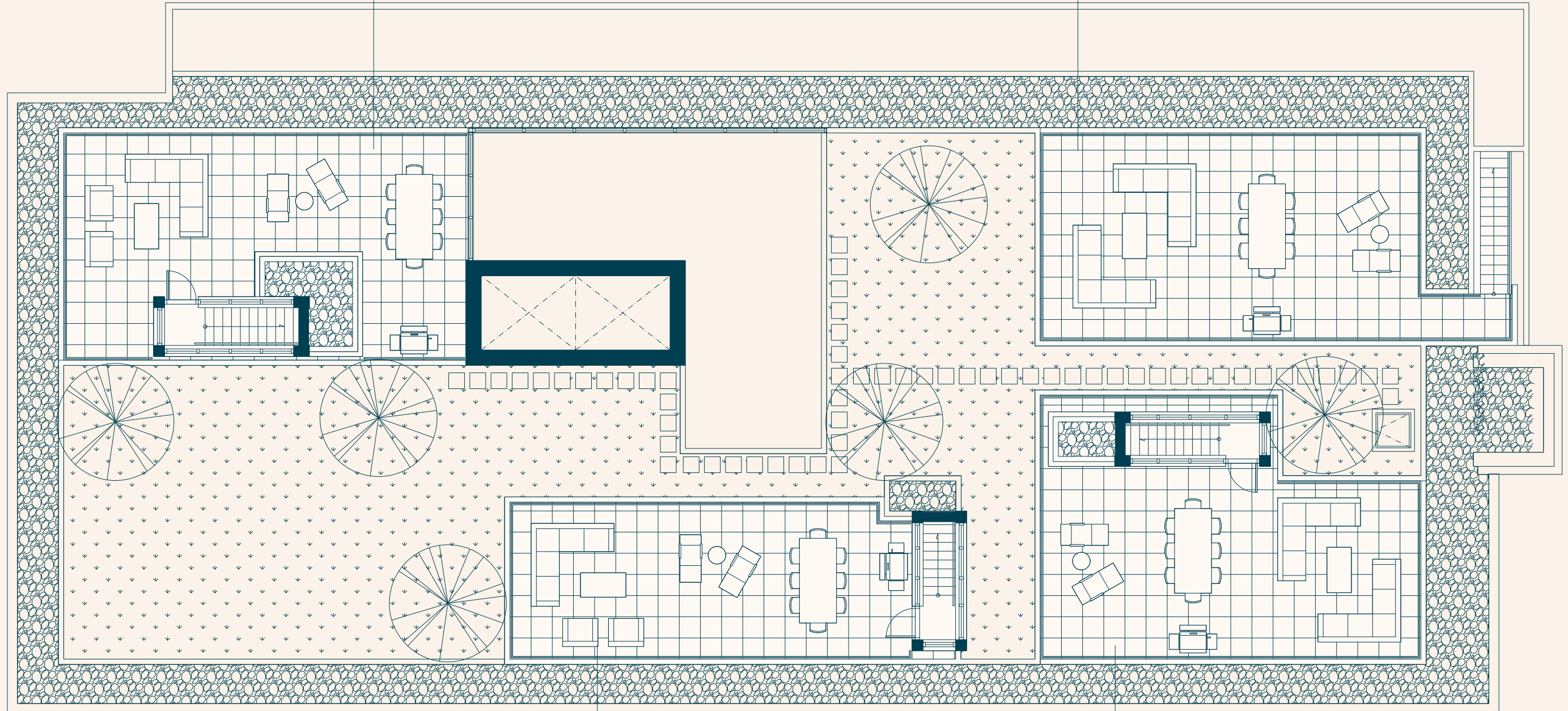


608
 Plan PH5

Rooftop: 758 sf

603
 Plan PH1

Rooftop: 744 sf



605
 Plan PH2

Rooftop: 580 sf

604
 Plan PH4

Rooftop: 731 sf

Level 7
 N