

georgetown 2

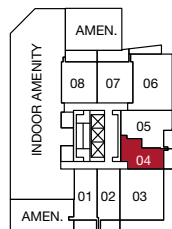
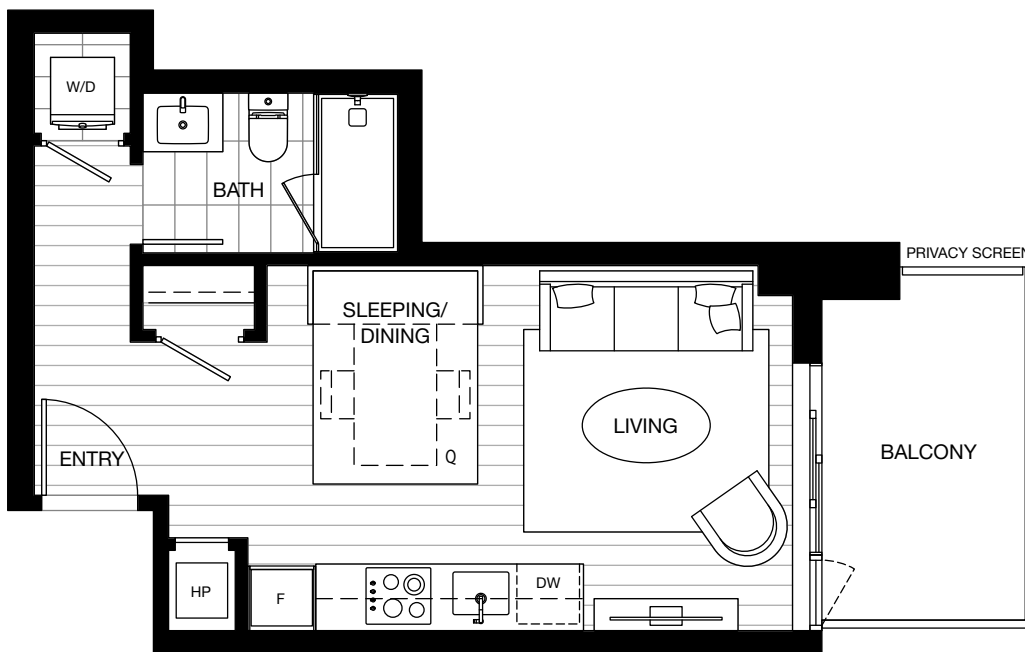
a plan

studio

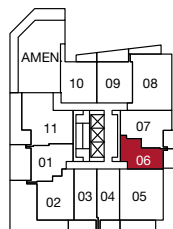
indoor: 363-364 sq ft

outdoor: 75-78 sq ft

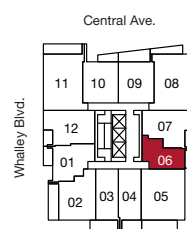
total: 438-442 sq ft



level 2



level 3



levels 4-31



The developer reserves the right to make changes and modifications to the information contained herein. Floorplans and floorplates are subject to change without notice. Please contact a developer sales representative for details. This is not an offering for sale, as an offering can only be made after the filing of a disclosure statement, and only in jurisdictions where qualified in accordance with applicable local laws. E.&O.E.

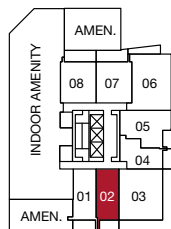
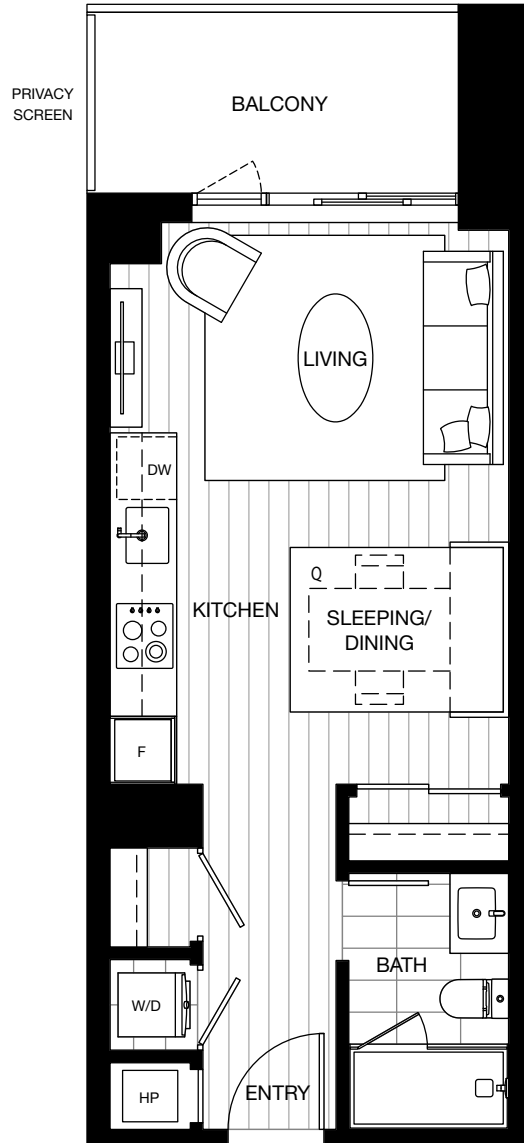


georgetown 2

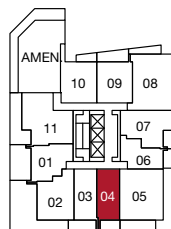
a1 plan

studio

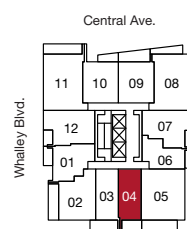
indoor: 399 sq ft
 outdoor: 62-83 sq ft
 total: 461-482 sq ft



level 2



level 3



levels 4-31



The developer reserves the right to make changes and modifications to the information contained herein. Floorplans and floorplates are subject to change without notice. Please contact a developer sales representative for details. This is not an offering for sale, as an offering can only be made after the filing of a disclosure statement, and only in jurisdictions where qualified in accordance with applicable local laws. E.&O.E.



georgetown 2

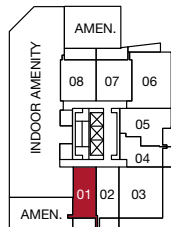
a1a plan

studio

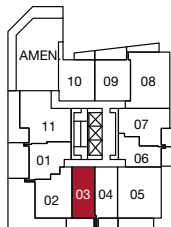
indoor: 399-410 sq ft

outdoor: 77-86 sq ft

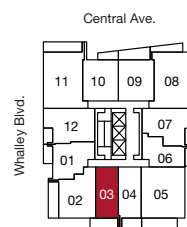
total: 476-496 sq ft



level 2



level 3



levels 4-31



The developer reserves the right to make changes and modifications to the information contained herein. Floorplans and floorplates are subject to change without notice. Please contact a developer sales representative for details. This is not an offering for sale, as an offering can only be made after the filing of a disclosure statement, and only in jurisdictions where qualified in accordance with applicable local laws. E.&O.E.

