

# georgetown 2

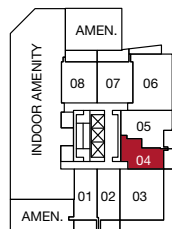
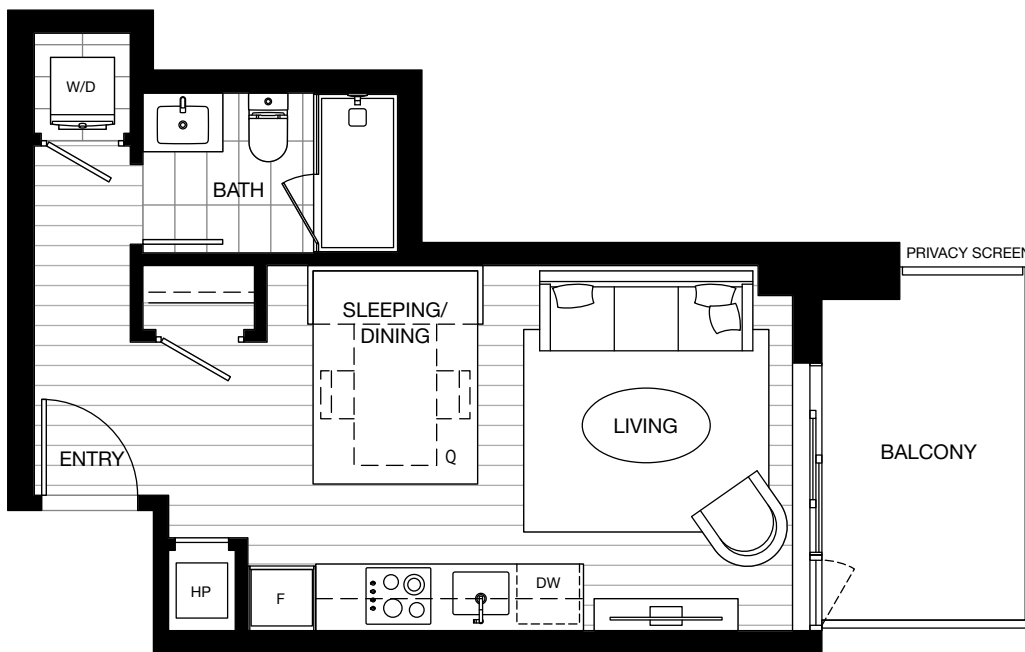
# a plan

**studio**

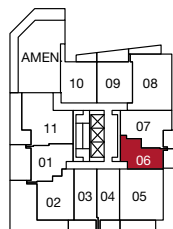
indoor: 363-364 sq ft

outdoor: 75-78 sq ft

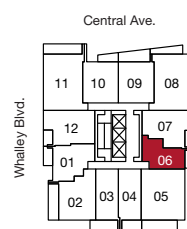
total: 438-442 sq ft



level 2



level 3



levels 4-31



The developer reserves the right to make changes and modifications to the information contained herein. Floorplans and floorplates are subject to change without notice. Please contact a developer sales representative for details. This is not an offering for sale, as an offering can only be made after the filing of a disclosure statement, and only in jurisdictions where qualified in accordance with applicable local laws. E.&O.E.

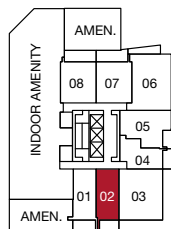
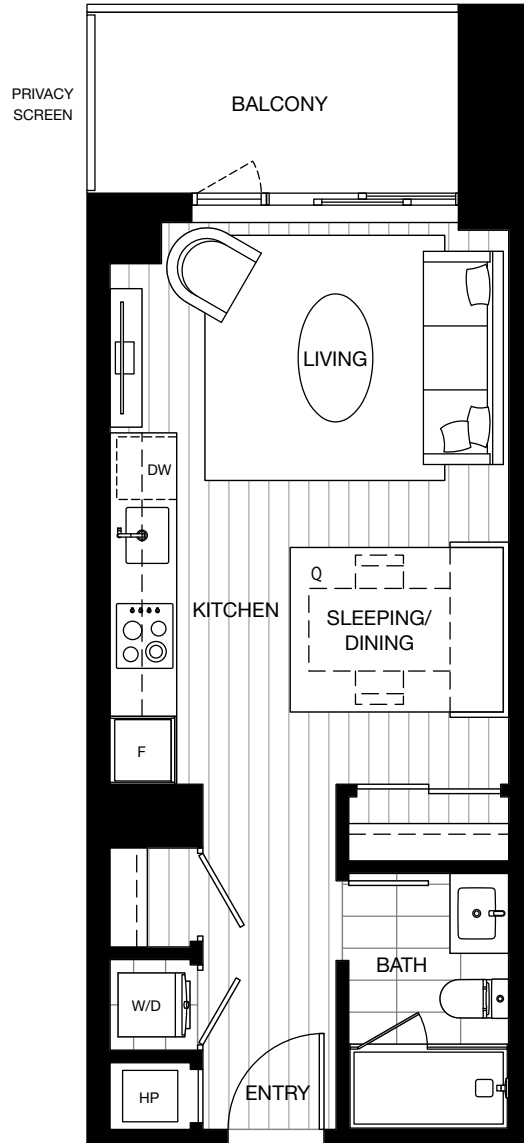


# georgetown 2

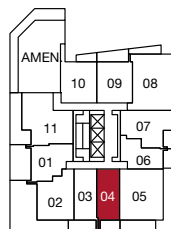
# a1 plan

**studio**

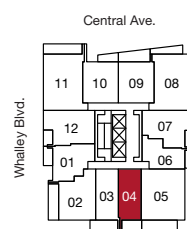
indoor: 399 sq ft  
 outdoor: 62-83 sq ft  
 total: 461-482 sq ft



level 2



level 3



levels 4-31



The developer reserves the right to make changes and modifications to the information contained herein. Floorplans and floorplates are subject to change without notice. Please contact a developer sales representative for details. This is not an offering for sale, as an offering can only be made after the filing of a disclosure statement, and only in jurisdictions where qualified in accordance with applicable local laws. E.&O.E.



# georgetown 2

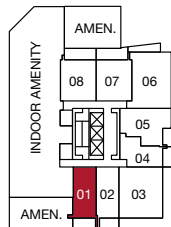
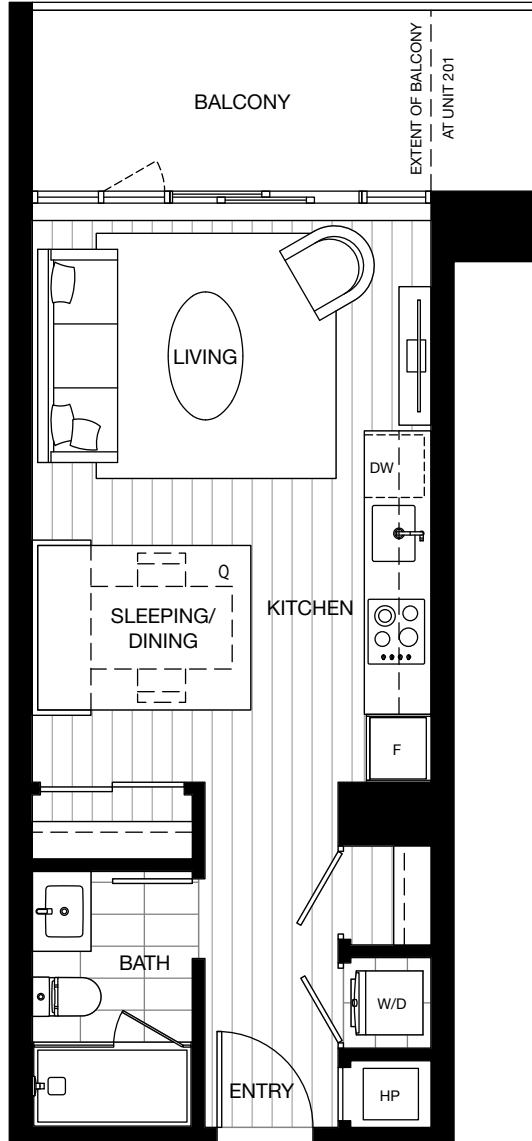
# a1a plan

**studio**

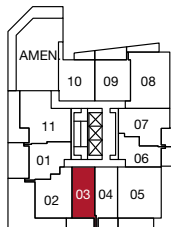
indoor: 399-410 sq ft

outdoor: 77-86 sq ft

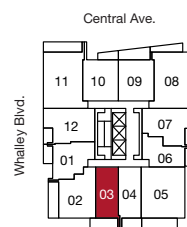
total: 476-496 sq ft



level 2



level 3



levels 4-31



The developer reserves the right to make changes and modifications to the information contained herein. Floorplans and floorplates are subject to change without notice. Please contact a developer sales representative for details. This is not an offering for sale, as an offering can only be made after the filing of a disclosure statement, and only in jurisdictions where qualified in accordance with applicable local laws. E.&O.E.

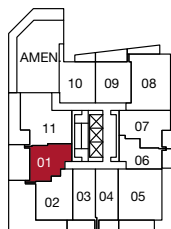


# georgetown 2

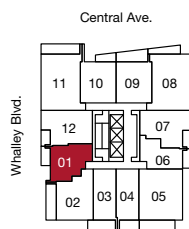
# b plan

1 bedroom

indoor: 453 sq ft  
 outdoor: 60-245 sq ft  
 total: 513-698 sq ft



level 3



levels 4-31



The developer reserves the right to make changes and modifications to the information contained herein. Floorplans and floorplates are subject to change without notice. Please contact a developer sales representative for details. This is not an offering for sale, as an offering can only be made after the filing of a disclosure statement, and only in jurisdictions where qualified in accordance with applicable local laws. E.&O.E.



# georgetown 2

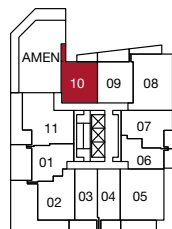
# b1 plan

**1 bedroom**

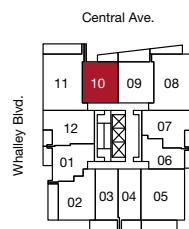
indoor: 485-504 sq ft

outdoor: 62-129 sq ft

total: 547-633 sq ft



level 3



levels 4-31



The developer reserves the right to make changes and modifications to the information contained herein. Floorplans and floorplates are subject to change without notice. Please contact a developer sales representative for details. This is not an offering for sale, as an offering can only be made after the filing of a disclosure statement, and only in jurisdictions where qualified in accordance with applicable local laws. E.&O.E.



georgetown 2

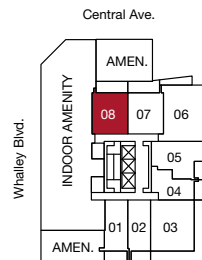
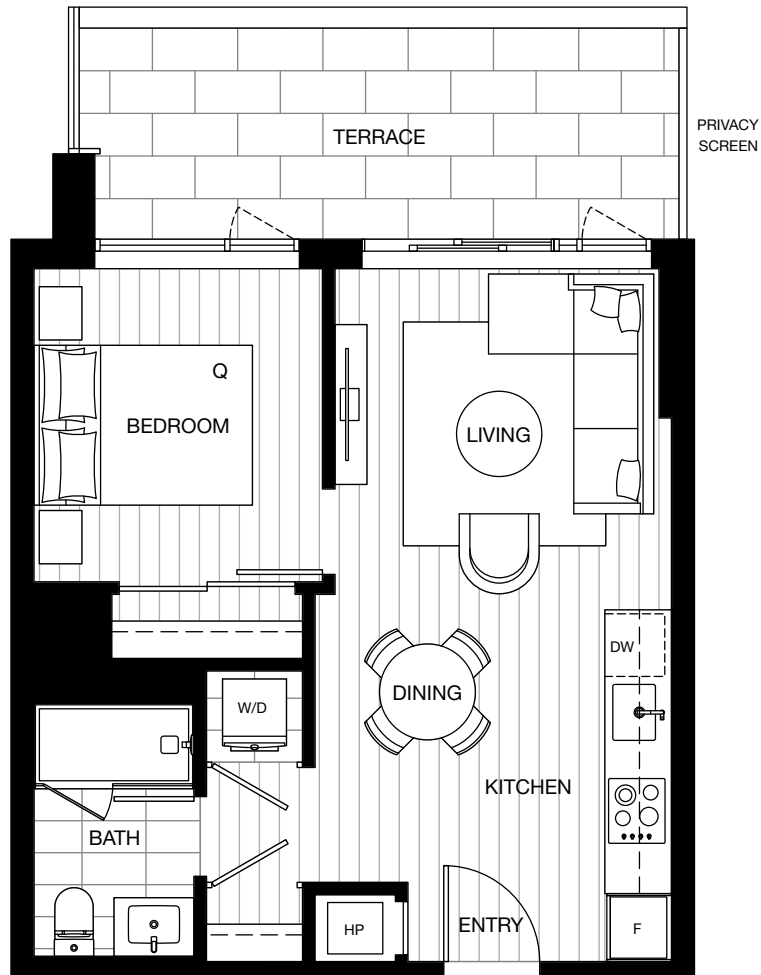
# b1 plan - 208

1 bedroom

indoor: 485 sq ft

outdoor: 129 sq ft

total: 614 sq ft



level 2



The developer reserves the right to make changes and modifications to the information contained herein. Floorplans and floorplates are subject to change without notice. Please contact a developer sales representative for details. This is not an offering for sale, as an offering can only be made after the filing of a disclosure statement, and only in jurisdictions where qualified in accordance with applicable local laws. E.&O.E.

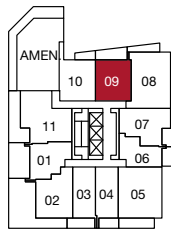
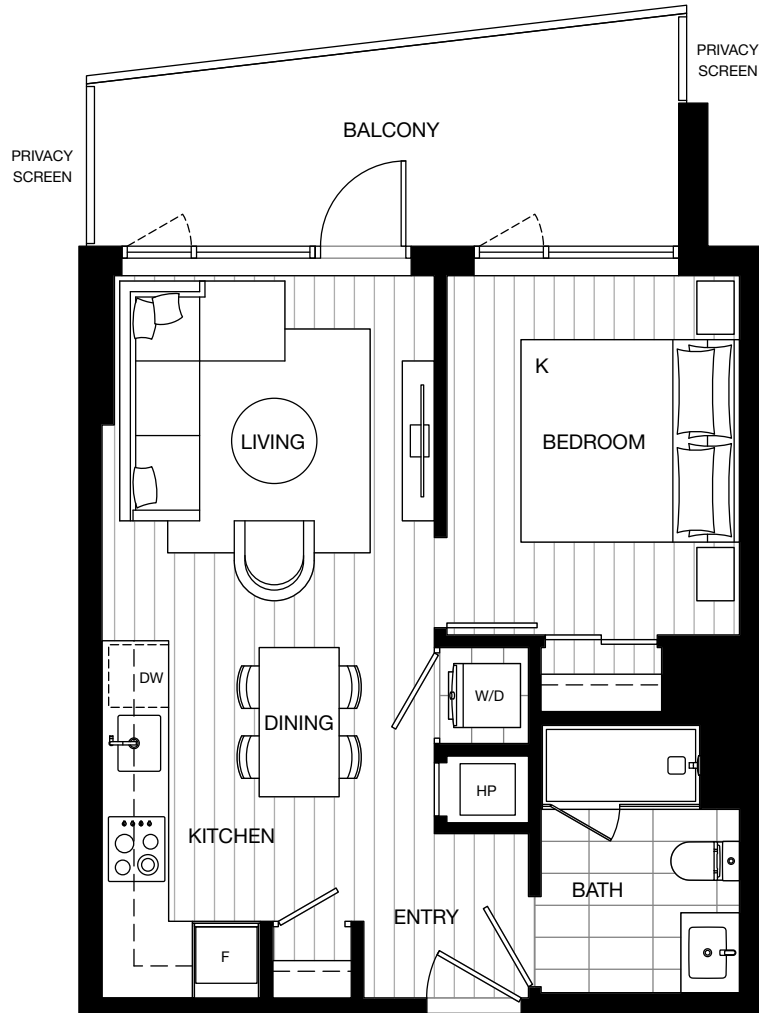


# georgetown 2

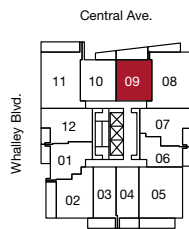
# b1a plan

**1 bedroom**

indoor: 478-495 sq ft  
 outdoor: 124-126 sq ft  
 total: 602-621 sq ft



**level 3**



**levels 4-31**



The developer reserves the right to make changes and modifications to the information contained herein. Floorplans and floorplates are subject to change without notice. Please contact a developer sales representative for details. This is not an offering for sale, as an offering can only be made after the filing of a disclosure statement, and only in jurisdictions where qualified in accordance with applicable local laws. E.&O.E.

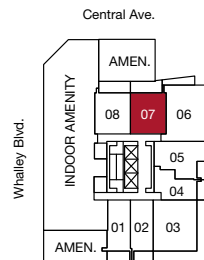
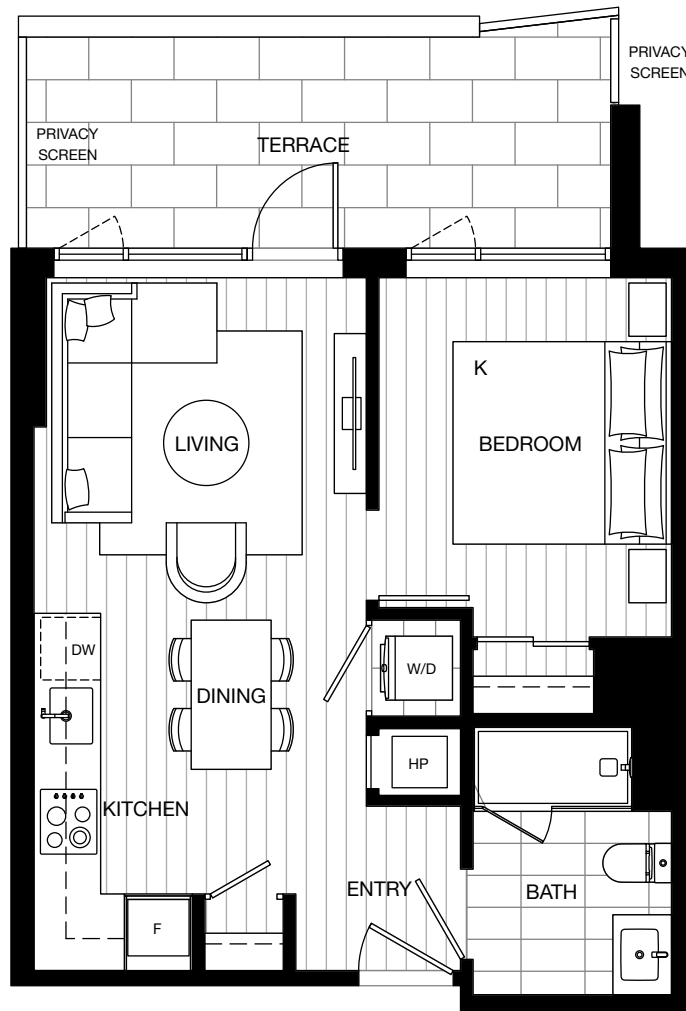


georgetown 2

# b1a plan - 207

1 bedroom

indoor: 478 sq ft  
outdoor: 124 sq ft  
total: 602 sq ft



level 2



The developer reserves the right to make changes and modifications to the information contained herein. Floorplans and floorplates are subject to change without notice. Please contact a developer sales representative for details. This is not an offering for sale, as an offering can only be made after the filing of a disclosure statement, and only in jurisdictions where qualified in accordance with applicable local laws. E.&O.E.



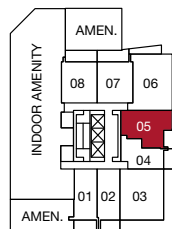


# georgetown 2

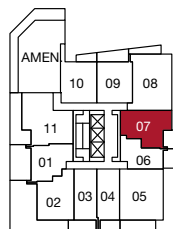
# b2 plan

**1 bedroom**

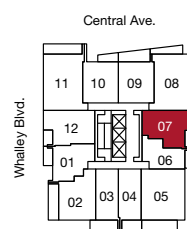
indoor: 533 sq ft  
 outdoor: 71-72 sq ft  
 total: 604-605 sq ft



level 2



level 3



levels 4-31



The developer reserves the right to make changes and modifications to the information contained herein. Floorplans and floorplates are subject to change without notice. Please contact a developer sales representative for details. This is not an offering for sale, as an offering can only be made after the filing of a disclosure statement, and only in jurisdictions where qualified in accordance with applicable local laws. E.&O.E.

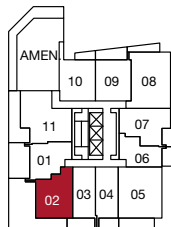
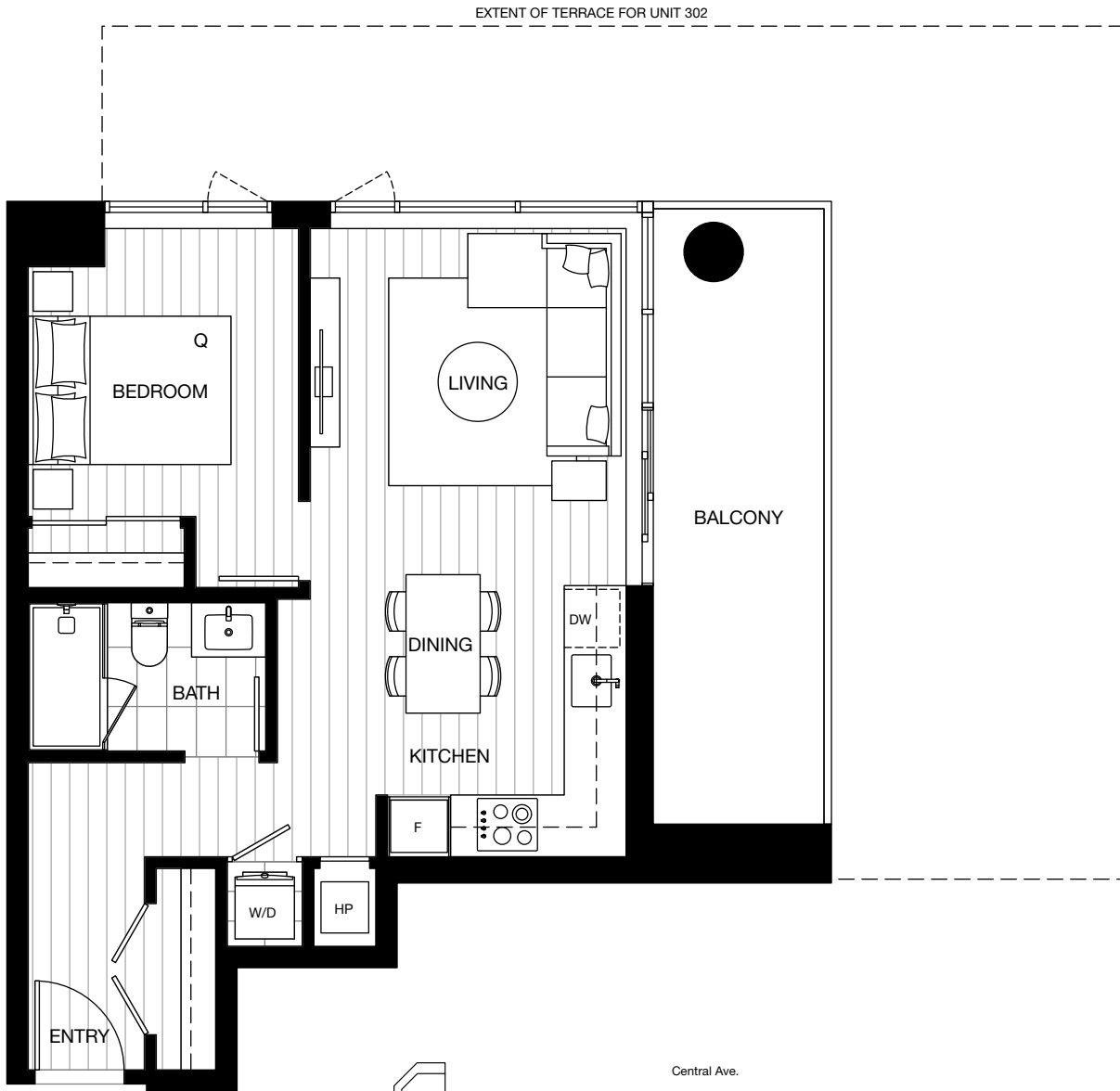


# georgetown 2

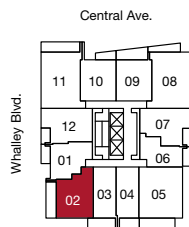
# b3 plan

1 bedroom

indoor: 559 sq ft  
outdoor: 124-548 sq ft  
total: 683-1,107 sq ft



level 3



levels 4-31



The developer reserves the right to make changes and modifications to the information contained herein. Floorplans and floorplates are subject to change without notice. Please contact a developer sales representative for details. This is not an offering for sale, as an offering can only be made after the filing of a disclosure statement, and only in jurisdictions where qualified in accordance with applicable local laws. E.&O.E.



# georgetown 2

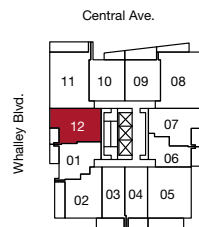
# c plan

1 bedroom + den

indoor: 548 sq ft

outdoor: 53 sq ft

total: 601 sq ft



levels 4-31



The developer reserves the right to make changes and modifications to the information contained herein. Floorplans and floorplates are subject to change without notice. Please contact a developer sales representative for details. This is not an offering for sale, as an offering can only be made after the filing of a disclosure statement, and only in jurisdictions where qualified in accordance with applicable local laws. E.&O.E.

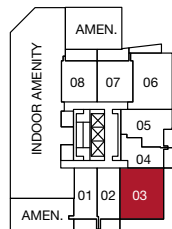


# georgetown 2

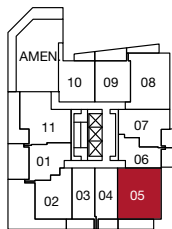
# d plan

2 bedroom

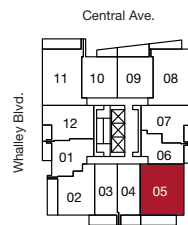
indoor: 763 sq ft  
 outdoor: 116-392 sq ft  
 total: 879-1,155 sq ft



level 2



level 3



levels 4-31



The developer reserves the right to make changes and modifications to the information contained herein. Floorplans and floorplates are subject to change without notice. Please contact a developer sales representative for details. This is not an offering for sale, as an offering can only be made after the filing of a disclosure statement, and only in jurisdictions where qualified in accordance with applicable local laws. E.&O.E.

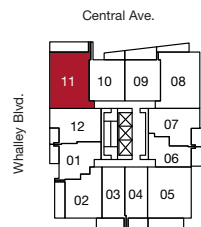


# georgetown 2

# d1 plan

2 bedroom

indoor: 784 sq ft  
outdoor: 121 sq ft  
total: 905 sq ft



levels 4-31



The developer reserves the right to make changes and modifications to the information contained herein. Floorplans and floorplates are subject to change without notice. Please contact a developer sales representative for details. This is not an offering for sale, as an offering can only be made after the filing of a disclosure statement, and only in jurisdictions where qualified in accordance with applicable local laws. E.&O.E.



# georgetown 2

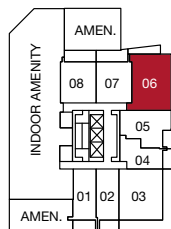
# d1a plan

2 bedroom

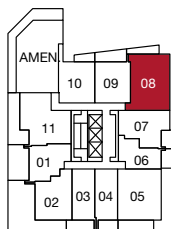
indoor: 779-781 sq ft

outdoor: 75 sq ft

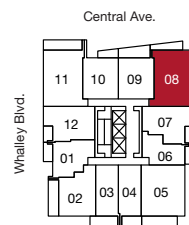
total: 854-856 sq ft



level 2



level 3



levels 4-31



The developer reserves the right to make changes and modifications to the information contained herein. Floorplans and floorplates are subject to change without notice. Please contact a developer sales representative for details. This is not an offering for sale, as an offering can only be made after the filing of a disclosure statement, and only in jurisdictions where qualified in accordance with applicable local laws. E.&O.E.



# georgetown 2

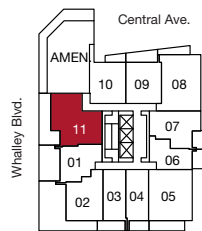
# e plan

2 bedroom + den

indoor: 736 sq ft

outdoor: 269 sq ft

total: 1,005 sq ft



level 3



The developer reserves the right to make changes and modifications to the information contained herein. Floorplans and floorplates are subject to change without notice. Please contact a developer sales representative for details. This is not an offering for sale, as an offering can only be made after the filing of a disclosure statement, and only in jurisdictions where qualified in accordance with applicable local laws. E.&O.E.

