



# EVOLUTION OF DESIGN

Through the cumulative effort of developer and architects, unfolded over 3 years of thoughtful planning, the design of Cascade City was polished and refined. After several iterations, our vision was achieved: an iconic architectural form.



The fluid nature of Cascade City's architecture is inspired by the dynamic movements of the Fraser River. Simulating a geography shaped by the water, the vertical structure is layered to resemble the rhythmic topography of the river. This architectural flow creates an expression that beautifully replicates two contrasting qualities of nature – tranquility and strength.



*Initial sketch*



*Early draft model*



*Alternative concept*



*To scale model*



*Line Rendering*



*Rendering detail\**



\*Artist's interpretation



This is not an offering for sale. Illustrations are for marketing purposes only and may differ from finished product. The developer reserves the right to change or modify the offer without prior notice. Features, specifications, floorplans and images are approximate only. All amenities are planned and are subject to change without notice. E.&O.E.



This is not an offering for sale. Illustrations are for marketing purposes only and may differ from finished product. The developer reserves the right to change or modify the offer without prior notice. Features, specifications, floorplans and images are approximate only. All amenities are planned and are subject to change without notice. E.&O.E.

### AN ICONIC BUILDING

- Designed through a collaboration between renowned Arno Matis Architecture and Rafii Architects
- Designed to LEED Silver equivalent sustainability standard
- Adaptable to City of Richmond’s renewable energy guidelines

### SOPHISTICATED INTERIORS

- Colour schemes: Select from two designer-appointed colour schemes
  - **Light:** Fresh white cabinets, contemporary white countertops, with light oak engineered hardwood floors
  - **Dark:** Chic grey cabinets, contemporary white countertops, with dark oak engineered hardwood floors
- Floor-to-ceiling windows and shallow suites allow for maximum natural light exposure
- Beautifully engineered hardwood floors throughout living, dining, and bedrooms
- Air conditioned homes for all-season comfort
- Expansive terraces and/or balconies provide generous outdoor living space in all homes
- Private rooftop garden for townhomes and penthouses

### GOURMET KITCHEN

- Modern Italian, high-gloss, flat-panel **Aster Cucine** cabinets
- Elegant under-cabinet lighting
- Polished, Italian-inspired quartz countertop with matching backsplash
- Exceptional **Grohe** faucet with convenient garburator
- Full line of sleek, high-end designer kitchen appliances
  - **Miele** built-in wall oven

- **Miele** integrated dishwasher
- **Panasonic** built-in microwave
- 1 bedroom and junior 2 bedroom homes contain:
  - **Miele** 24” integrated refrigerator
  - **Miele** 24” 4-burner gas cooktop
  - **Miele** 24” built-in hood fan
- Large 2 bedroom homes and 3 bedroom homes contain:
  - **Miele** 30” stainless steel refrigerator
  - **Miele** 30” 4-burner gas cooktop
  - **Miele** 30” built-in hood fan

### LUXURIOUS MASTER ENSUITE & GUEST BATHROOM

- Luxurious quartz countertops
- Stylish **Aquabrass** faucet and shower kit
- Modern Italian, high-gloss, flat-panel **Aster Cucine** cabinets
- LED under-cabinet lighting
- Contemporary mirror medicine cabinets for extra storage
- Beautiful marble-inspired porcelain tile
- Best-in-class **Duravit** dual-flush toilet and undermount sink

### INSPIRING AMENITIES

- Club Cascade: Over 3,000 sq.ft. of resort-inspired fitness space, featuring double-height ceilings, **Technogym** equipment, and multi-functional studio space for yoga and dance
- Multi-functional club lounge for exclusive use by residents, including:
  - Exquisite kitchen and dining space
  - Recreation space with ping pong and billiards tables

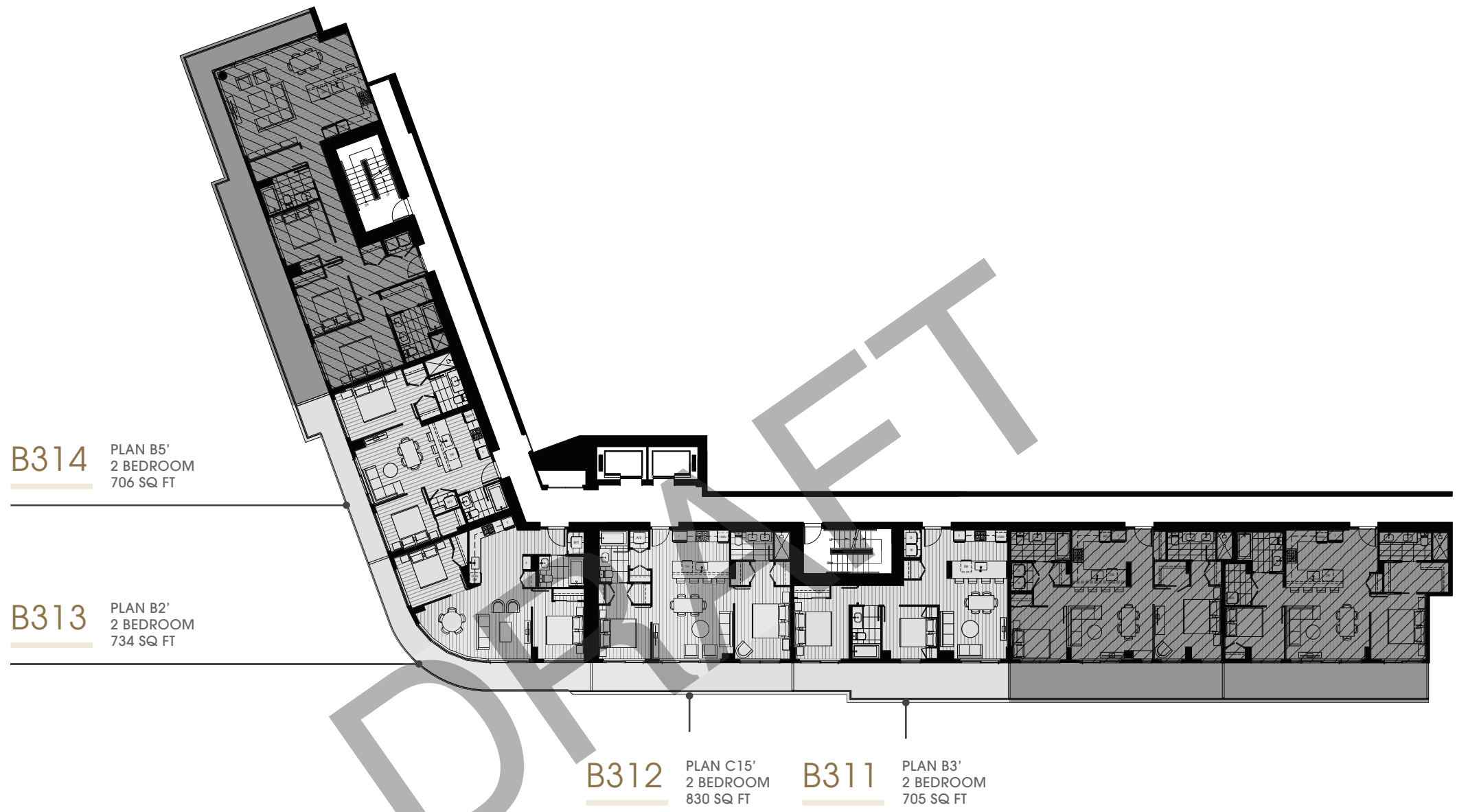
- Relaxing designer lounge area
- Mahjong room
- Over 25,000 sq.ft. of tranquil podium-level outdoor space, featuring:
  - Peaceful dry stone riverbed
  - Stone-paved promenade weaving through entire podium level
  - Spacious lounge seating area
- Elegantly appointed guest suite for friends and family
- Piano room perfect for rehearsal space
- Music & violin practice room with music stand and chairs
- Meeting room for quiet study or group gatherings
- Theatre & karaoke room to socialize with friends
- Secure parking accessed with encrypted key fob
- Convenient car wash station
- Electric vehicle charging stations and rough-ins available
- Storage lockers available for purchase
- Bike lockers/spaces

### PEACE OF MIND AND CONVENIENCE

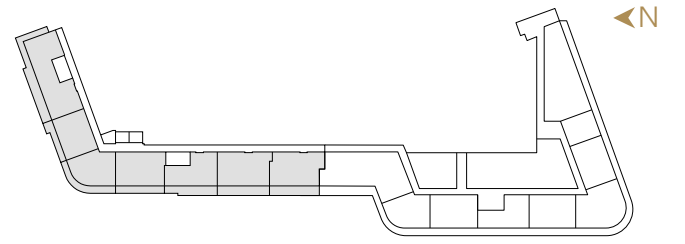
- Standard 2/5/10 warranty coverage
- 1 year free - Shaw Personal TV, Internet 15, and Personal Phone service
- 24-hour property management service line for all your service needs
- 24-hour monitoring of building and parking entrances by closed-circuit cameras
- Common area with wheelchair accessibility

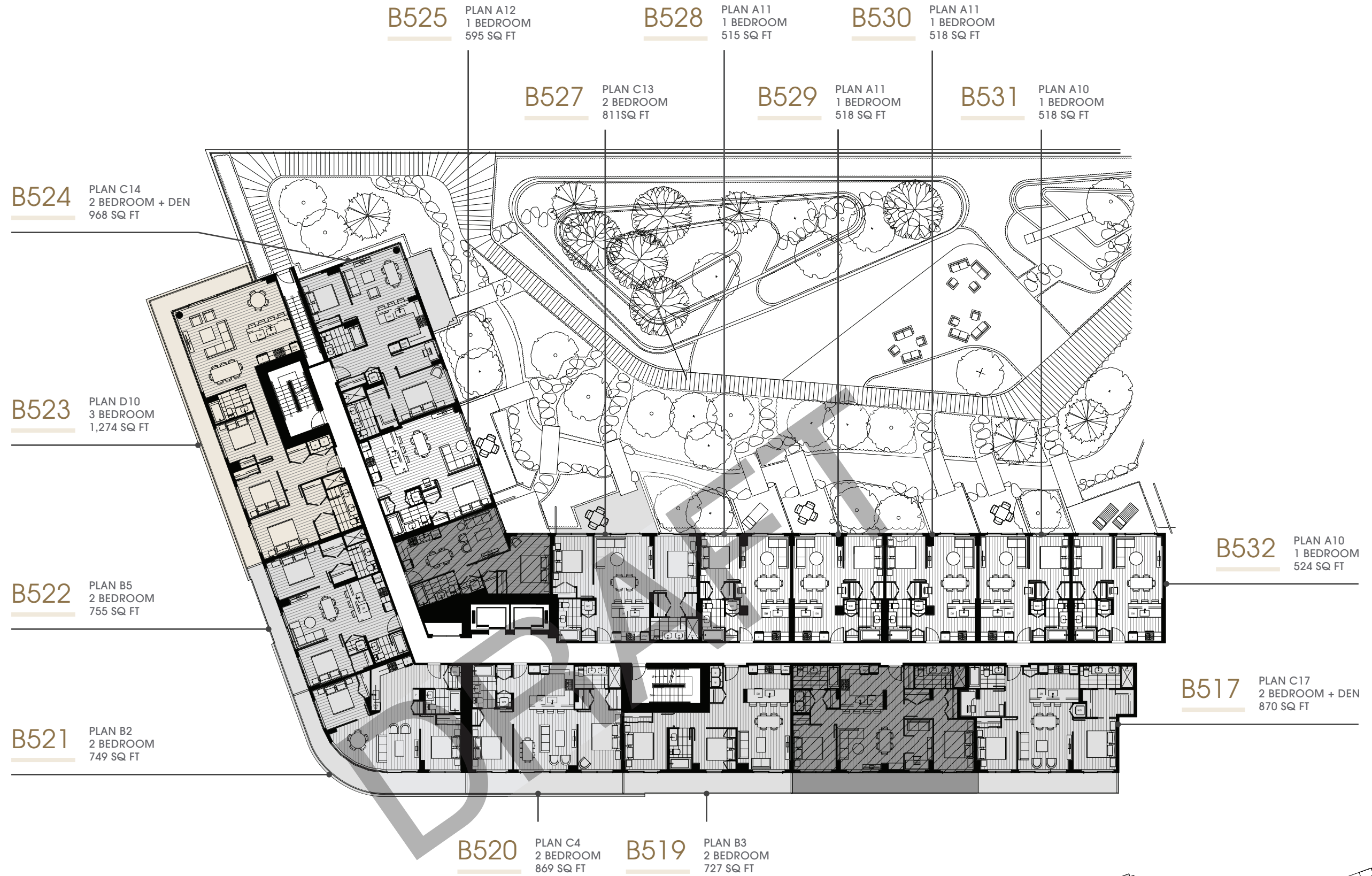


The developer reserves the right to make minor modifications or substitutions to building design, specifications, and floor plans if necessary to maintain the high standards of this community. Square footage estimates are based on surveyor’s measurements and are approximate.



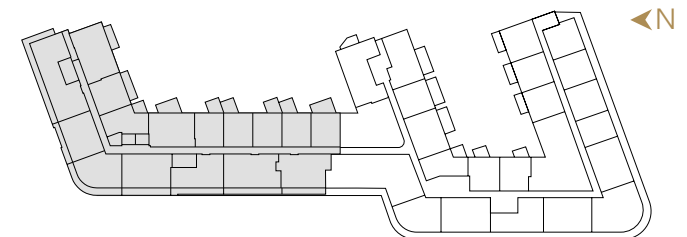
The developer reserves the right to make minor modifications or substitutions to building design, specifications, and floor plans if necessary to maintain the high standards of this community. Square footage estimates are based on surveyor's measurements and are approximate.

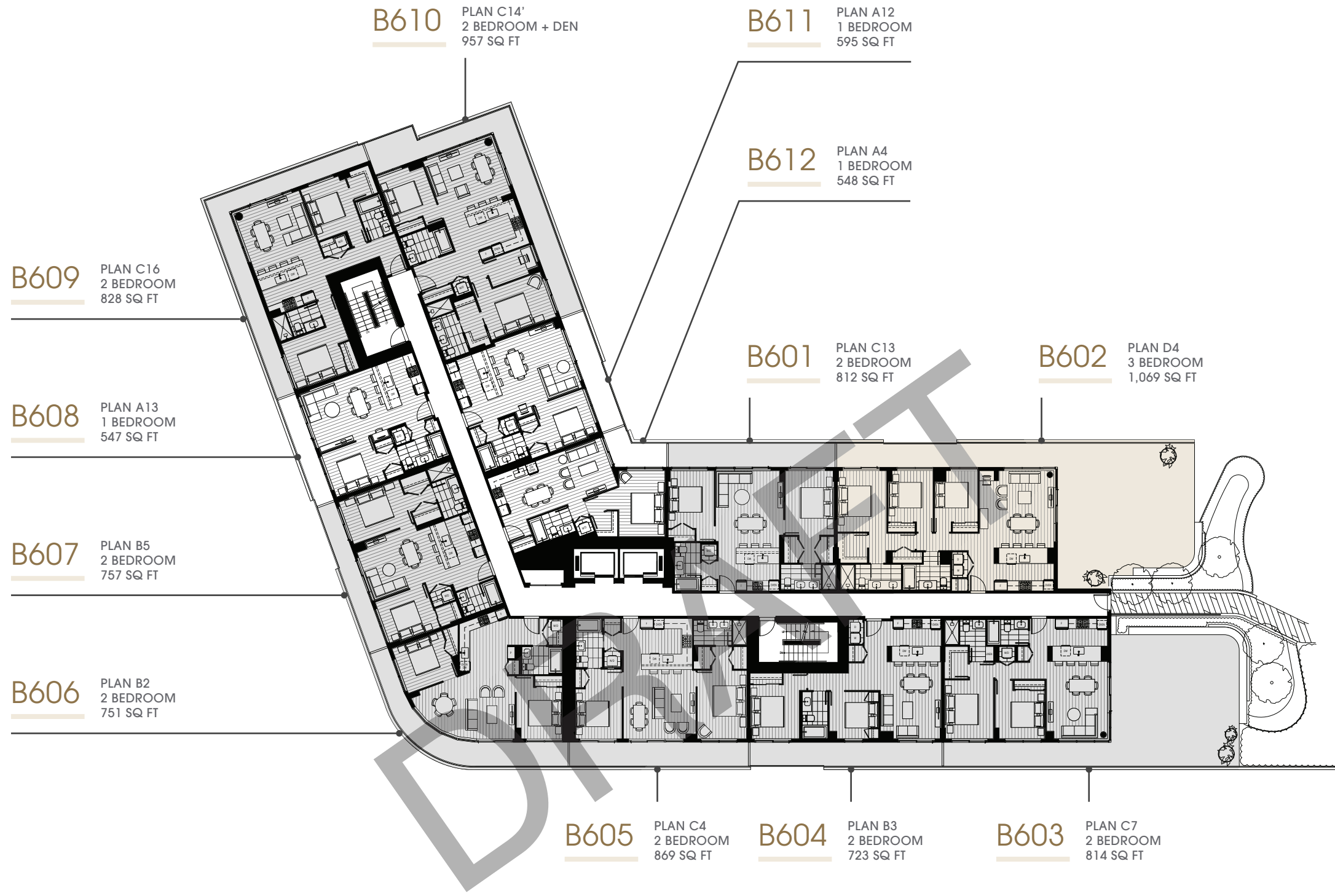




1 BEDROOM
  2 BEDROOM
  3 BEDROOM

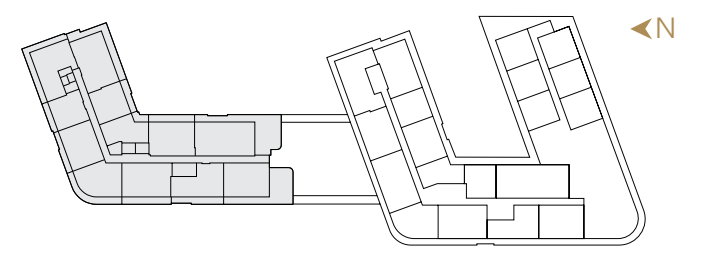
The developer reserves the right to make minor modifications or substitutions to building design, specifications, and floor plans if necessary to maintain the high standards of this community. Square footage estimates are based on surveyor's measurements and are approximate.



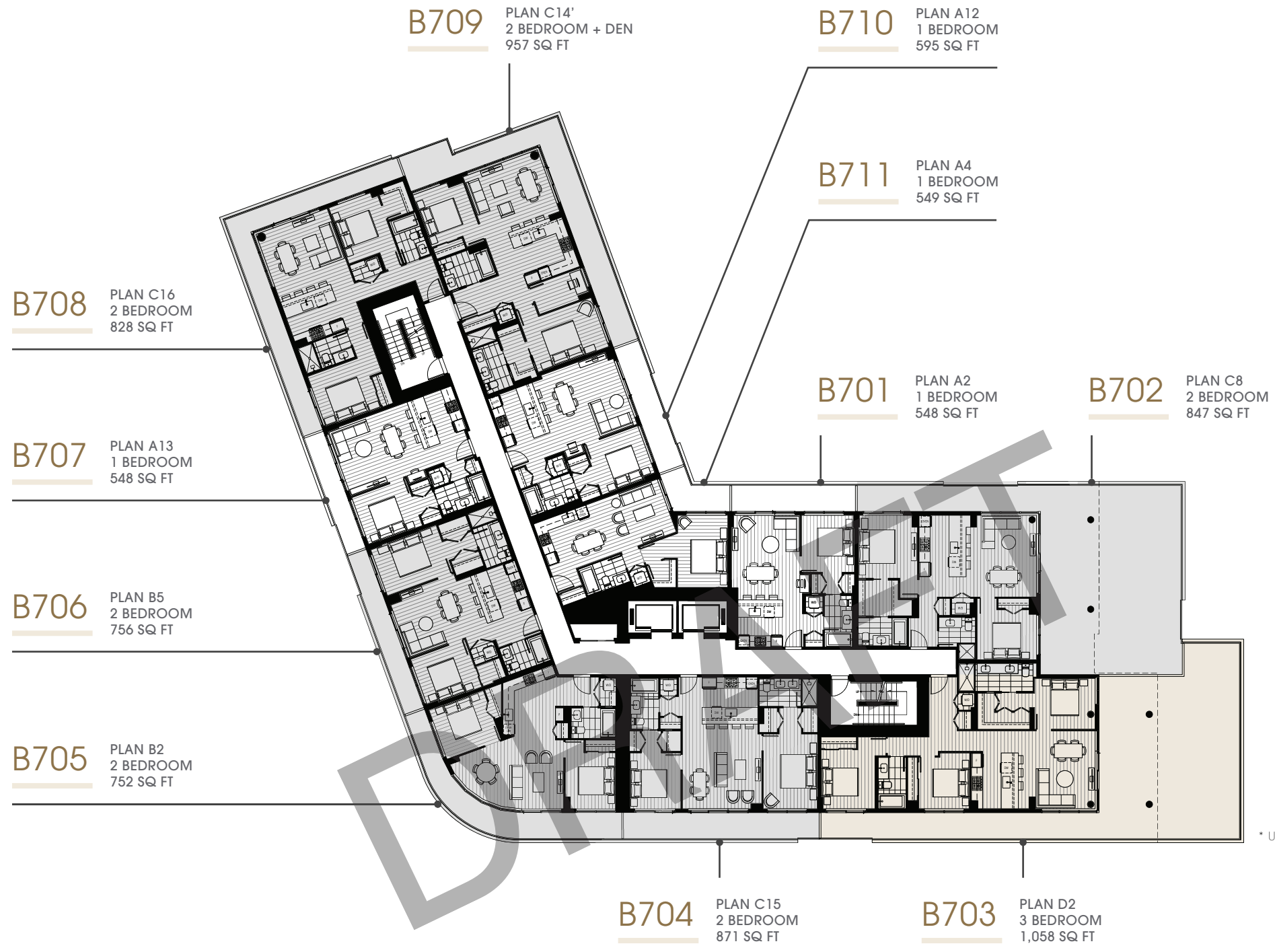


1 BEDROOM
  2 BEDROOM
  3 BEDROOM

The developer reserves the right to make minor modifications or substitutions to building design, specifications, and floor plans if necessary to maintain the high standards of this community. Square footage estimates are based on surveyor's measurements and are approximate.



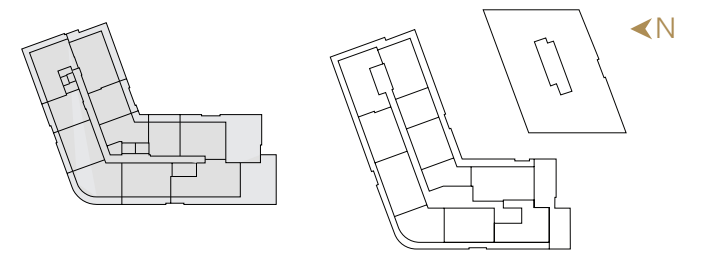




\* Unit square footage may varies by floors.



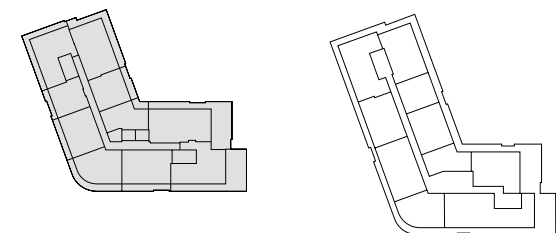
The developer reserves the right to make minor modifications or substitutions to building design, specifications, and floor plans if necessary to maintain the high standards of this community. Square footage estimates are based on surveyor's measurements and are approximate.

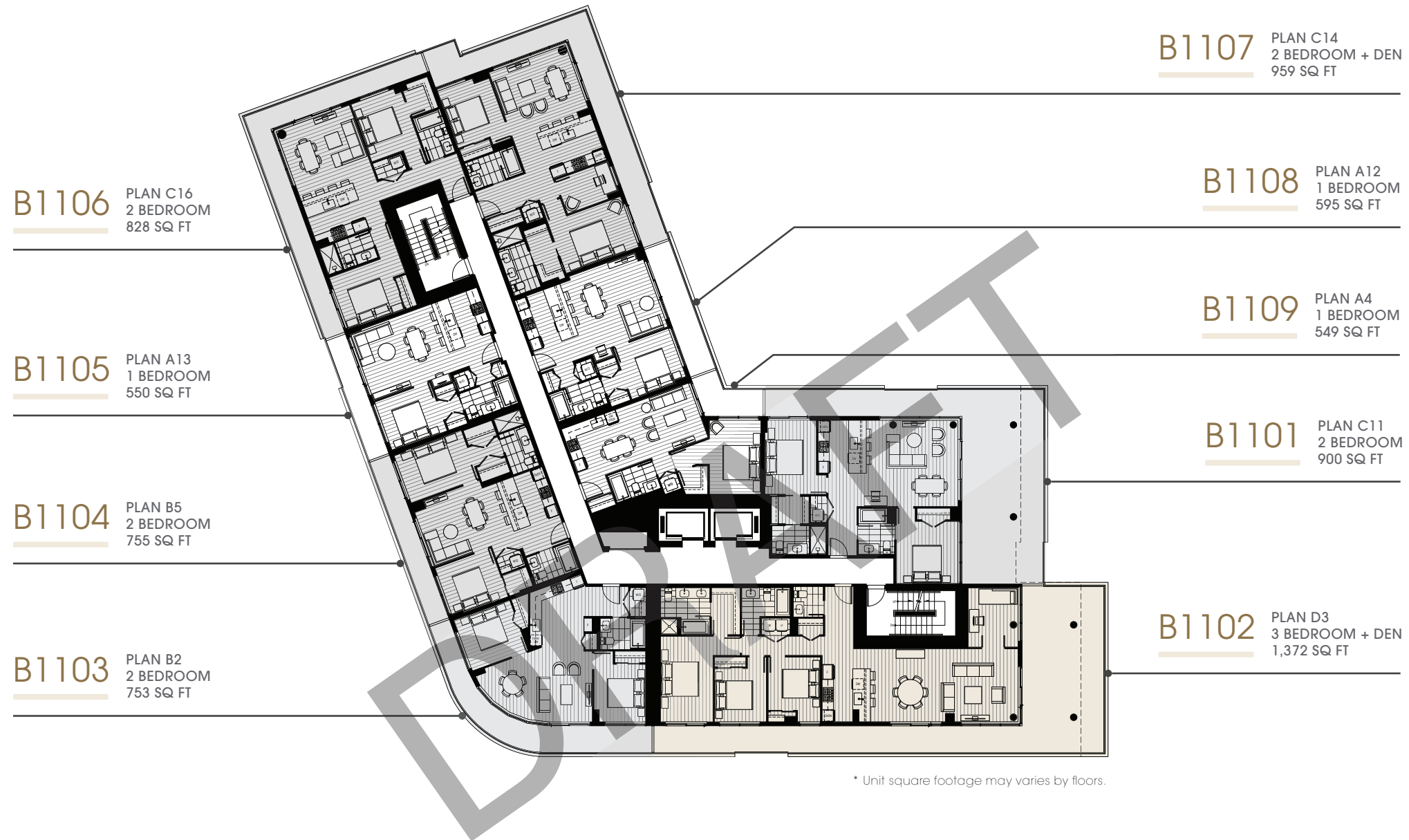




1 BEDROOM
  2 BEDROOM
  3 BEDROOM

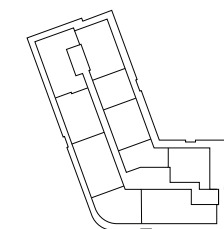
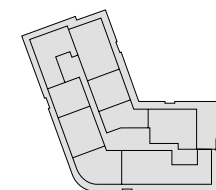
The developer reserves the right to make minor modifications or substitutions to building design, specifications, and floor plans if necessary to maintain the high standards of this community. Square footage estimates are based on surveyor's measurements and are approximate.

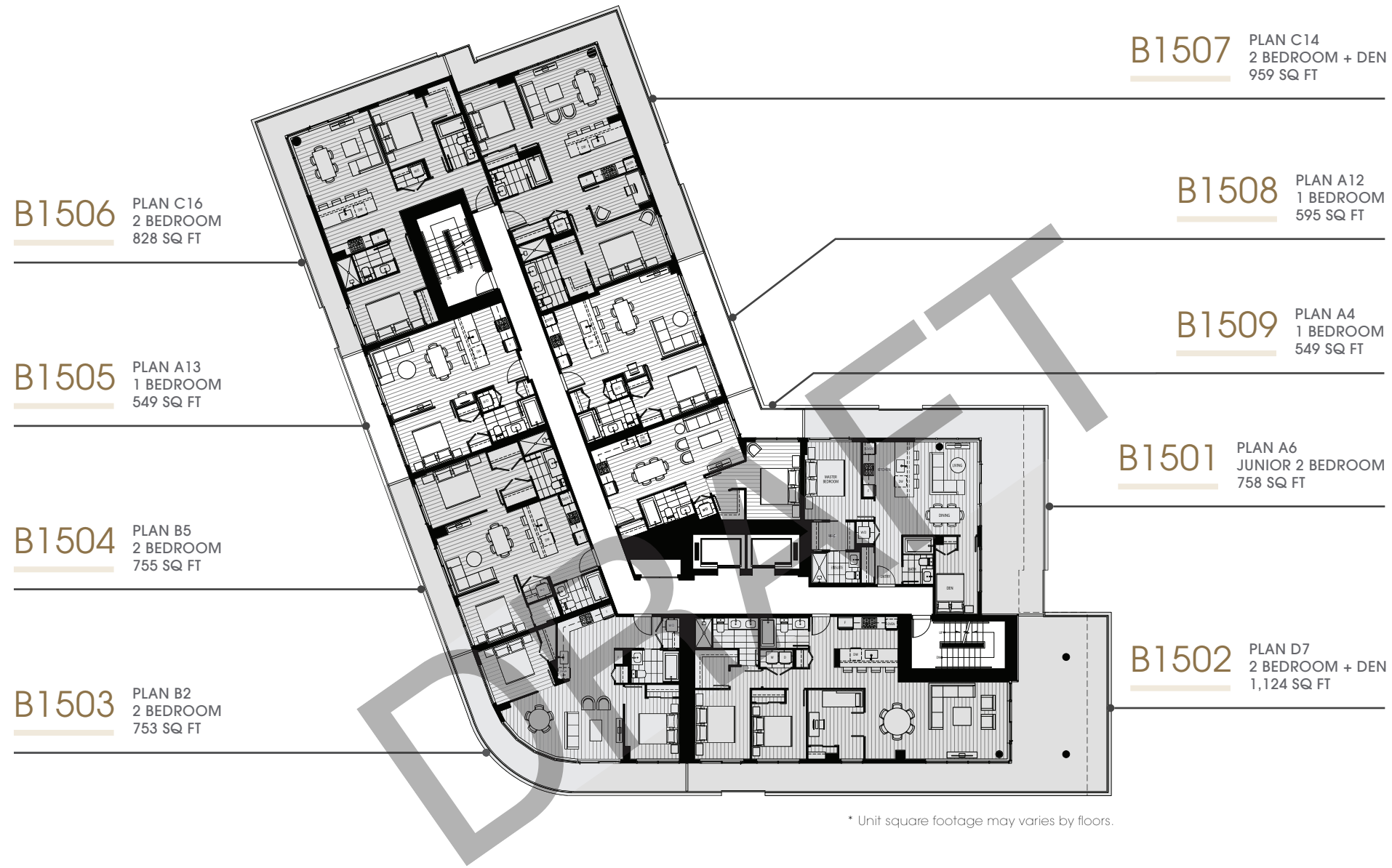




- 1 BEDROOM
- 2 BEDROOM
- 3 BEDROOM

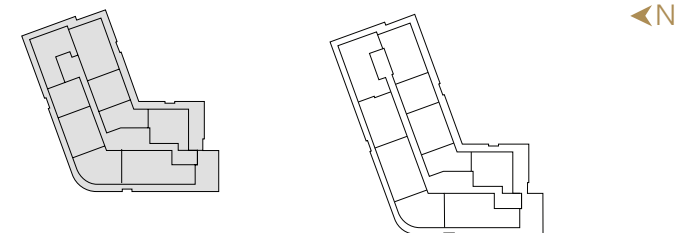
The developer reserves the right to make minor modifications or substitutions to building design, specifications, and floor plans if necessary to maintain the high standards of this community. Square footage estimates are based on surveyor's measurements and are approximate.

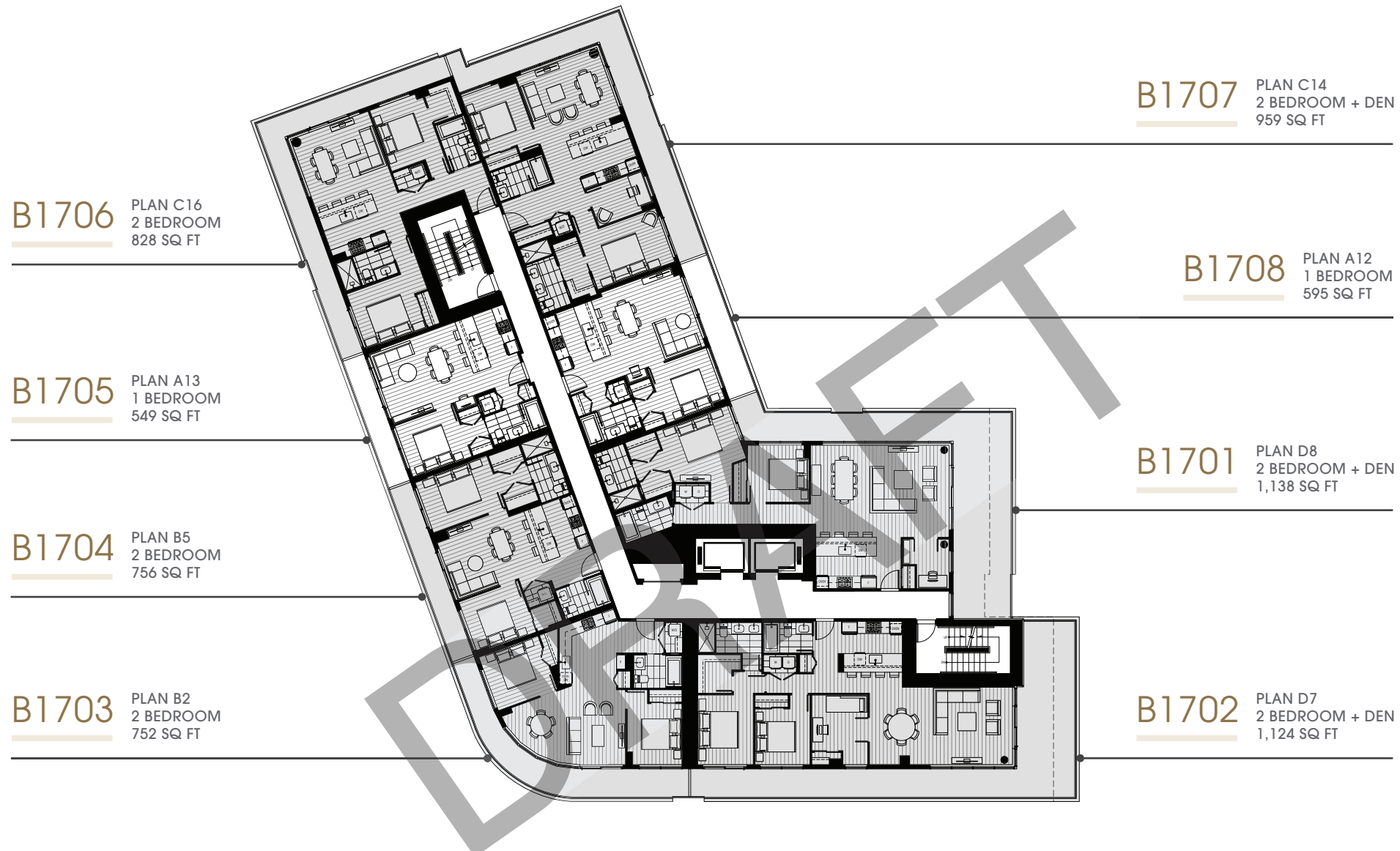




- 1 BEDROOM
- 2 BEDROOM
- 3 BEDROOM

The developer reserves the right to make minor modifications or substitutions to building design, specifications, and floor plans if necessary to maintain the high standards of this community. Square footage estimates are based on surveyor's measurements and are approximate.





- 1 BEDROOM
- 2 BEDROOM
- 3 BEDROOM

The developer reserves the right to make minor modifications or substitutions to building design, specifications, and floor plans if necessary to maintain the high standards of this community. Square footage estimates are based on surveyor's measurements and are approximate.

