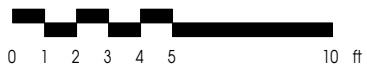


### PLAN B3'

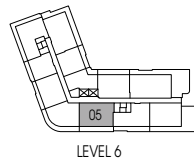
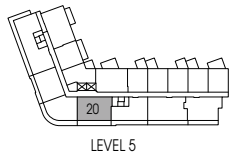
2 BEDROOM, 1 BATH  
 INDOOR: 705 SF  
 OUTDOOR: 247 SF





\*Please refer to key plan for balcony variations

\*Universally accessible home

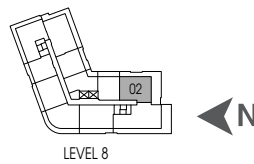
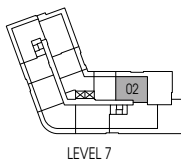


## PLAN C4

2 BEDROOM, 2 BATH  
 INDOOR: 866 SF  
 OUTDOOR: 167 - 171 SF



\*Please refer to key plan for balcony variations

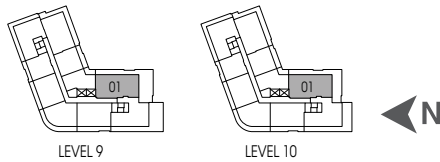
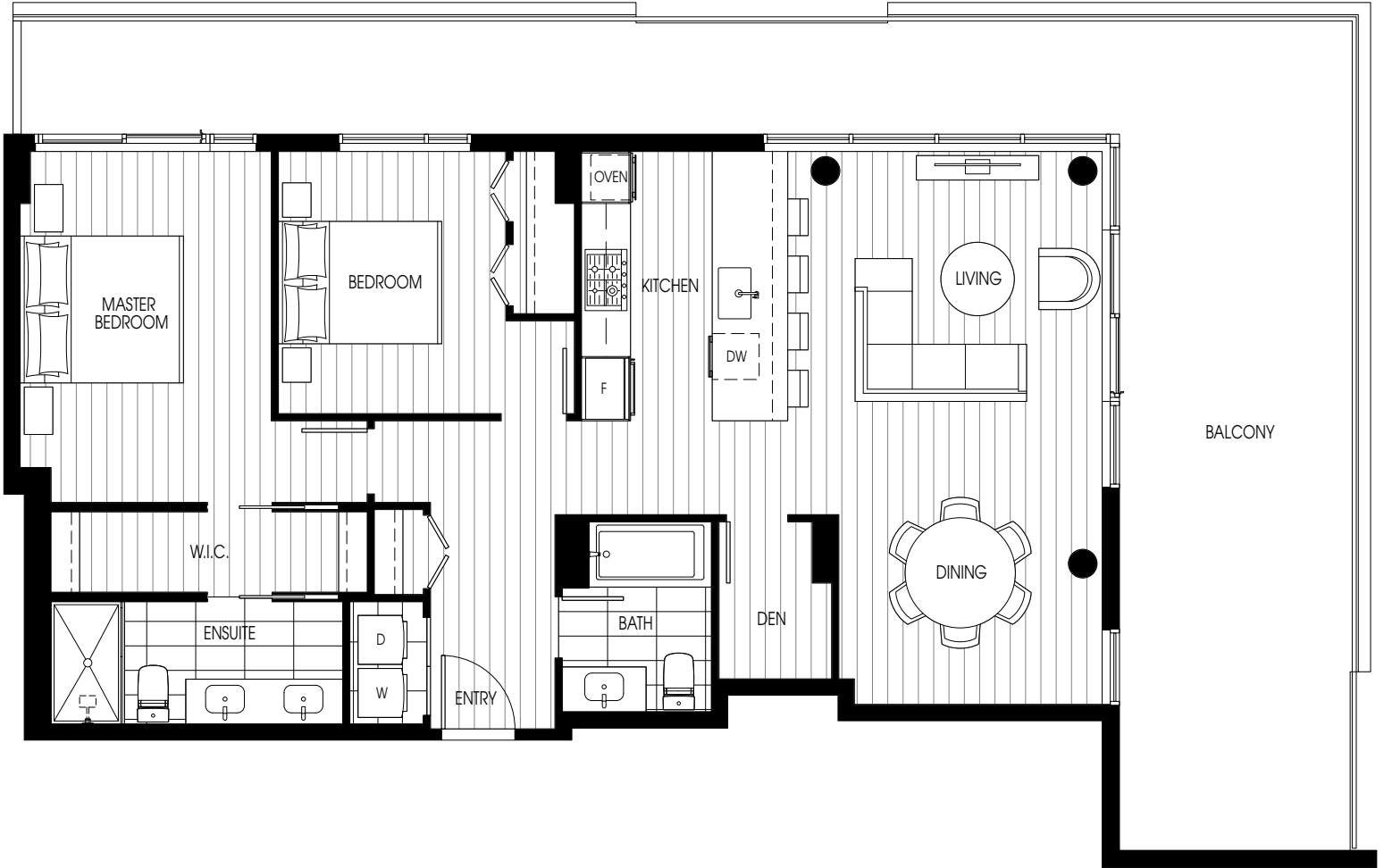


### PLAN C8

2 BEDROOM, 2 BATH  
INDOOR: 849 SF  
OUTDOOR: 496 - 1,026 SF



\*Please refer to key plan for balcony variations



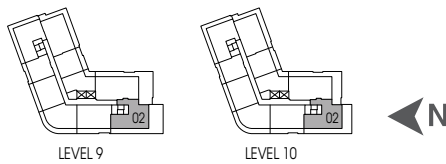
### PLAN C9

2 BEDROOM & DEN, 2 BATH  
INDOOR: 1,075 SF  
OUTDOOR: 545 - 708 SF





\*Please refer to key plan for balcony variations

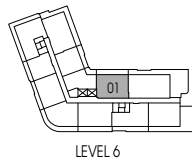
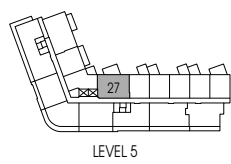
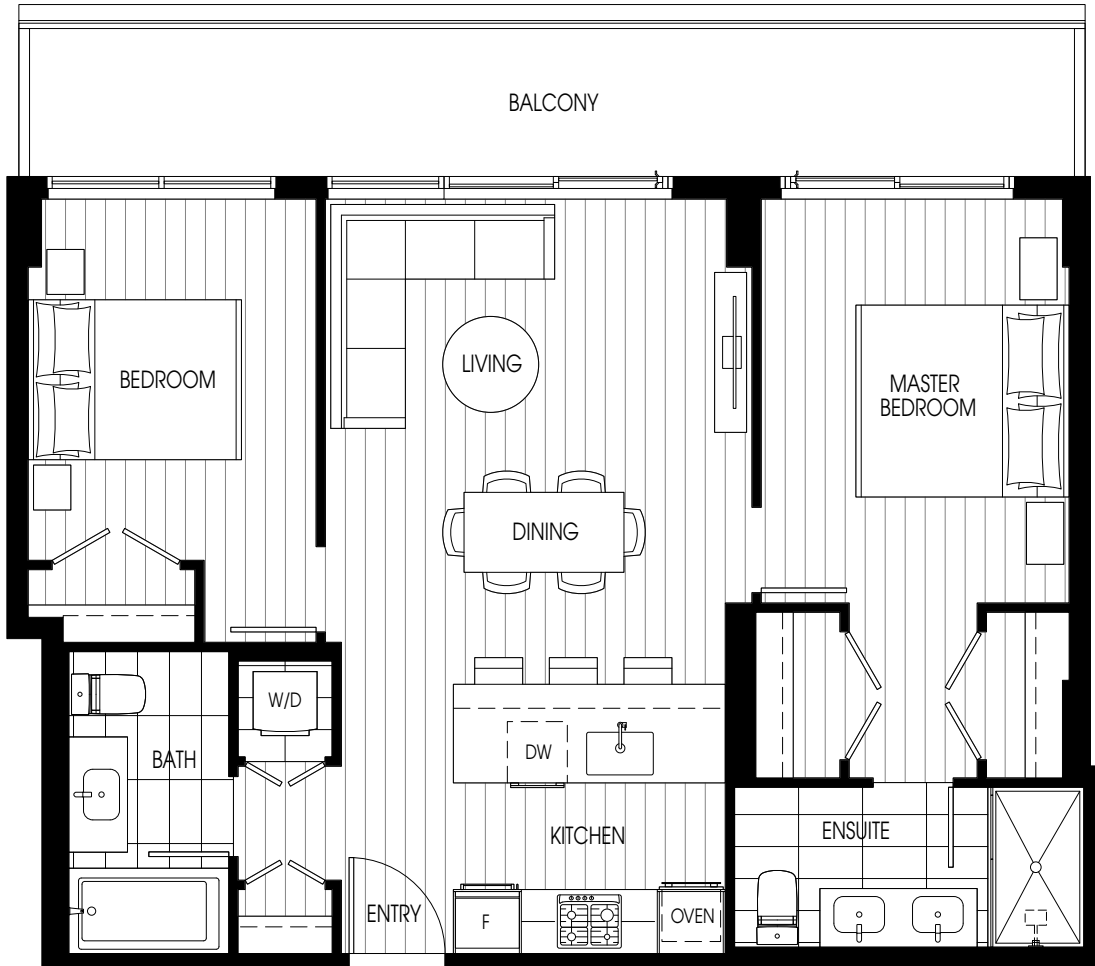


### PLAN C10

2 BEDROOM, 2 BATH  
 INDOOR: 898 - 899 SF  
 OUTDOOR: 473 - 611 SF



\*Please refer to key plan for balcony variations

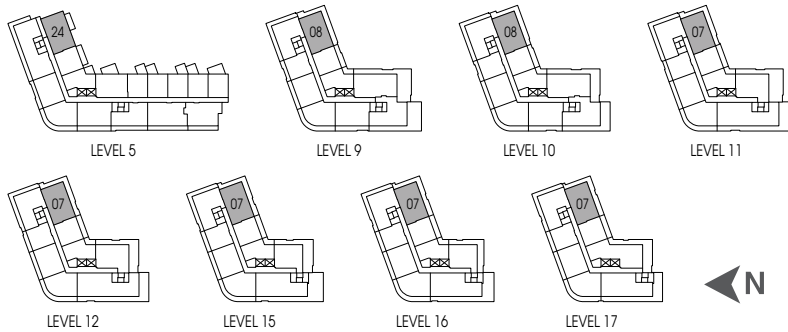
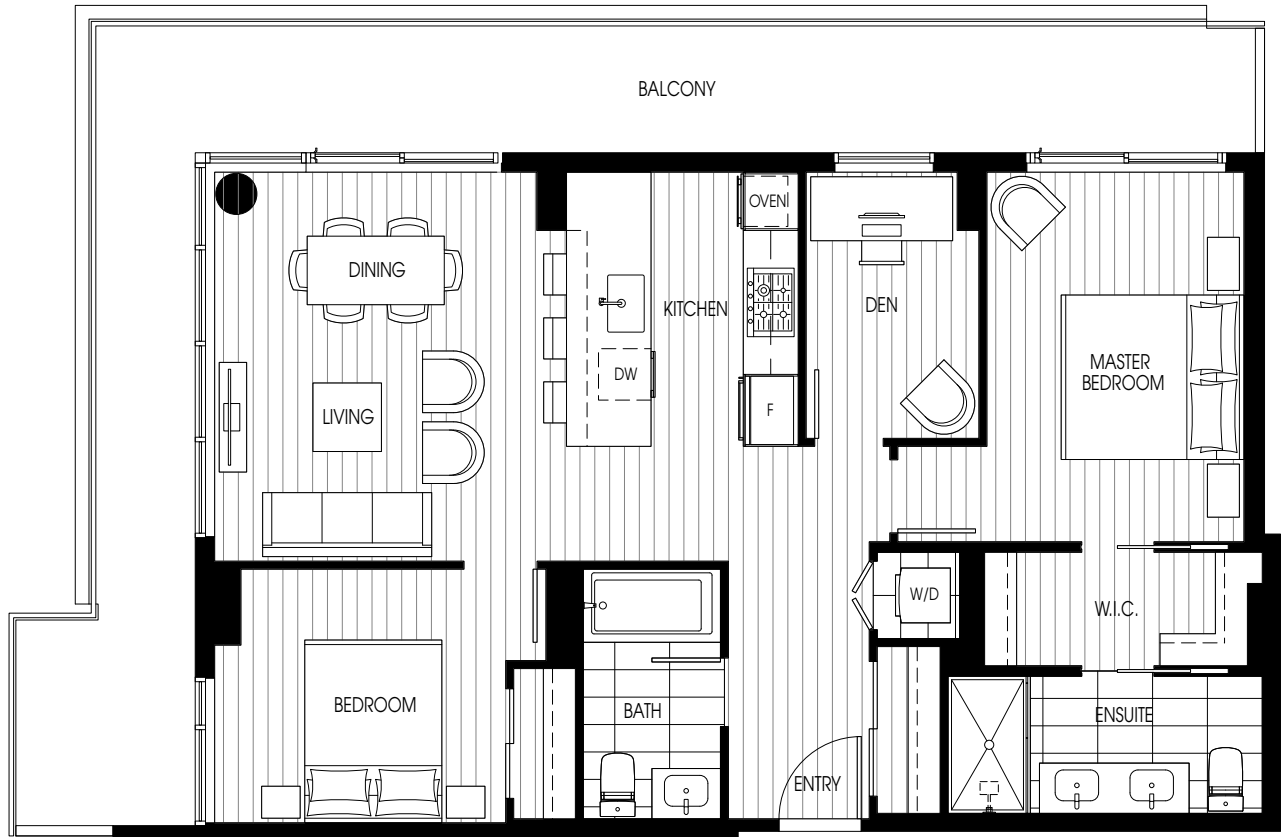


## PLAN C13

2 BEDROOM, 2 BATH  
INDOOR: 811 - 812 SF  
OUTDOOR: 144 - 178 SF



\*Please refer to key plan for balcony variations



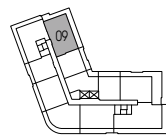
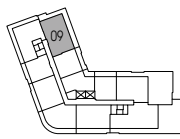
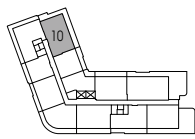
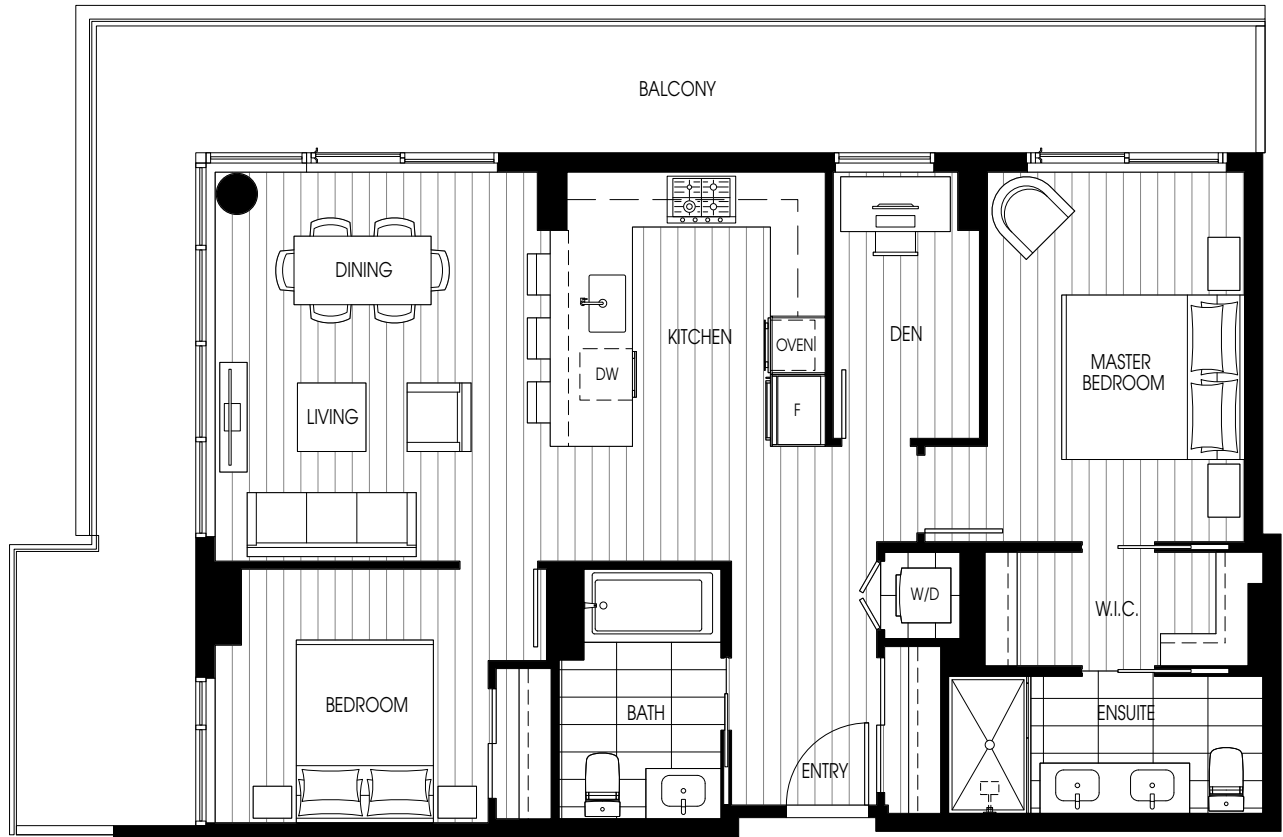
## PLAN C14

2 BEDROOM & DEN, 2 BATH  
 INDOOR: 959 - 968 SF  
 OUTDOOR: 103 - 362 SF



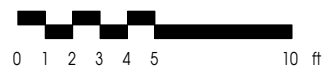
\*Please refer to key plan for balcony variations

\*Universally accessible home

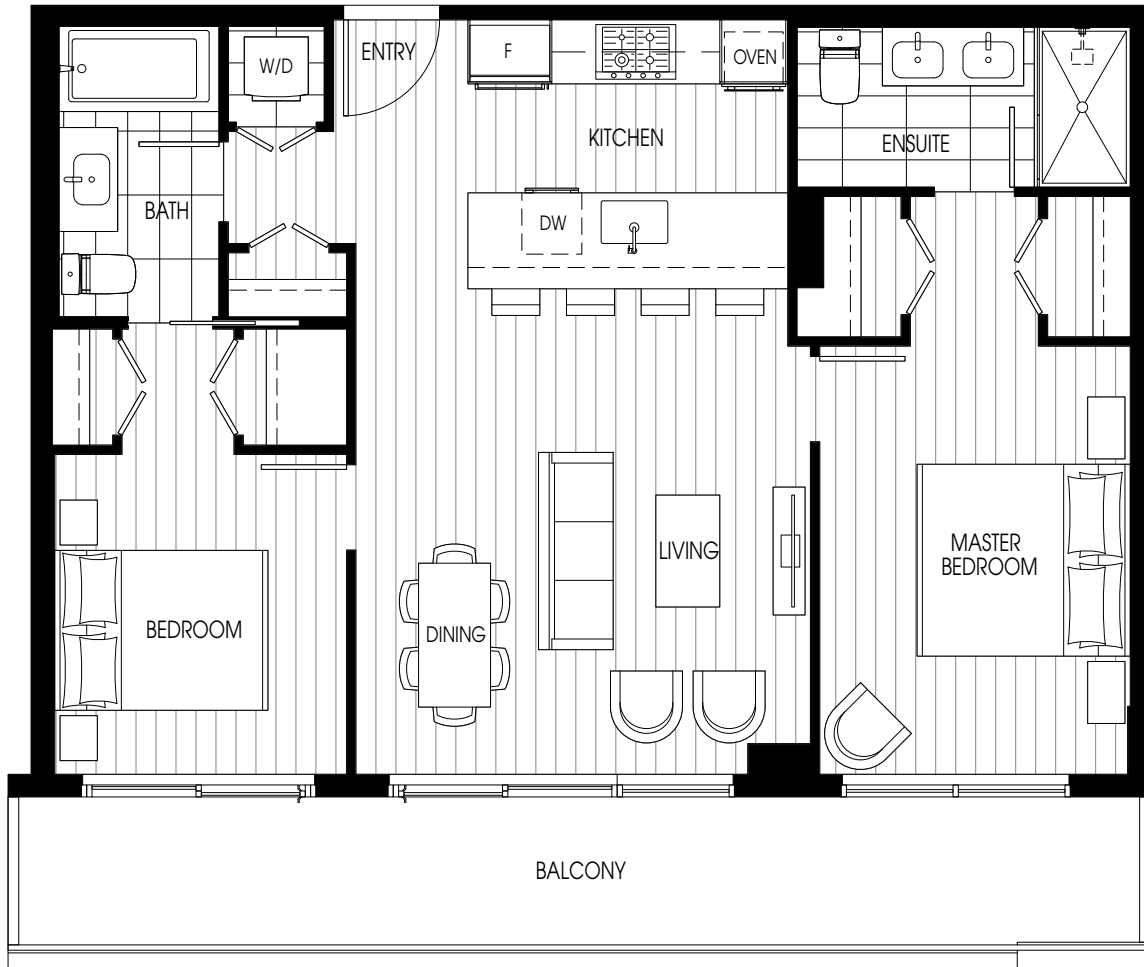


### PLAN C14'

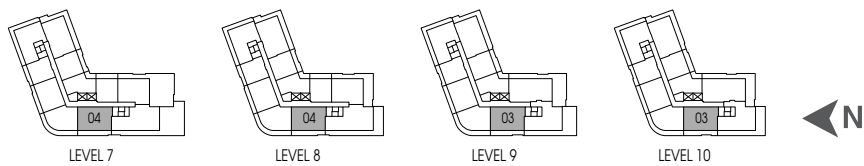
2 BEDROOM & DEN, 2 BATH  
INDOOR: 957 SF  
OUTDOOR: 324 - 328 SF







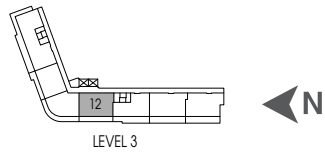
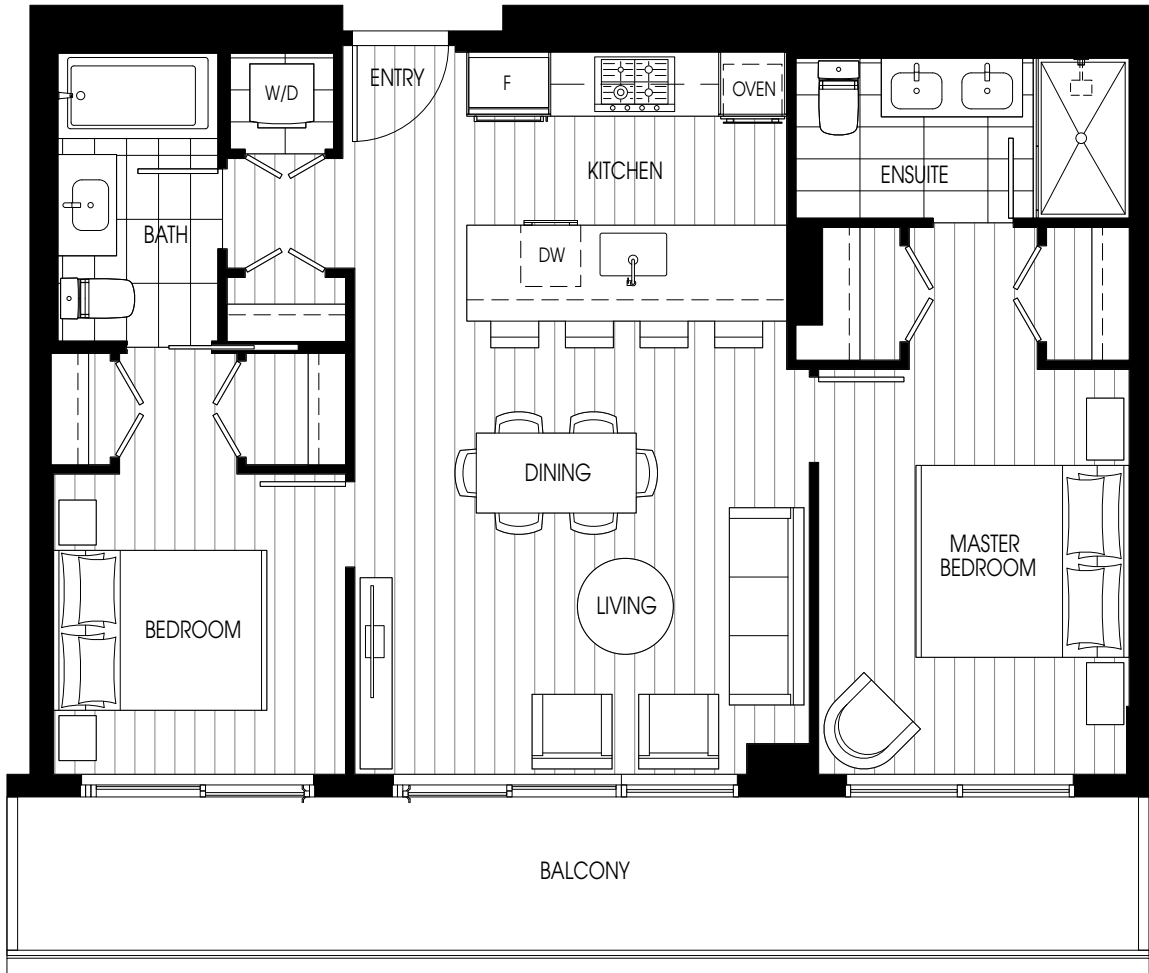
\*Please refer to key plan for balcony variations



### PLAN C15

2 BEDROOM, 2 BATH  
 INDOOR: 869 - 871 SF  
 OUTDOOR: 169 SF





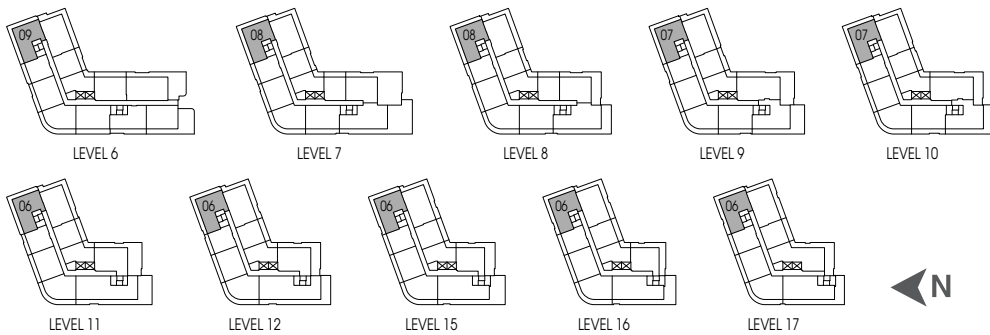
**PLAN C15'**

2 BEDROOM, 2 BATH  
 INDOOR: 869 SF  
 OUTDOOR: 175 SF





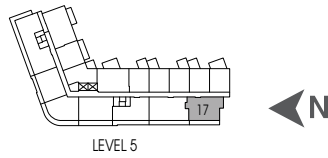
\*Please refer to key plan for balcony variations



### PLAN C16

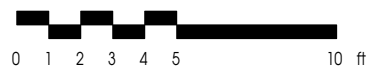
2 BEDROOM, 2 BATH  
 INDOOR: 826 - 828 SF  
 OUTDOOR: 266 - 269 SF





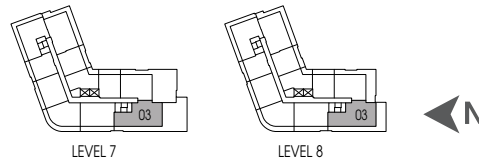
## PLAN C17

2 BEDROOM & DEN, 2 BATH  
 INDOOR: 870 SF  
 OUTDOOR: 150 SF





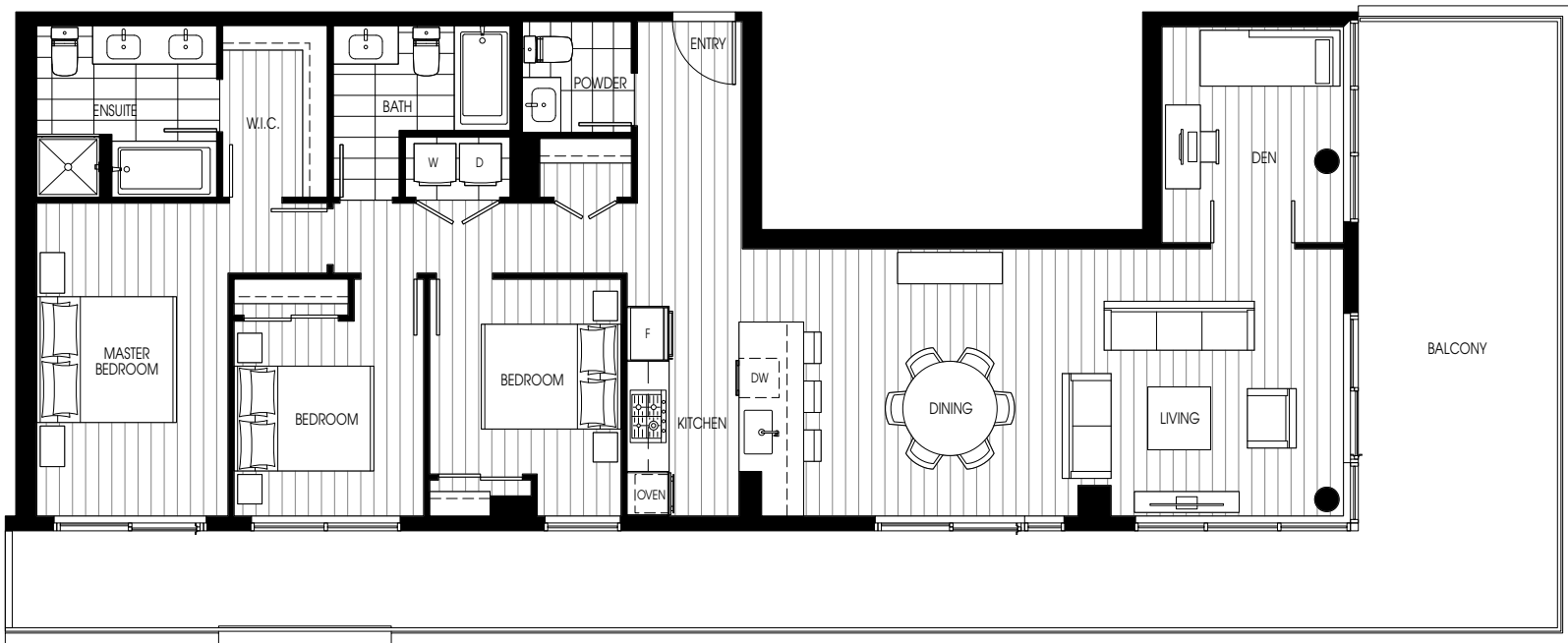
\*Please refer to key plan for balcony variations



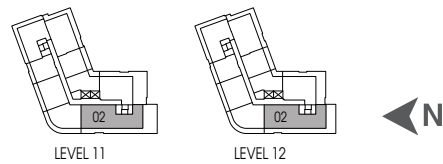
## PLAN D2

3 BEDROOM, 2 BATH  
 INDOOR: 1,060 SF  
 OUTDOOR: 530 - 1,043 SF





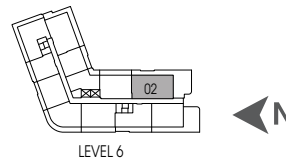
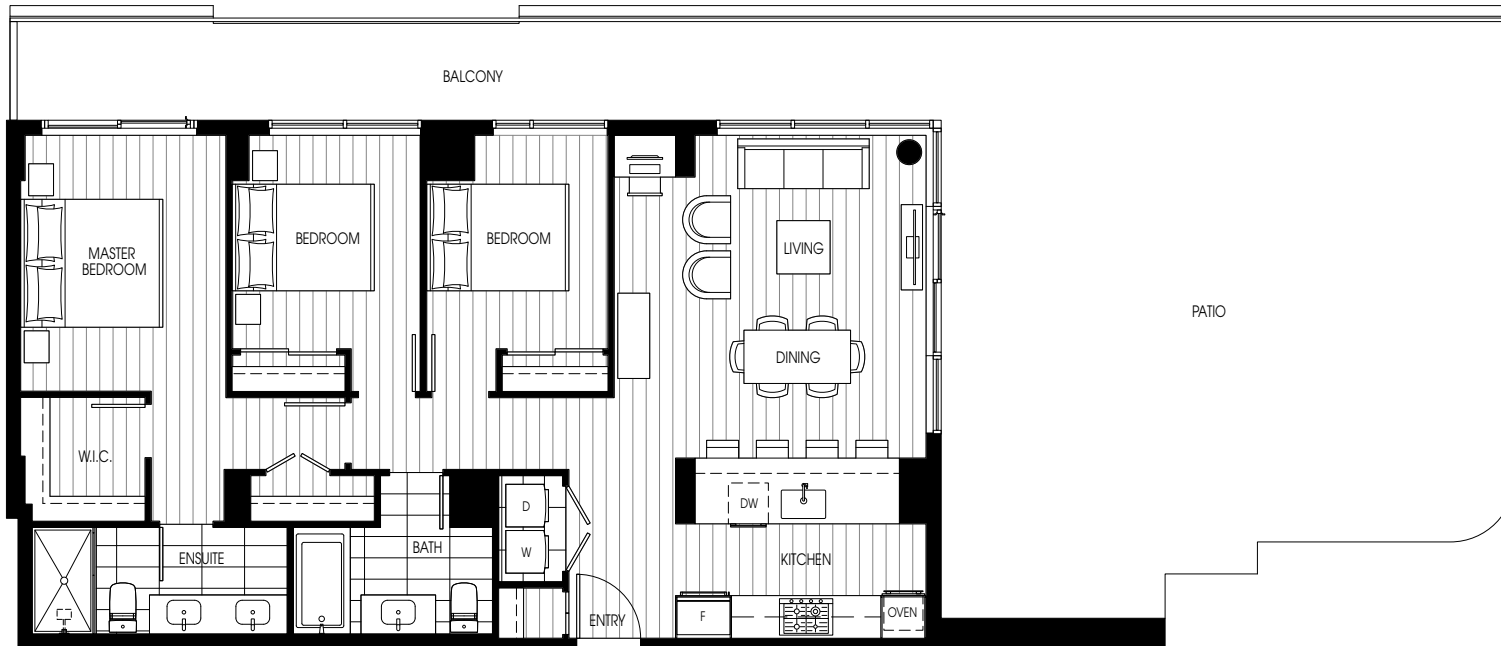
\*Please refer to key plan for balcony variations



### PLAN D3

3 BEDROOM & DEN, 2.5 BATH  
 INDOOR: 1,373 SF  
 OUTDOOR: 591 - 730 SF

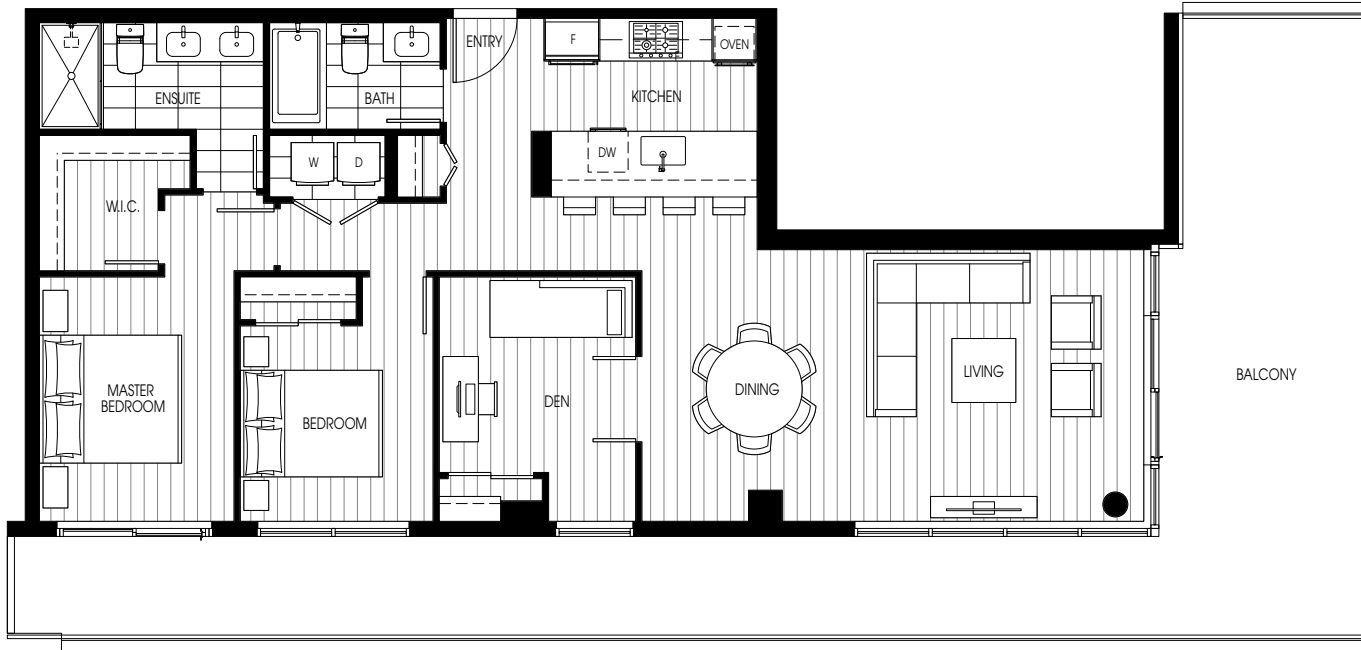




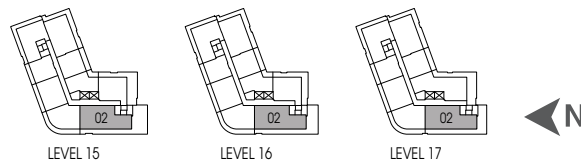
## PLAN D4

3 BEDROOM, 2 BATH  
 INDOOR: 1,069 SF  
 OUTDOOR: 916 SF





\*Please refer to key plan for balcony variations

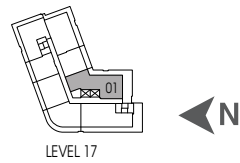


## PLAN D7

2 BEDROOM & DEN, 2 BATH  
 INDOOR: 1,123 - 1,124 SF  
 OUTDOOR: 532 - 715 SF



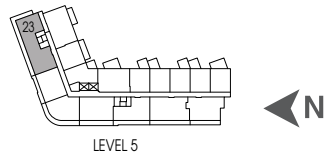
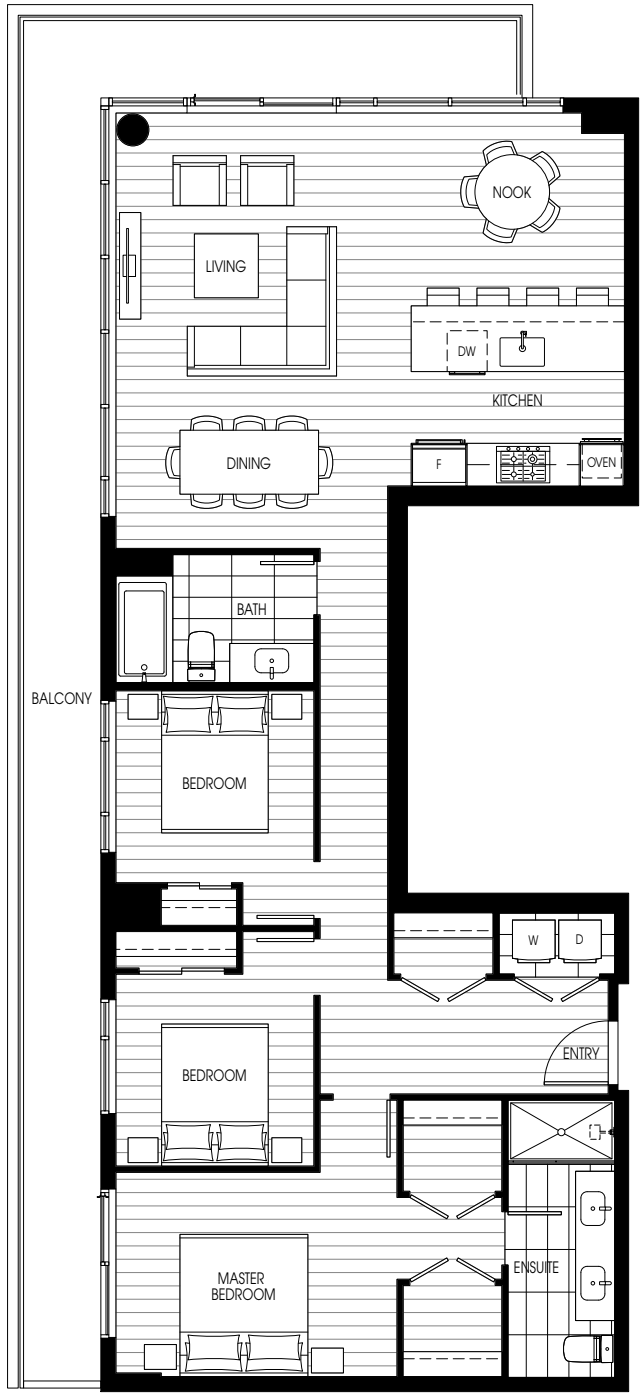




## PLAN D8

2 BEDROOM & DEN, 2 BATH  
 INDOOR: 1,138 SF  
 OUTDOOR: 513 SF



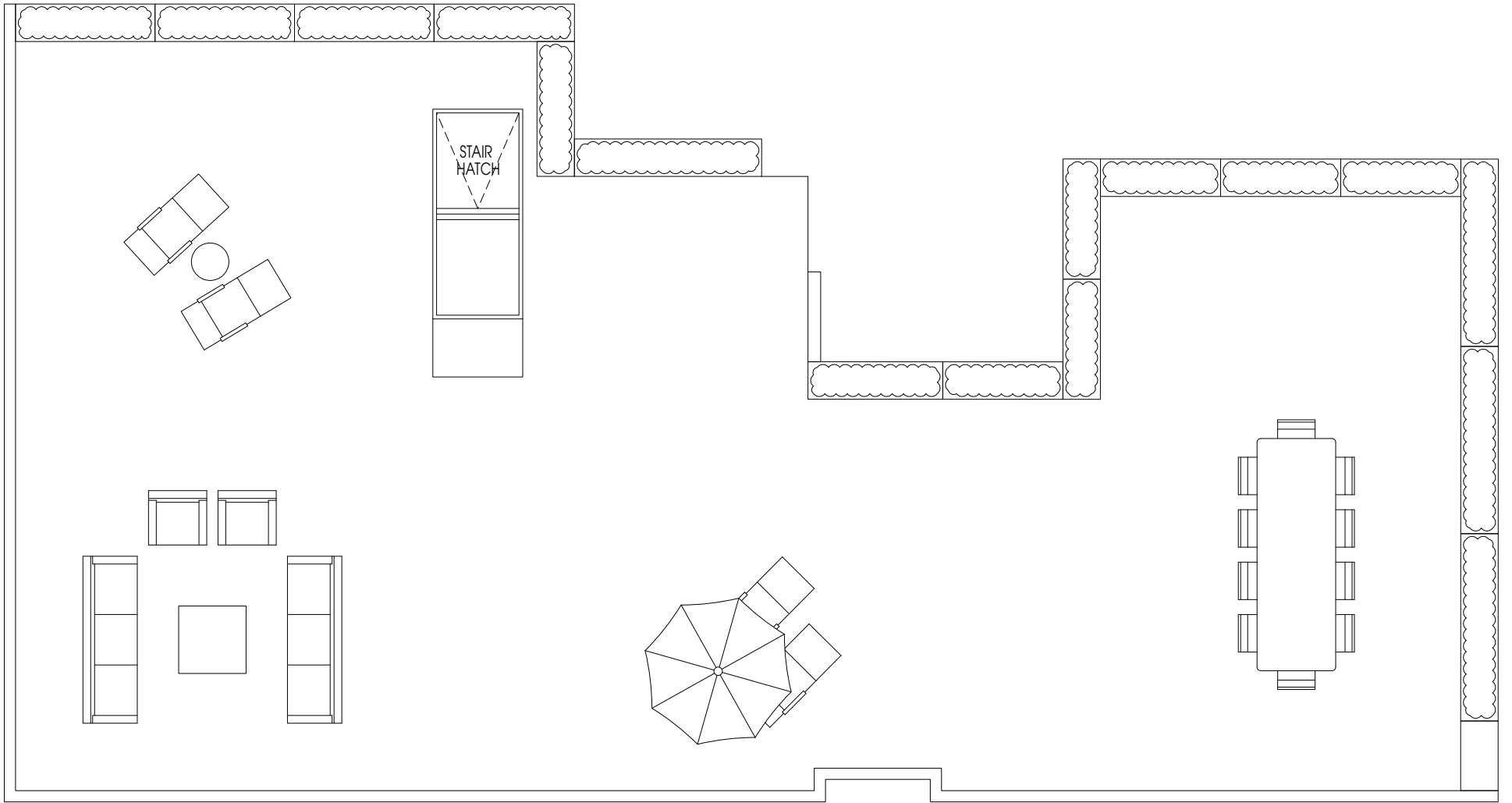


**PLAN D10**

3 BEDROOM, 2 BATH  
 INDOOR: 1,276 SF  
 OUTDOOR: 318 SF



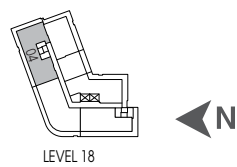
This is not an offering for sale. Illustrations are for marketing purposes only and may differ from finished product. The developer reserves the right to change or modify the offer, features, specifications and floorplans without prior notice. E&OE.



Roof Terrace

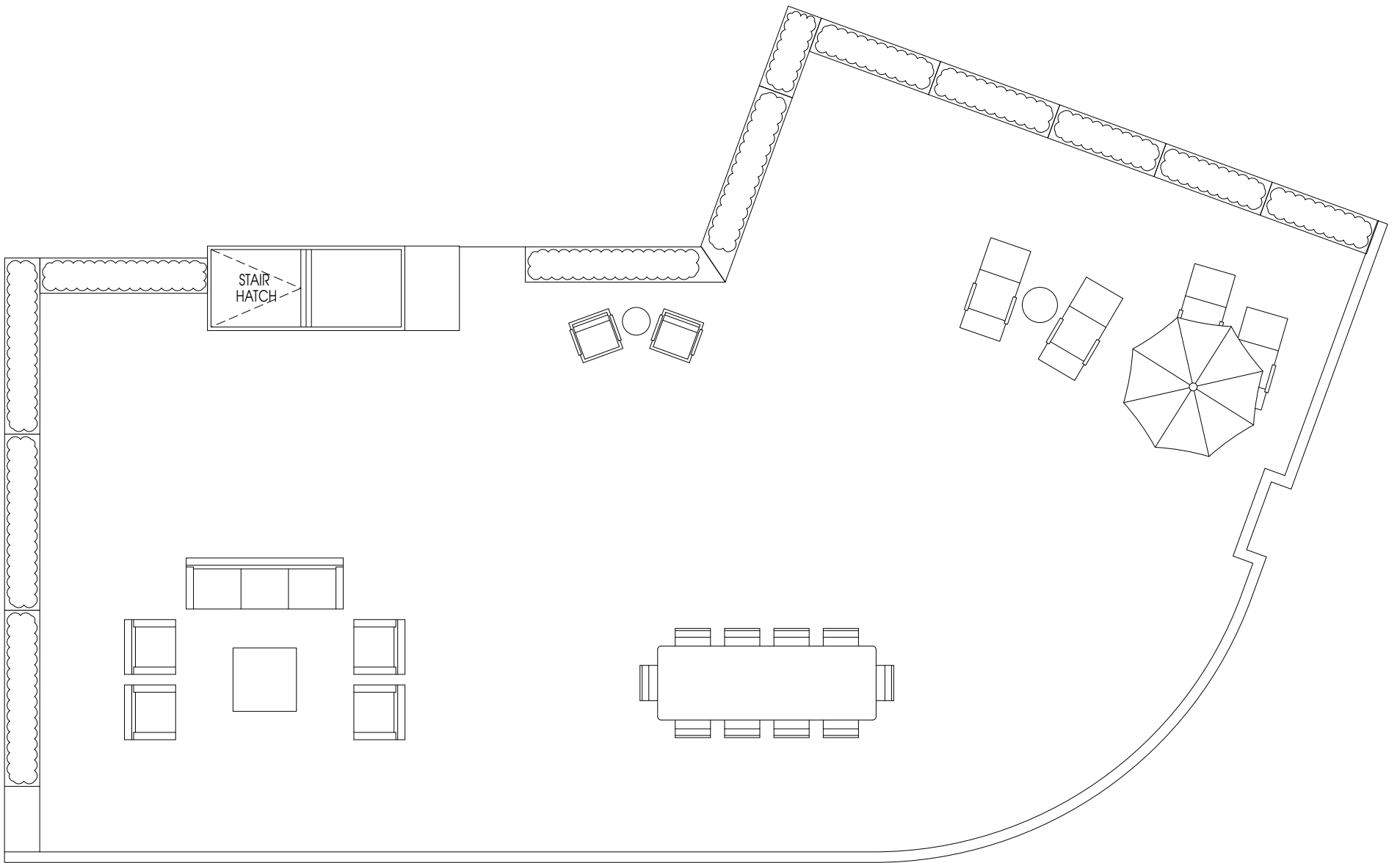


Level 18

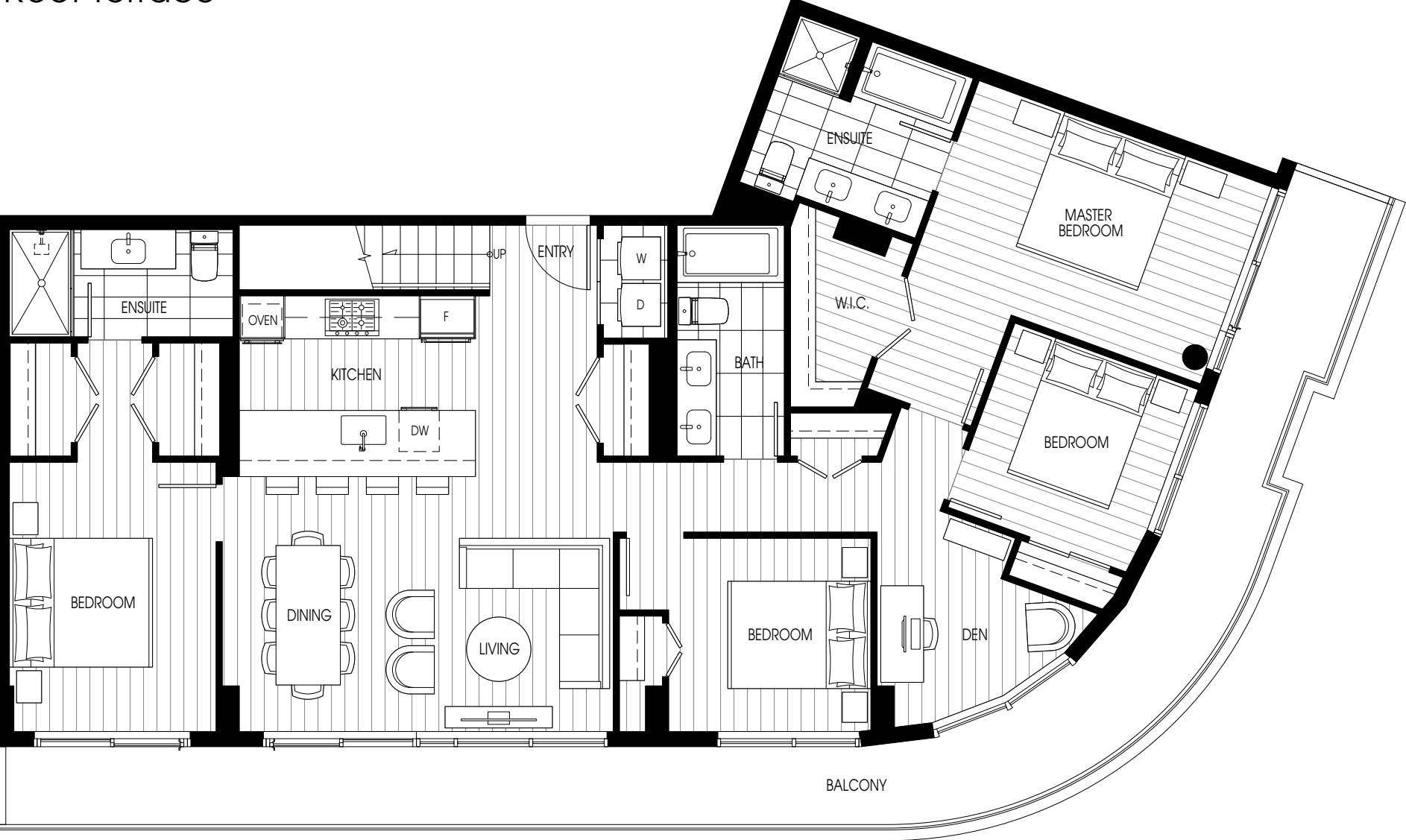


**PLAN PH10**  
 3 BEDROOM, 2 BATH  
 INDOOR: 1,378 SF  
 OUTDOOR: 2,075 SF

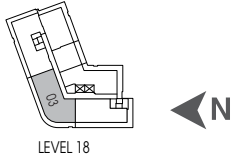




Roof Terrace



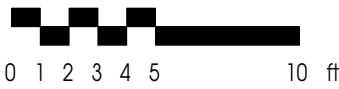
Level 18



Lorem ips



**PLAN PH11**  
 4 BEDROOM & DEN, 3 BATH  
 INDOOR: 1,506 SF  
 OUTDOOR: 2,131 SF



This is not an offering for sale. Illustrations are for marketing purposes only and may differ from finished product. The developer reserves the right to change or modify the offer, features, specifications and floorplans without prior notice. E&OE.