



AVIARY

RICHMOND CENTRE





|

Birds of a Feather Nested in the Centre

36 heritage-inspired townhomes where
vibrant Richmond Centre meets tranquil
neighbourhood living.



A timeless
expression of
sophisticated
design.



Envisioned by award-winning Formwerks, renowned for crafting incomparable, westside single-family homes, Aviary is a community of 36 Tudor-inspired townhomes in Richmond Centre. These select 2, 3 and 4-bedroom homes artfully weave the tranquil elegance

of exceptional architecture with the ease of modern amenities. From gabled roofs that reflect the cherished style of Vancouver's most sought-after neighbourhoods, to character-rich wood detailing and bay windows, Aviary is a cohesive, contemporary expression of classic style.

WESTSIDE STYLE TUCKED
AWAY IN THE HEART
OF RICHMOND.

Experience privacy and community



Homes at Aviary are a fresh reinterpretation of traditional mews. Landscaped private patios and courtyards surround your own front door, while dark-sky certified LED lighting provides safety on star-filled nights.

01

DINING ZONE WITH BARBECUE AREA, FOR FRIENDS AND FAMILY TO COME TOGETHER.

02

CAREFULLY DESIGNED PLAY AREAS FOR CHILDREN, WITH SEATING FOR PARENTS.

03

INTERIOR AMENITIES INCLUDE AN EXPANSIVE COMMUNITY KITCHEN.

04

NATIVE LANDSCAPING CREATES A PARK-LIKE ATMOSPHERE.

Your family's
nest — tranquil,
secure, spacious.



The interiors at Aviary are proudly crafted by Studio Kardum. Over-height, 9-foot ceilings throughout the main floor create an airy, light-filled living environment. Exceptional design extends to the selection of features in the gourmet kitchen. From stainless-steel

appliances and engineered quartz countertops to distinctive porcelain tiled backsplash and dual-tone flat panel cabinetry, the living spaces reflect the perfect balance of contemporary styling and timeless inspiration.

01

SOPHISTICATED, INTUITIVELY PLANNED KITCHENS ARE PERFECTLY BALANCED FOR WELCOMING FRIENDS AND SPENDING TIME WITH FAMILY.

02

A FULL CHEF'S KITCHEN INCLUDES A WOK COOKTOP, 36" WIDE REFRIGERATOR, MICROWAVE, AND WALL OVEN.

03

THE REFINED FEEL IS A STATEMENT FOR THOSE WHO APPRECIATE THE VALUE OF THOUGHTFUL DESIGN.



WARM, CALMING INTERIORS
INSPIRE RELAXATION.

The thoughtful design of Avary extends throughout the interiors where materials inspired by natural textures are the perfect backdrop for your personal style. The airy, master retreat has an expansive, walk-in closet for ample storage.

The attention to detail continues to the ensuite bathroom that feels like your own personal spa, with double Kohler sinks, wood cabinets, Corian solid-surface countertops and a rain shower. The interiors are a nod to the classic elegance of elevated design.

Graceful, organic, contemporary interiors define the master retreat.

BATHROOMS CREATED
TO PAMPER AND SOOTHE.





Find Your Sanctuary in the Centre

Stay connected to the amenities
you need in the quiet retreat of the cozy
neighbourhood you love.





GLOBAL BRANDS AND LOCAL SHOPS ARE A SHORT WALK AWAY.

The ideal blend of tranquility and accessibility.

FROM CASUAL DRINKS TO FINE DINING, THE CHOICE IS YOURS.



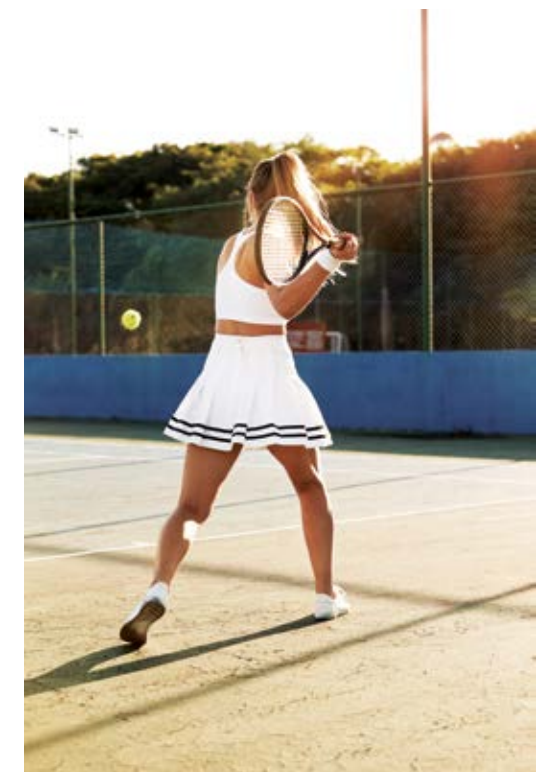
Aviary's incomparable location is just minutes from Richmond Centre and its exclusive shopping and wealth of dining options. And with easy access to the Canada Line, you are minutes to YVR and all that downtown Vancouver offers.

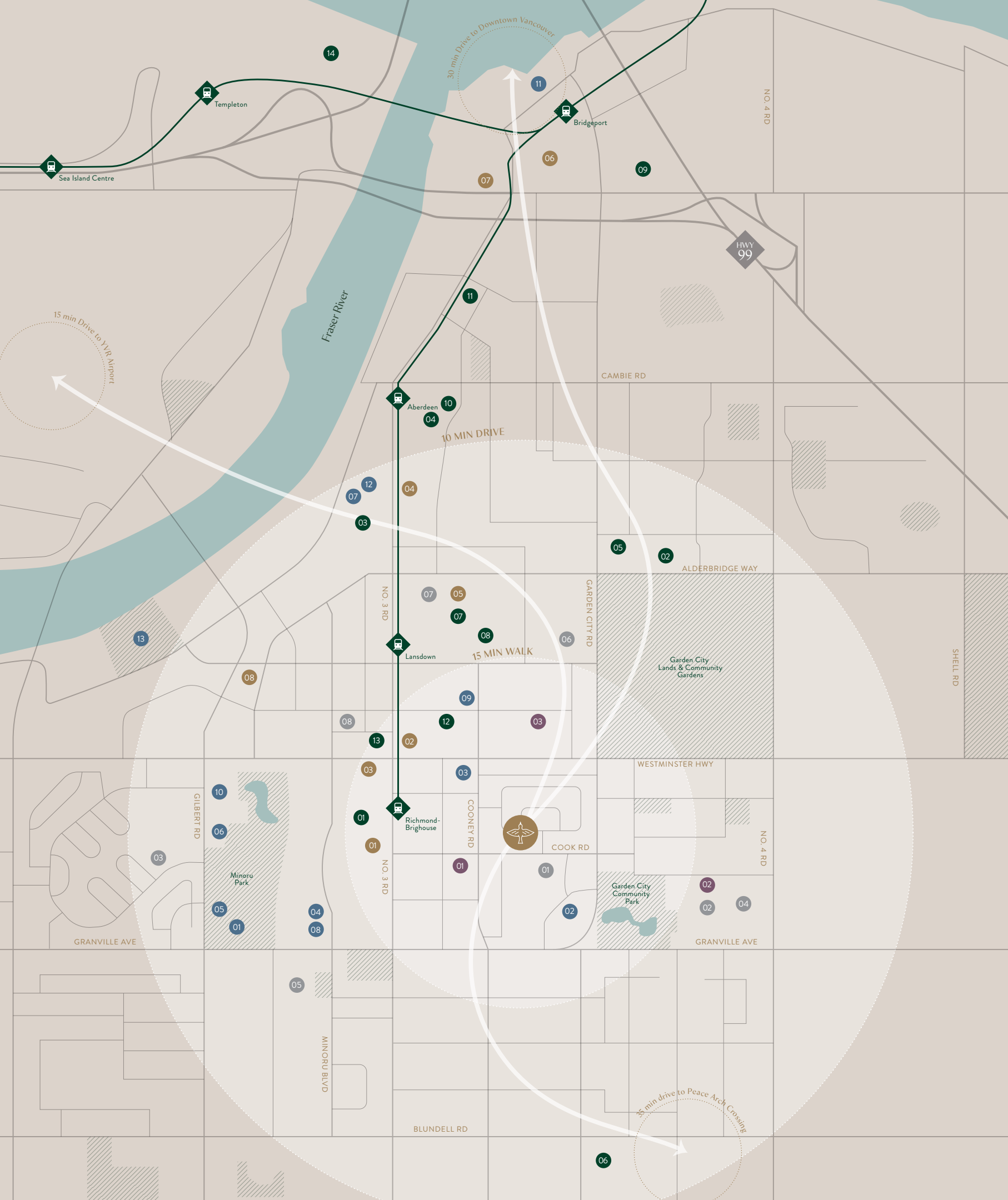


PARKS AND GREENSPACE AROUND IN THE NEIGHBOURHOOD.

Experience, peaceful, neighbourhood living tucked away in a sought-after location just a short stroll from the vibrancy of Richmond Centre. Only two blocks from Garden City Arboretum, Aviary is close to nature and meandering paths, perfect for time spent together. William Cook Elementary School is just around the corner, making Aviary ideal for family living.

ENJOY LOCAL TENNIS COURTS AND OTHER SPORTS.





A hidden gem near Richmond Centre.

This leafy enclave is in the centre of all that makes Richmond so sought-after. From expansive greenspace to world-class dining and shopping, Aviri is located where your life can take flight.

SHOPPING

- 01 CF Richmond Centre
- 02 Walmart Supercentre
- 03 Real Canadian Superstore
- 04 H-Mart Richmond
- 05 Central at Garden City
- 06 Garden City Shopping Centre
- 07 Lansdowne Centre
- 08 T&T Supermarket
- 09 Costco Wholesale
- 10 Aberdeen Centre
- 11 Canadian Tire
- 12 PriceSmart Foods
- 13 London Drugs
- 14 McArthurGlen Designer Outlet

CHILDCARE

- 01 Cook Road Children's Center
- 02 Windmill Children's House
- 03 Ackroyd Children's Learning Centre

EDUCATION

- 01 William Cook Elementary School
- 02 Henry Anderson Elementary School
- 03 Samuel Brighthouse Elementary
- 04 A.R. MacNeill Secondary School
- 05 Richmond Secondary School
- 06 Kwantlen Polytechnic University
- 07 Trinity Western University - Lansdown
- 08 Trinity Western University - Minoru

RECREATION & SERVICES

- 01 Minoru Centre for Active Living
- 02 Paddock Recreational Centre
- 03 Richmond Public Market
- 04 Richmond Library and Cultural Centre
- 05 Richmond Tennis Club
- 06 Gateway Theatre
- 07 Drive Badminton Centre
- 08 Richmond Art Gallery
- 09 Service Canada Centre
- 10 Richmond Hospital
- 11 River Rock Casino Resort
- 12 Elite Golf Club
- 13 Richmond Olympic Oval

RESTAURANTS

- 01 Cactus Club Cafe
- 02 HaiDiLao HotPot
- 03 Kirin Seafood Restaurant
- 04 Chef Tony Seafood Restaurant
- 05 Earls
- 06 The Story Cafe - Eatery & Bar
- 07 Bruno
- 08 Dinesty Dumpling House

✦ TERA

OUR HOMES ARE BUILT FOR FAMILIES BY FAMILIES. WE FOUNDED TERA DEVELOPMENTS TO SERVE THOSE WHO APPRECIATE THAT QUALITY HOMES GO BEYOND THE PHYSICALITIES; ITS ESSENCE IS FOUND IN ITS FUNCTIONALITY.

Our craft is creating spaces that convey our values—homes that are defined by family, wellness, and balance.

SINCE 1988, FORMWERKS HAS BEEN PROUDLY DESIGNING AWARD-WINNING HOMES THAT EMBODY ARCHITECTURAL AND DESIGN INTEGRITY AS WELL AS AUTHENTICITY.

FORMWERKS
ARCHITECTURAL

STUDIO KARDUM IS A VANCOUVER-BASED DESIGN STUDIO WITH A CONSIDERATE AND THOUGHTFUL APPROACH, INSPIRED BY THE PROJECT AND THE ENVIRONMENT.

Kardum

PMG ARCHITECTS IS RENOWNED FOR ITS LANDSCAPE DESIGN THAT CONNECTS PEOPLE TO THEIR COMMUNITY AND ENVIRONMENT THROUGH THE INTEGRATION OF FORM AND FUNCTION.

pmg
LANDSCAPE
ARCHITECTS

FOR NEARLY TWO DECADES, MACDONALD PLATINUM MARKETING HAS BEEN COLLABORATING WITH LEADING DEVELOPERS TO PROVIDE UNPARALLELED NEW HOME PURCHASE EXPERIENCES.

Macdonald
PLATINUM MARKETING



AVIARYLIVING.CA

778.792.2099
INFO@AVIARYLIVING.CA

This is not an offering for sale. Any such offering may only be made by way of a Disclosure Statement. The Developer reserves the right to modify or make substitutions to the Building design, dimensions, sizes, materials, specifications and floor plans without notice. Pricing, renderings, views, measurements, and layouts are approximate and for illustration purposes only and are subject to change without notice. Please consult a Sales Representative for more information. E&OE.

 TERA |  Macdonald
PLATINUM MARKETING